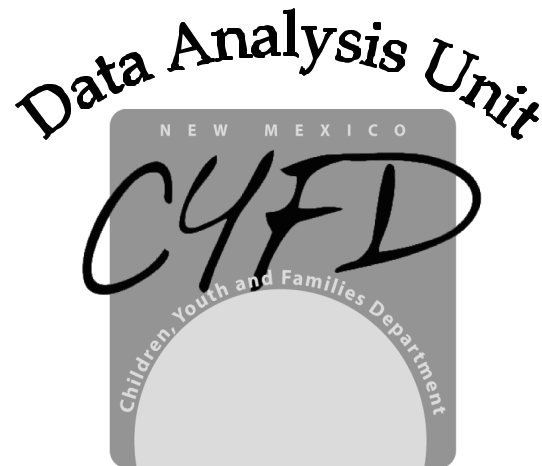


New Mexico

Juvenile Justice Services

Fact Book



**First Quarter, Fiscal Year 2011
Preliminary**

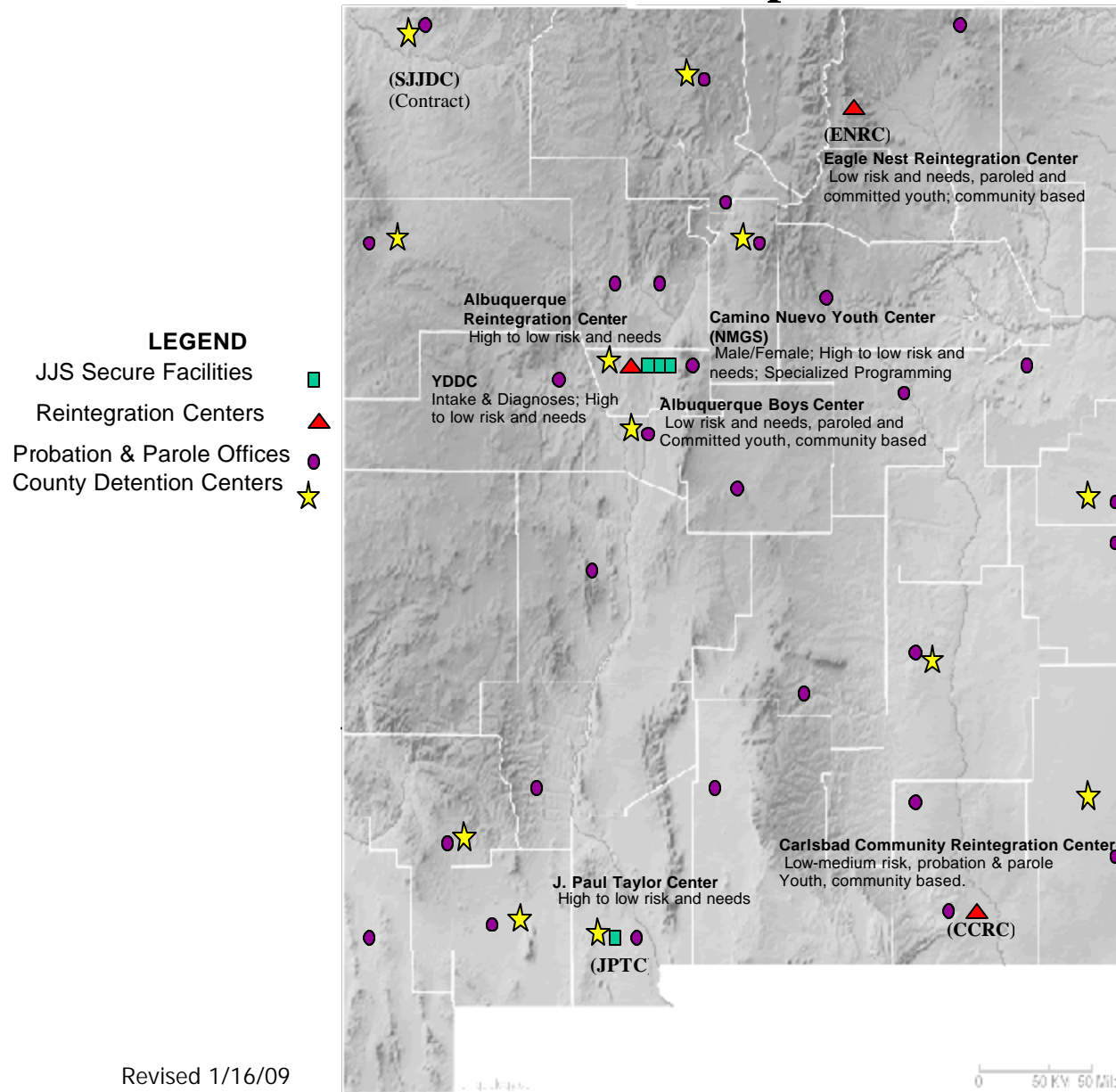
Table of Contents

JJS FACILITIES AND DESCRIPTIONS.....	4
MONTHLY REFERRAL PROJECTIONS.....	5
REFERRALS BY ETHNICITY, BY COUNTY.....	6
REFERRALS BY AGE AND SEX, BY COUNTY.....	7
REFERRALS BY TYPE, BY REGION	8
FIRST TIME REFERRALS – DELINQUENT REFERRAL TYPE	9
FIRST TIME REFERRALS – NON DELINQUENT REFERRAL TYPE	10
JPPO PRELIMINARY INQUIRY DECISIONS.....	11
SEX OFFENSE COUNT AND PERCENT, BY COUNTY	12
OFFENSES REFERRED BY DEGREE, BY DISTRICT AND MOST SERIOUS SDM, BY COUNTY.....	13
OFFENSES REFERRED BY GENDER, BY REGION	14
FORMAL COURT DISPOSITIONS, BY ETHNICITY, AND BY GENDER	15
FORMAL COURT DISPOSITIONS, BY AGE, AND BY LENGTH OF COMMITMENT.....	16
CASE PROCESSING TIME - DISPOSITION TYPE AND FINDING OF DELINQUENCY OR NOT, BY AVERAGE DAYS	17
CASE PROCESSING TIME - TOP 15 OFFENSES, BY AVERAGE DAYS.....	18
CASE PROCESSING TIME – PETITION TYPE, BY AVERAGE DAYS	19
MONTHLY FIELD SUPERVISION BY TYPE.....	20
PAROLE AND PROBATION CASES BY SUPERVISION LEVEL (SNAPSHOT ON THE LAST DAY OF THE QUARTER).....	21
PRE-DISPOSITION CASES FOR PRIMARY ASSIGNMENTS, BY ETHNICITY, BY COUNTY (SNAPSHOT ON THE LAST DAY OF THE QUARTER).....	22
PRE-DISPOSITION CASES FOR PRIMARY ASSIGNMENT, BY GENDER, BY REGION	23
RAI SCORE LEVEL AND GENDER – DETAINED	24
RAI SCORE LEVEL AND GENDER – RELEASED WITH CONDITIONS	25
RAI SCORE LEVEL AND GENDER – RELEASED.....	26
FY11 Q1 DETENTIONS BY ETHNICITY	27

FY11 Q1 DETENTIONS BY GENDER	28
FY11 Q1 OVERRIDES BYREASON	29
ADMISSIONS AND RELEASES BY CENTER AND REGION.....	30
AVERAGE LENGTH OF STAY AND DAILY POPULATION BY CENTER AND REGION	31
AVERAGE JJS SECURE FACILITY POPULATION	32
AVERAGE REINTEGRATION CENTER POPULATION	33
MONTHLY FACILITY ADMISSION PROJECTIONS	34
FACILITY POPULATION, BY LOW RISK LEVEL ON SPECIFIED DATE	35
FACILITY POPULATION, BY MEDIUM RISK LEVEL ON SPECIFIED DATE	36
FACILITY POPULATION, BY HIGH RISK LEVEL ON SPECIFIED DATE	37
FACILITY POPULATION, BY LOW NEEDS LEVEL ON SPECIFIED DATE.....	38
FACILITY POPULATION, BY MODERATE NEEDS LEVEL ON SPECIFIED DATE.....	39
FACILITY POPULATION, BY HIGH NEEDS LEVEL ON SPECIFIED DATE.....	40
FACILITY POPULATION, BY COMMITMENT LENGTH (UP TO 15 DAYS) ON SPECIFIED DATE.....	41
FACILITY POPULATION, BY COMMITMENT LENGTH (UP TO 1 YEAR) ON SPECIFIED DATE	42
FACILITY POPULATION, BY COMMITMENT LENGTH (UP TO 2 YEARS) ON SPECIFIED DATE	43
FACILITY POPULATION, BY COMMITMENT LENGTH (UP TO AGE 21) ON SPECIFIED DATE	44
ADMISSIONS & DISCHARGES, BY COMMITMENT TYPE AND ETHNICITY	45
DISCIPLINARY INCIDENT REPORTS BY MONTH & DAY OF THE WEEK, FY11 Q1	46
INCIDENTS INVOLVING CLIENT RESTRAINT, FY11 Q1.....	47

Disclaimer – The charts and graphs in this book do not contain the official counts for the quarter. The numbers will change up to the official date, as new data is input into FACTS. Many of the counts in the charts came from pivot tables run on 11/15/2010.

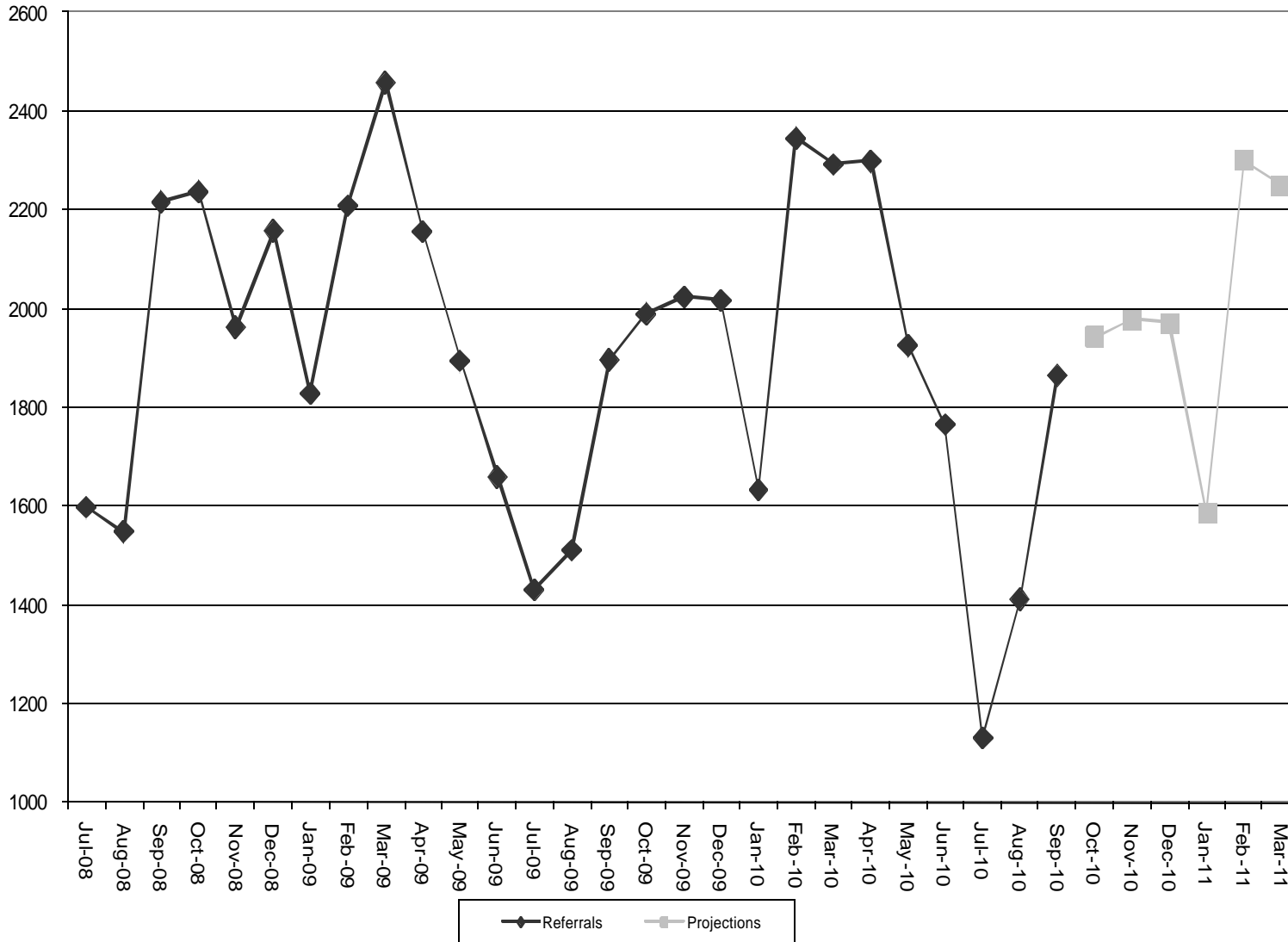
JJS Facilities and Descriptions



Source: JJS Facilities and Descriptions on Map

Monthly Referral Projections

JJS Referrals - Historical & 6 Month Projection



Time Period	Referrals	Projections
July-08	1596	
August-08	1547	
September-08	2216	
October-08	2237	
November-08	1962	
December-08	2157	
January-09	1827	
February-09	2208	
March-09	2458	
April-09	2156	
May-09	1893	
June-09	1658	
July-09	1429	
August-09	1510	
September-09	1895	
October-09	1989	
November-09	2023	
December-09	2016	
January-10	1632	
February-10	2345	
March-10	2292	
April-10	2298	
May-10	1924	
June-10	1765	
July-10	1129	
August-10	1410	
September-10	1864	
October-10		1942
November-10		1976
December-10		1970
January-11		1586
February-11		2300
March-11		2247

Source: FY05-11 Referrals

Referrals by Ethnicity, by County

Referrals by Ethnicity FY11 Q1								
County	2 or more	AI or AN	Asian	B or AA	Hispanic	NH or PI	White	Total
Rio Arriba	1				92		10	109
Los Alamos					10		15	25
Santa Fe	1	1		3	195	1	35	236
Bernalillo	29	38	4	31	715		268	1117
Dona Ana	2	1		7	548	1	101	666
Guadalupe					21		6	28
Mora					11			11
San Miguel					78		4	82
Lea	1	2		22	122		40	187
Grant	1				73		12	87
Hidalgo					8		5	13
Luna				1	58		4	63
Sierra					16		17	35
Socorro		2		1	38		6	49
Catron								0
Torrance		1			7		7	16
Colfax					15		10	25
Union					10		8	18
Taos		5			38		18	61
Curry	2			18	113		44	179
Roosevelt					40		17	57
Quay	1			3	28		14	47
De Baca					3			3
Harding								0
McKinley	1	80		2	36		5	124
San Juan	5	70			59		53	191
Lincoln		4			25		20	49
Otero	1		2	8	71		51	134
Cibola	1	6		2	22		4	40
Sandoval	6	13	2	9	110	1	87	229
Valencia	2	1			90		37	130
Chaves	2			8	195		52	257
Eddy		1		2	83		45	134
Total	56	225	8	117	2930	3	995	4402

AI or AN - American Indian or Alaskan Native, B or AA - Black or African American, NH or PI - Native Hawaiian or other Pacific Islander

From FY10 Q4 to FY11 Q1 there were no groups to have an increase in their referral numbers.

Source: FY11 Referrals

Referrals by Age and Sex, by County

Referrals by Age (10-17) FY11 Q1									
County	10	11	12	13	14	15	16	17	Total
Rio Arriba			9	12	14	28	17	29	109
Los Alamos				1	4	2	7	11	25
Santa Fe	2	4	6	12	31	54	46	79	236
Bernalillo	9	20	54	101	119	187	264	323	1117
Dona Ana	1	15	29	58	86	168	142	152	666
Guadalupe		1	1	4	1	2	8	11	28
Mora				1	3	1	3	3	11
San Miguel	2	1	1	2	12	13	23	27	82
Lea	1	3	12	26	28	31	40	46	187
Grant			3	7	13	11	27	24	87
Hidalgo	1				2	2	5	3	13
Luna	1	2	2	7	8	15	9	16	63
Sierra				3	4	4	8	16	35
Socorro		3	2	3	6	12	11	10	49
Catron									0
Torrance	1				2	6	1	4	16
Colfax	2	2		1	6	7	4	3	25
Union			1	1	4	4	4	2	18
Taos		2	7	6	9	6	19	12	61
Curry		2	10	23	24	26	43	45	179
Roosevelt	1		11	12	5	11	9	8	57
Quay		1	2	2	5	14	12	10	47
De Baca				2			1		3
Harding									0
McKinley		3	2	19	20	24	24	31	124
San Juan	5	6	14	25	18	27	50	41	191
Lincoln	2		1	1	6	11	7	20	49
Otero	1	4	4	9	16	35	32	29	134
Cibola				5	5	9	11	10	40
Sandoval	3	3	6	24	25	46	53	61	229
Valencia			5	15	20	26	23	40	130
Chaves	2	3	7	29	35	41	66	73	257
Eddy	1	4	7	15	20	29	28	28	134
Total	35	79	196	426	551	852	997	1167	4402

Referrals by Sex FY11 Q1			
County	Female	Male	Total
Rio Arriba	40	68	109
Los Alamos	6	19	25
Santa Fe	71	162	236
Bernalillo	365	749	1117
Dona Ana	206	457	666
Guadalupe	13	14	28
Mora	2	9	11
San Miguel	25	57	82
Lea	74	112	187
Grant	32	54	87
Hidalgo	2	11	13
Luna	15	48	63
Sierra	12	23	35
Socorro	21	28	49
Catron			0
Torrance	2	14	16
Colfax	2	23	25
Union	6	12	18
Taos	21	40	61
Curry	50	129	179
Roosevelt	20	37	57
Quay	8	39	47
De Baca	1	2	3
Harding			0
McKinley	45	79	124
San Juan	75	116	191
Lincoln	15	34	49
Otero	36	96	134
Cibola	13	27	40
Sandoval	56	173	229
Valencia	31	99	130
Chaves	95	161	257
Eddy	45	89	134
Total	1405	2981	4402

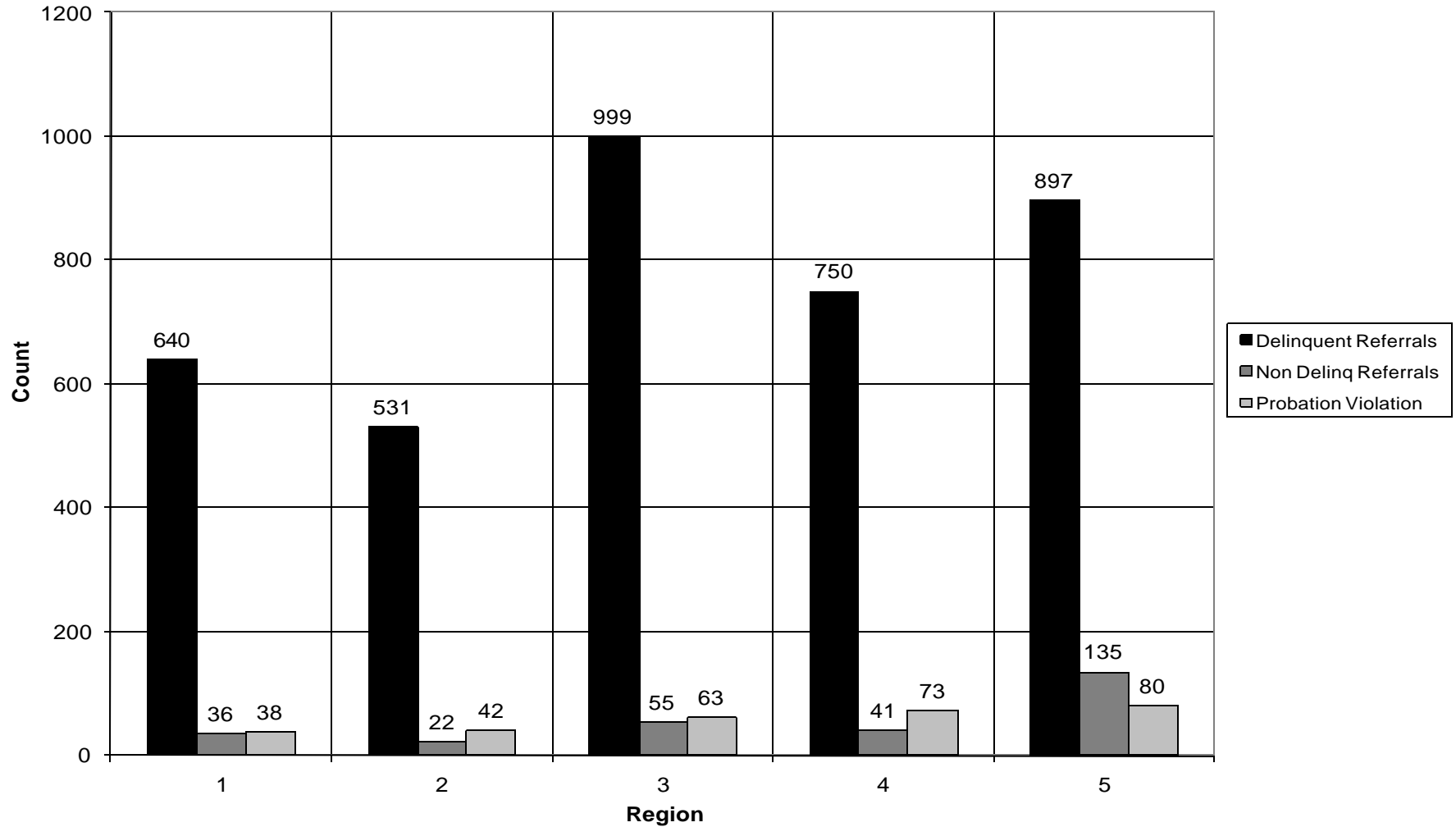
¹From the FY10 Q4 to FY11 Q1 the total number of referrals for males and females decreased by 974 and 583 respectively.

Source: FY11 Referrals

¹ Note: In the table on the right the sum of male and female clients may not equal the total because referral counts for clients with an unknown gender were excluded. These referrals accounted for less than 1% of the total. In the table entitled "Referrals by age (10-17) FY11 Q1" referral counts were excluded for clients whose age was less than 10 or greater than 17. However, the totals include the counts for all age groups.

Referrals by Type, by Region

Referrals by Type FY11 Q1



Across all regions, delinquent referrals made up approximately 86.7%, non-delinquent referrals 6.6%, and probation violations 6.7% of the total number of referrals received during this quarter.

Source: FY11 Referrals

First Time Referrals – Delinquent Referral Type

First Referrals by Region, District, and County - Delinquent Referrals Only					
Region	DISTRICT	COUNTY	N	Y	First Referral %
1	11	McKinley	52	64	55%
		San Juan	64	94	59%
	11 Total		116	158	58%
	13	Cibola	13	16	55%
		Sandoval	121	98	45%
Valencia		72	46	39%	
13 Total		206	160	44%	
1 Total			322	318	50%
2	1	Los Alamos	6	18	75%
		Rio Arriba	50	40	44%
		Santa Fe	103	111	52%
	1 Total		159	169	52%
	4	Guadalupe	12	14	54%
		Mora	6	5	45%
		San Miguel	43	30	41%
	4 Total		61	49	45%
8	Colfax	12	12	50%	
	Taos	23	31	57%	
	Union	8	7	47%	
8 Total		43	50	54%	
2 Total			263	268	50%
3	2	Bernalillo	521	478	48%
	2 Total		521	478	48%
3 Total			521	478	48%
4	5	Lea	81	60	43%
	5 Total		81	60	43%
	9	Curry	94	60	39%
		Roosevelt	21	34	62%
	9 Total		115	94	45%
	10	DeBaca	0	3	100%
		Quay	13	30	70%
10 Total		13	33	72%	
14	Chaves	139	101	42%	
	Eddy	56	58	51%	
14 Total		195	159	45%	
4 Total			404	346	46%
5	3	Dona Ana	323	182	36%
	3 Total		323	182	36%
	6	Grant	49	30	38%
		Hidalgo	8	4	33%
		Luna	30	28	48%
	6 Total		87	62	42%
	7	Sierra	16	9	36%
		Socorro	23	18	44%
Torrance		6	4	40%	
7 Total		45	31	41%	
12	Lincoln	18	27	60%	
	Otero	72	50	41%	
12 Total		90	77	46%	
5 Total			545	352	39%
Total			2055	1762	46%

Source: FY11 Referrals

First Time Referrals – Non Delinquent Referral Type

First Referrals by Region, District, and County - Non Delinquent Referrals Only					
Region	DISTRICT	COUNTY	N	Y	First Referral %
1	11	McKinley	2	4	67%
		San Juan	8	6	43%
	11 Total		10	10	50%
	13	Cibola	3	3	50%
		Sandoval Valencia	0 3	1 6	100% 67%
13 Total		6	10	63%	
1 Total			16	20	56%
2	1	Los Alamos	0	1	100%
		Rio Arriba	5	7	58%
		Santa Fe	1	1	50%
	1 Total		6	9	60%
	4	San Miguel	4	1	20%
4 Total		4	1	20%	
8	Taos	1	1	50%	
8 Total		1	1	50%	
2 Total			11	11	50%
3	2	Bernalillo	25	30	55%
	2 Total		25	30	55%
3 Total			25	30	55%
4	5	Lea	25	11	31%
		5 Total		25	11
	14	Chaves	1	0	0%
		Eddy	1	3	75%
14 Total		2	3	60%	
4 Total			27	14	34%
5	3	Dona Ana	75	37	33%
		3 Total		75	37
	6	Grant	2	2	50%
		6 Total		2	2
	7	Sierra	5	3	38%
		Socorro Torrance	0 1	2 1	100% 50%
	7 Total		6	6	50%
12	Lincoln	1	1	50%	
	Otero	3	2	40%	
12 Total		4	3	43%	
5 Total			87	48	36%
Total			166	123	43%

Source: FY11 Referrals

JPPO Preliminary Inquiry Decisions

JPPO Decision by County FY11 Q1				
Referral County	Handle Informally		Refer to CCA	
	#	%	#	%
Rio Arriba	41	36%	72	64%
Los Alamos	17	77%	5	23%
Santa Fe	120	56%	96	44%
Bernalillo	982	62%	610	38%
Dona Ana	481	70%	211	30%
Guadalupe	18	67%	9	33%
Mora	5	50%	5	50%
San Miguel	41	53%	37	47%
Lea	80	47%	91	53%
Grant	28	44%	36	56%
Hidalgo	7	50%	7	50%
Luna	37	65%	20	35%
Sierra	25	57%	19	43%
Catron	7	78%	2	22%
Socorro	32	64%	18	36%
Torrance	16	57%	12	43%
Colfax	6	25%	18	75%
Union	3	30%	7	70%
Taos	21	42%	29	58%
Curry	84	47%	93	53%
Roosevelt	25	54%	21	46%
Quay	27	57%	20	43%
De Baca	3	38%	5	63%
Harding	0	0%	0	0%
McKinley	100	80%	25	20%
San Juan	153	68%	71	32%
Lincoln	27	66%	14	34%
Otero	77	61%	50	39%
Cibola	17	55%	14	45%
Sandoval	154	58%	113	42%
Valencia	88	49%	90	51%
Chaves	160	61%	104	39%
Eddy	60	50%	60	50%
Total	2942	60%	1984	40%

From FY10 Q4 to FY11 Q1 the number of informal and formal decisions decreased by less than 19.9% and 17.6% respectively.

Source: FY11 JPPO PI Decisions

Sex Offense Count and Percent, by County

Sex Offenses by County FY11 Q1			
County	No	Yes	% of So's
Rio Arriba	188		
Los Alamos	32		
Santa Fe	376		
Bernalillo	1725	21	1.2%
Dona Ana	1083	5	0.5%
Guadalupe	74		
Mora	16		
San Miguel	122		
Lea	213	4	1.8%
Grant	135		
Hidalgo	30		
Luna	98		
Sierra	54		
Socorro	72	1	1.4%
Catron			
Torrance	31		
Colfax	61		
Union	27		
Taos	99		
Curry	312	2	0.6%
Roosevelt	82		
Quay	157		
DeBaca	3		
Harding			
McKinley	182	1	0.5%
San Juan	286	3	1.0%
Lincoln	78		
Otero	224		
Cibola	66		
Sandoval	335	1	0.3%
Valencia	202		
Chaves	388	2	0.5%
Eddy	241	4	1.6%
Total	6992	44	0.6%

The total number of sex offenses statewide reported in FY10 Q1 was 23.

Source: FY11 Charges

Offenses Referred by Degree, by District and Most Serious SDM, by County

Offenses by Degree FY11 Q1						
District	City Ordinance	Felony	Misdemeanor	Probation Violation	Status Offense	Total
1		109	398	72	17	596
2	65	417	1074	172	18	1746
3		133	633	150	172	1088
4	1	34	130	42	5	212
5		31	138	12	36	217
6	2	55	173	29	4	263
7		19	94	33	12	158
8		43	112	30	2	187
9		32	280	84		396
10		83	55	22		160
11	2	67	315	68	20	472
12	2	63	214	16	7	302
13	6	129	406	48	15	604
14	3	57	426	144	5	635
Total	81	1272	4448	922	313	7036

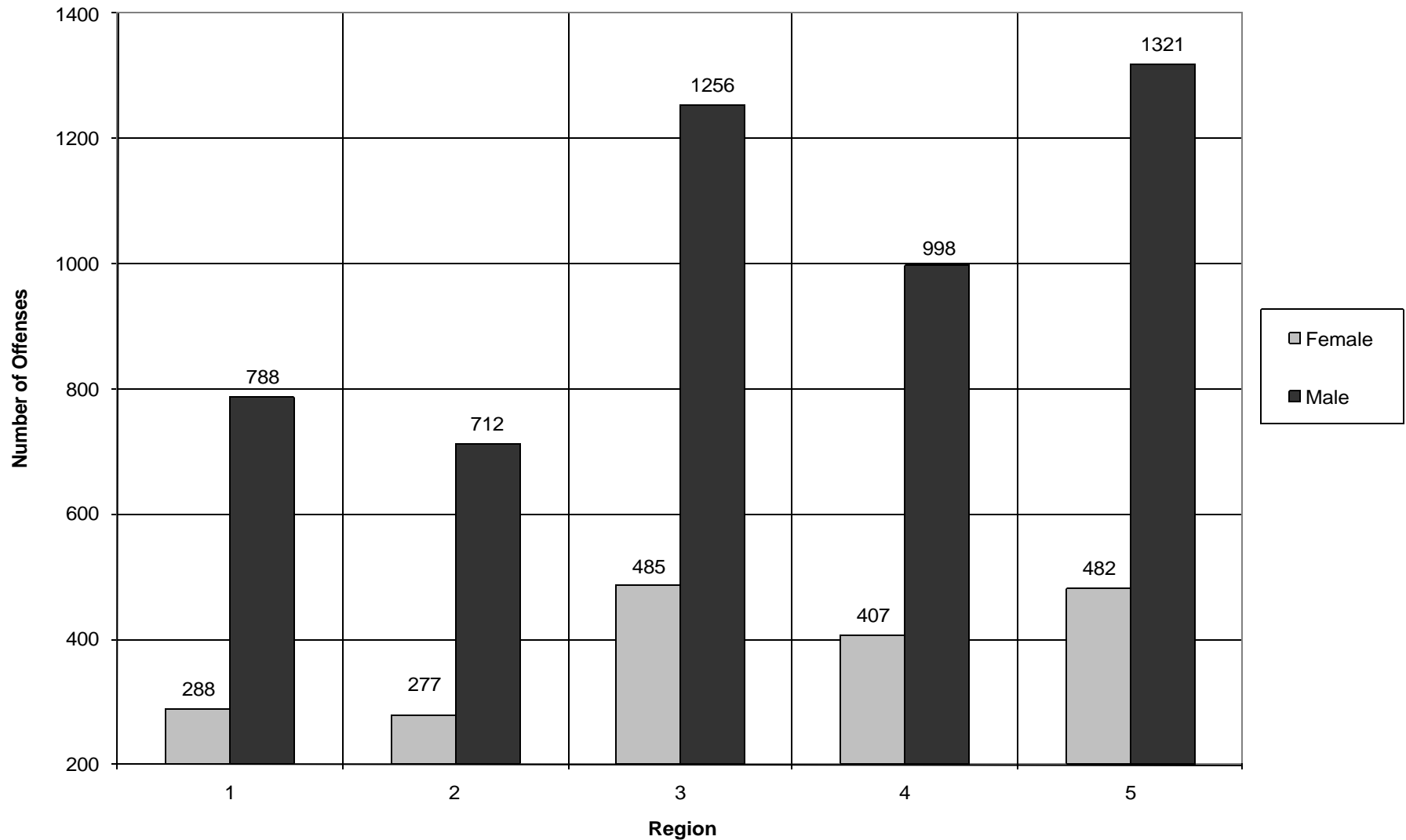
Offenses by Most Serious SDM Category FY11 Q1						
County	Assaultive	Drugs	Other	Property	Weapon	Total
Rio Arriba	49	34	64	37	4	188
Los Alamos	3	16	2	11		32
Santa Fe	68	89	93	120	6	376
Bernalillo	395	277	527	516	31	1746
Dona Ana	214	202	427	212	33	1088
Guadalupe	4	4	41	25		74
Mora	3	6	5	2		16
San Miguel	21	47	25	28	1	122
Lea	62	39	70	45	1	217
Grant	29	50	25	26	5	135
Hidalgo	1	8	8	12	1	30
Luna	10	23	23	42		98
Sierra	7	15	27	5		54
Socorro	11	13	21	28		73
Catron						0
Torrance	2	9	17	3		31
Colfax		8	17	35	1	61
Union	7	9	7	4		27
Taos	24	29	26	20		99
Curry	45	46	132	84	7	314
Roosevelt	42	9	20	10	1	82
Quay	7	6	39	105		157
DeBaca	3					3
Harding						0
McKinley	42	42	49	48	2	183
San Juan	42	37	107	98	5	289
Lincoln	15	21	16	26		78
Otero	43	45	42	92	2	224
Cibola	5	15	31	11	4	66
Sandoval	73	91	65	93	14	336
Valencia	39	59	43	57	4	202
Chaves	76	79	148	83	4	390
Eddy	64	51	89	37	4	245
Total	1406	1379	2206	1915	130	7036

The “Offenses by Degree FY11 Q1” table shows that district 2 had the highest number of referred offenses in each category except for Status Offenses.

Source: FY11 Charges

Offenses Referred by Gender, by Region

Offenses by Gender FY11 Q1



²Across all regions, males made up approximately 72.1% and females 27.6% of the total number of referred offenses during this quarter.

Source: FY11 Charges

² Above graph does not include counts for referred offenses when the individual's gender was unknown. The unknown gender category accounted for less than one percent of the total.

Formal Court Dispositions, by Ethnicity, and by Gender

Disposition Type by Gender FY11 Q1			
Disposition	Female	Male	Total
Adult Sanctions - Jail		8	8
Consent Decree	99	389	490
Dismissed	33	152	185
Judgment - CYFD Commitment	8	57	65
Judgment - Detention	7	28	35
Judgment - Probation	71	266	337
New Disposition	1	10	11
Nolle Prosequi or Time Expired	18	79	97
Remain in Commitment		3	3
Time Waiver	48	126	174
YO Judgment - CYFD Commitment		1	1
YO Judgment - Probation		1	1
Total	285	1120	1407

³Of all dispositions, the most common for females and males was Consent Decree. This disposition accounted for 34.7% of female dispositions and male dispositions.

Disposition Type by Ethnicity							
Disposition	2 or more	AI or AN	B or AA	Hispanic	Asian	White	Total
Adult Sanctions - Jail			1	7			8
Consent Decree	5	16	16	346	2	99	490
Dismissed	2	9	4	137	1	32	185
Judgment - CYFD Commitment	1	7	2	45	1	9	65
Judgment - Detention		1	2	23	1	8	35
Judgment - Probation	6	21	9	235		66	337
New Disposition		1		4		6	11
Nolle Prosequi or Time Expired	2	12	2	59	1	20	97
Remain in Commitment				3			3
Time Waiver	3	4	4	125		35	174
YO Judgment - CYFD Commitment				1			1
YO Judgment - Probation				1			1
Total	19	71	40	986	6	275	1407

⁴In the chart entitled “Disposition Type by Ethnicity,” there were more dispositions for Hispanics than all other ethnicities combined.

AI or AN - American Indian or Alaskan Native, B or AA - Black or African American, NH or PI - Native Hawaiian or other Pacific Islander

Source: FY11 – Formal Dispositions

³ Note that the counts for males and females, when added together, may not sum to the total. This is because dispositions for individuals with missing genders are never included in the chart.

⁴ The counts may not sum to the total because dispositions for individuals with missing ethnicities were not included in the chart. They account for approximately 0.7% of the total.

Formal Court Dispositions, by Age, and by Length of Commitment

Disposition by Age (10-17) FY11 Q1									
Disposition	10	11	12	13	14	15	16	17	Total
Adult Sanctions - Jail								2	8
Consent Decree	1		9	35	47	91	133	132	490
Dismissed	1	1	2	10	17	32	41	50	185
Judgment - CYFD Commitment					3	6	17	28	65
Judgment - Detention				1			3	6	35
Judgment - Probation		1	1	7	18	64	103	118	337
New Disposition					1	2	3	5	11
Nolle Prosequi or Time Expired		1	1	6	6	6	15	25	97
Remain in Commitment								2	3
Time Waiver		2	5	12	26	29	40	43	174
YO Judgment - CYFD Commitment									1
YO Judgment - Probation						1			1
Total	2	5	18	71	118	231	355	411	1407

⁵Juveniles age 15, 16, and 17 had the most dispositions by age for this quarter. Clients in this age range accounted for 70.9% of the total number of dispositions.

Disposition Type by Length					
Disposition	Up To 15 Days	Up to 6 Months	Up to 1 Yr.	Up to 2 Yrs.	Up to age 21
Adult Sanctions - Jail					
Consent Decree		292	197	1	
Dismissed					
Judgment - CYFD Commitment	1		42	21	1
Judgment - Detention	35				
Judgment - Probation		12	169	154	2
New Disposition					
Nolle Prosequi or Time Expired					
Remain in Commitment					
Time Waiver					
YO Judgment - CYFD Commitment					1
YO Judgment - Probation				1	
Grand Total	36	304	408	177	4

Across all the dispositions issued in FY11 Q1, the most common disposition length was up to one year. 43.9% of the dispositions have a length of one year.

Source: FY11 – Formal Dispositions

⁵ Note: Dispositions for clients whose age was recorded as less than 10 or greater than 17 are excluded from the counts. Therefore, rows may not sum to total.

Case Processing Time - Disposition Type and Finding of Delinquency or Not, by Average Days

Disposition Type by Average Days FY11 Q1				
Disposition	Avg Days Inc To Ref	Avg Days Ref to JPPO Dec	Avg Days JPPO Dec to Filed	Avg Days Filed to Disp
Adult Sanctions - Jail	32	1	18	137
Consent Decree	16	13	24	69
Dismissed	21	12	23	134
Judgment - CYFD Commitment	21	6	15	98
Judgment - Detention	40	6	122	112
Judgment - Probation	39	5	13	75
New Disposition	13	6	14	90
Nolle Prosequi or Time Expired	40	14	34	322
Remain in Commitment	11			522
Time Waiver	13	24	35	87
YO Judgment - CYFD Commitment	9	4	205	
Overall Average	25	11	24	98

Finding of Delinquency or Not by Average Days FY11 Q1				
Charge Disp	Avg Days Inc To Ref	Avg Days Ref to JPPO Dec	Avg Days JPPO Dec to Filed	Avg Days Filed to Disp
Dismissed	25	10	22	127
Admitted	29	11	27	70
No Contest	22	5	15	55
Pending	14	21	34	84
Found to Have Committed	4	10	9	185
Found to Have Not Committed	4	7	4	109
Overall Average	25	11	24	98

Avg Days Inc Ref – Average number of days from the incident to the referral.
 Avg Days Ref to JPPO Dec – Average number of days from the referral to the JPPO decision.
 Avg Days JPPO Dec to Filed – Average number of days from the JPPO decision to when the petition is filed.
 Avg Days Filed to Disp – Average number of days from the petition being filed to the disposition.

Case Processing Time - Top 15 Offenses, by Average Days

Top 15 Offenses by Average Days FY11 Q1				
Offense	Avg Days Inc To Ref	Avg Days Ref to JPPO Dec	Avg Days JPPO Dec to Filed	Avg Days Filed to Disp
Probation Violation - Alcohol/Drugs	38	1	16	60
Probation Violation - Residence	27	1	31	61
Use or Possession of Drug Paraphernalia	8	13	26	82
Battery	37	19	35	130
Shoplifting (\$250 or less)	11	26	36	115
Possession of Marijuana (One Ounce or Less) (1st Offense)	10	16	28	101
Criminal Damage to Property	25	13	31	104
Probation Violation - Special Condition	45	1	28	73
Probation Violation - Curfew	19	4	11	66
Probation Violation - Reporting	45		16	68
Battery (Household Member)	10	8	14	61
Possession of Alcoholic Beverages by a Minor	11	19	25	90
Probation Violation - General Behavior (Law)	12	3	14	57
Resisting, Evading or Obstructing an Officer	6	9	23	143
Larceny (\$250 or less)	17	13	29	94
Overall Average	23	9	24	85

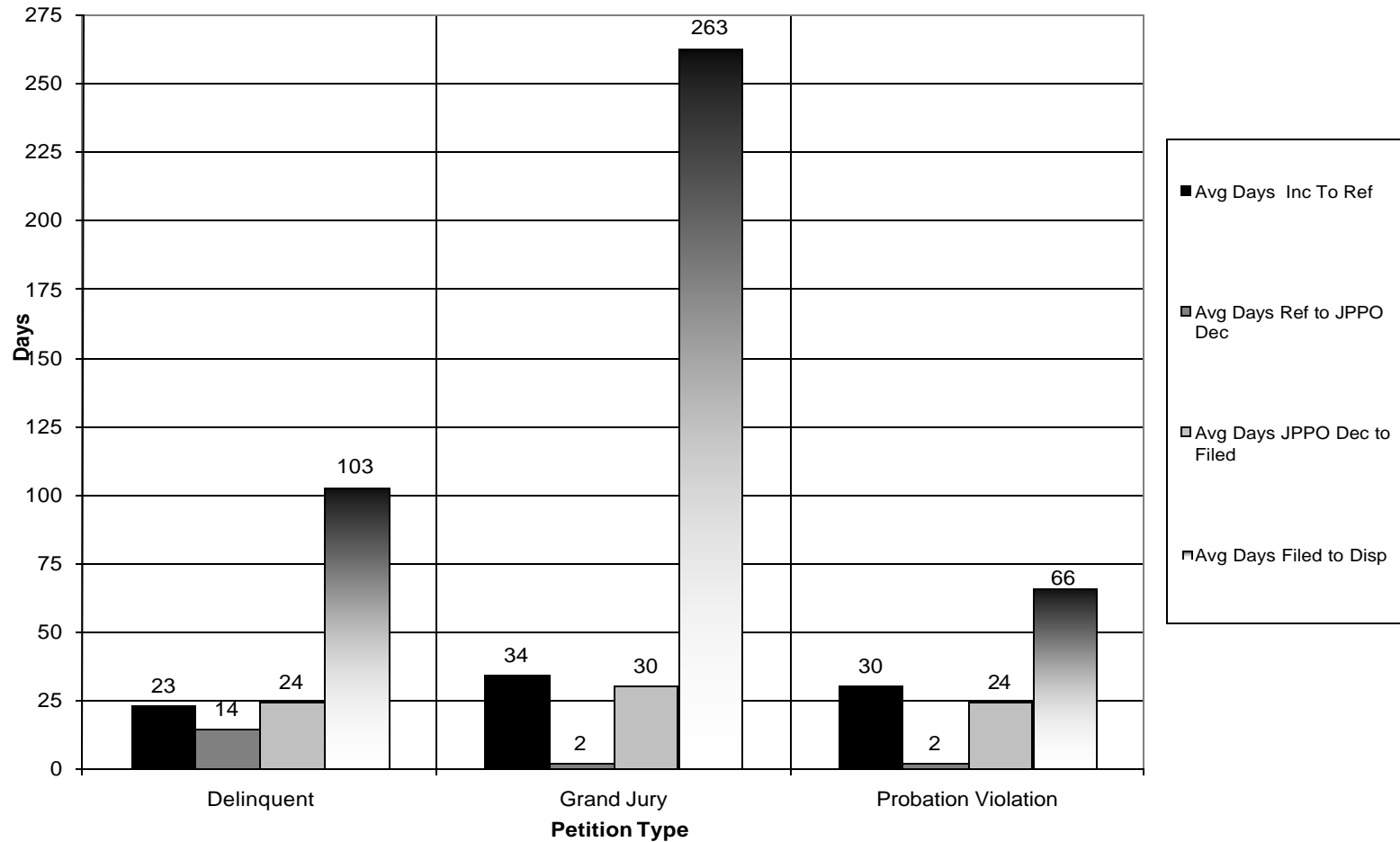
From the time the incident occurred to the date of disposition, on average, an individual charged with Battery had to wait the longest amount of time while someone charged with Probation Violation – General Behavior (Law) had to wait the shortest. On average, it took 135 more days to get through the major decision points for someone charged with Battery rather than Probation Violation – General Behavior (Law).

Note: The counts in the table above only include those cases in which a formal disposition occurred.

Avg Days Inc Ref – Average number of days from the incident to the referral.
 Avg Days Ref to JPPO Dec – Average number of days from the referral to the JPPO decision.
 Avg Days JPPO Dec to Filed – Average number of days from the JPPO decision to when the petition is filed.
 Avg Days Filed to Disp – Average number of days from the petition being filed to the disposition.

Case Processing Time – Petition Type, by Average Days

Petition Type by Average Days FY11 Q1



Note: The counts in the graph only include those cases in which a formal disposition occurred.

Source: FY11 Disp Charges-Case Processing

Avg Days Inc Ref – Average number of days from the incident to the referral.
 Avg Days Ref to JPPO Dec – Average number of days from the referral to the JPPO decision.
 Avg Days JPPO Dec to Filed – Average number of days from the JPPO decision to when the petition is filed.
 Avg Days Filed to Disp – Average number of days from the petition being filed to the disposition.

Monthly Field Supervision by Type

Field Supervision by Type (Last Day of the Month)													
	Sept, 09	Oct, 09	Nov, 09	Dec, 09	Jan, 10	Feb, 10	Mar, 10	Apr, 10	May, 10	Jun, 10	Jul, 10	Aug, 10	Sept, 10
Conditional Release	180	172	181	199	170	189	192	190	189	192	171	164	163
Interstate Compact Parole	9	9	9	9	11	12	10	8	7	5	3	3	3
Interstate Compact Probation	48	50	61	59	62	64	62	56	56	50	51	50	50
Informal Conditions	656	736	833	815	736	827	983	1000	921	833	613	582	599
Informal Supervision	156	157	175	177	158	166	176	203	164	120	121	115	109
Parole	34	29	50	49	48	53	49	52	54	51	41	45	48
Probation Male	1744	1682	1706	1673	1601	1602	1659	1653	1654	1678	1636	1682	1685
Probation Female	479	471	482	463	450	438	441	467	446	455	432	426	407
Time Waiver	420	392	406	400	382	367	364	367	356	324	315	312	282
Total Count Supervision Type	3736	3698	3903	3844	3618	3718	3936	4005	3859	3718	3392	3389	3356

Source: JJS Desktop Report

Probation – JPPO will supervise a client found to have committed a delinquent offense and ordered supervision by the court. The client may be supervised several times a day down to once a month. The court order may be a consent decree, judgment or Youthful Offender.

Interstate Compact Probation – Interstate agreement in which a probation client from another state is supervised by one of our JPPO officers.

Time Waiver – An agreement between the public defender and the District Attorney’s Office that the client will not incur another referral for six months. The JPPO monitors any conditions associated with the agreement.

Conditional Release – JPPO supervises and monitors court-ordered conditions for a client who has been released from detention.

Informal Supervision – JPPO supervises a client handled informally through contact with the client at least once each month. This client is more at risk of re-offending than a client on informal conditions and needs additional supervision.

Informal Conditions – JPPO monitors progress of conditions a client handled informally who is required to complete specific tasks given by the JPPO.

Parole – Supervision by JPPOs for clients that have been paroled from a juvenile facility by the Juvenile Parole Board.

Interstate Compact Parole – Interstate agreement in which a parole client from another state is supervised by one of our JPPO offices.

Pre-Parole Release – Client is released from a facility on a “furlough” or pass.

Parole After Discharge – 90 day mandatory parole after client has completed their commitment.

Interstate Compact Parole – Interstate agreement in which a parole client from another state is supervised by one of our JPPO offices.

Parole and Probation Cases by Supervision Level (Snapshot on the Last Day of the Quarter)

Parole and Probation Cases by Supervision Level									
County	ICJ Out	Inactive	Intensive	Maximum	Medium	Minimum	Monitoring	Warrant	Total
RIO ARRIBA	2		9	22	14	6	3	5	61
SANTA FE	5	2	16	38	44	16		12	133
BERNALILLO	74	54	103	358	332	159	50	85	1215
DONA ANA	8	20	35	75	209	88	4	17	456
GUADALUPE				6	6	4		1	17
SAN MIGUEL	1		1	20	29	22		2	75
LEA	3	1	3	20	41	26	11	8	113
GRANT			4	11	20	4			39
HIDALGO	2	13	4	1	8	2			30
LUNA	1	2	4	8	26	18	8	3	70
SIERRA									0
SOCORRO	1		9	24	28	7	3	5	77
TORRANCE			2	7	23	3		1	36
COLFAX	1		1	13	8	8	9		40
UNION			1	5	3			1	10
TAOS	1		6	16	22	11		8	64
CURRY	5	9	9	42	67	36	6	17	191
ROOSEVELT				2	14	8	3	2	29
QUAY			7	10	11	6		3	37
MCKINLEY	1		4	8	12	11	2	2	40
SAN JUAN	6	6	25	52	68	43	16	11	227
LINCOLN	2		6	7	13	10		2	40
OTERO	6	1	29	62	60	26	18	4	206
CIBOLA		7	5	12	15	15	4	10	68
SANDOVAL	1	11	7	28	70	11	3	3	134
VALENCIA	2	17	1	13	39	16		3	91
CHAVES	2	4	6	25	38	25	1	7	108
EDDY	4		34	93	42	51	5	15	244
Total	128	147	331	978	1262	632	146	227	3851

⁶For each supervision level listed, Bernalillo County had the most parole and probation cases. Across all supervision levels, Bernalillo County had 31.6% of all the clients who were on parole or probation statewide on the last day of the 1st quarter of fiscal year 2011.

Source: CbyW 09-30-10 Extract 1

⁶ The chart includes clients whose status is ICJ Parole, Parole, ICJ Probation, Probation Courtesy, or Probation.

Pre-Disposition Cases for Primary Assignments, by Ethnicity, by County (Snapshot on the Last Day of the Quarter)

JJD Pre-Disposition Cases for Primary Assignments								
County	2 or more	AI or AN	Asian	B or AA	Hispanic	NH or PI	White	Total
RIO ARRIBA	1	1			44		7	58
SANTA FE	2				77	1	33	116
BERNALILLO	21	43	3	37	686		219	1060
DONA ANA	3			3	390		68	470
GUADALUPE					7		1	9
SAN MIGUEL					35		3	38
LEA	1			16	104		31	159
GRANT					29		4	35
HIDALGO		1			4			5
LUNA					7		2	9
SIERRA								0
SOCORRO	1	1			32		19	59
TORRANCE					8		7	15
COLFAX					13		7	20
UNION					3		4	7
TAOS		1			33		11	46
CURRY	2	1		7	84		29	125
ROOSEVELT					16		14	30
QUAY	1				13		8	23
MCKINLEY	2	45		1	22		1	75
SAN JUAN	2	47		1	30		32	121
LINCOLN		2			5		5	12
OTERO				4	31		14	51
CIBOLA		6			8		4	21
SANDOVAL	2	12	1	7	60	1	48	132
VALENCIA	2	2		4	171		46	228
CHAVES	1			1	45		10	57
EDDY				2	31		29	65
Total	41	162	4	83	1988	2	656	3046
AI or AN - American Indian or Alaskan Native, B or AA - Black or African American, NH or PI - Native Hawaiian or other Pacific Islander								

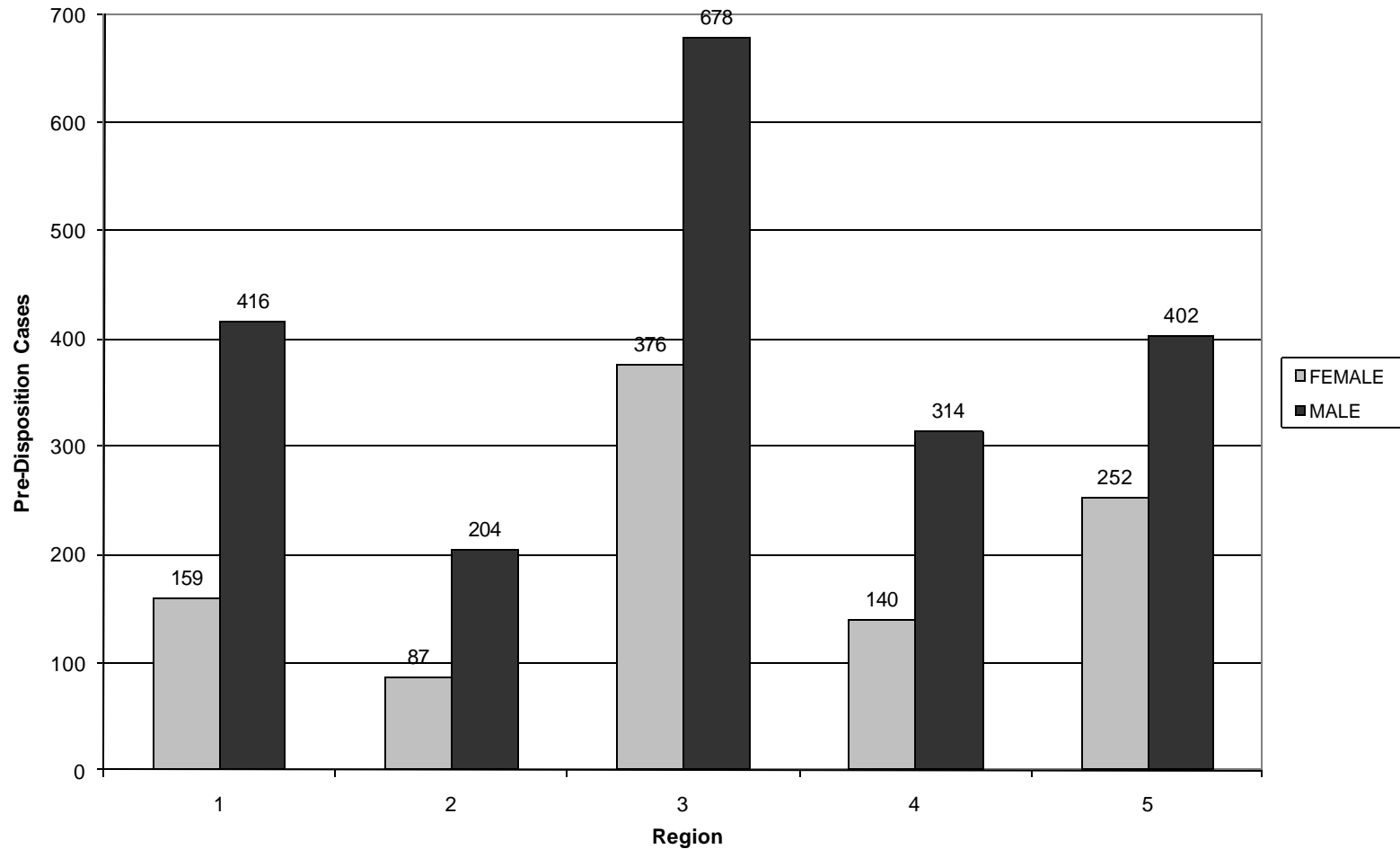
⁷Hispanic and White (non-Hispanic) had the highest counts. These two groups comprise 86.8% of the total number of predisposition-cases statewide.

Source: CbyW 09-30-10 Extract 1

⁷ Pre-disposition counts for individuals with missing ethnicity were not included in the chart. Therefore, the counts may not always sum to the total. A total of 3.6% of cases were missing ethnicity.

Pre-Disposition Cases for Primary Assignment, by Gender, by Region

JJD Pre-Disposition Cases for Primary Assignments Snapshot 09/30/10

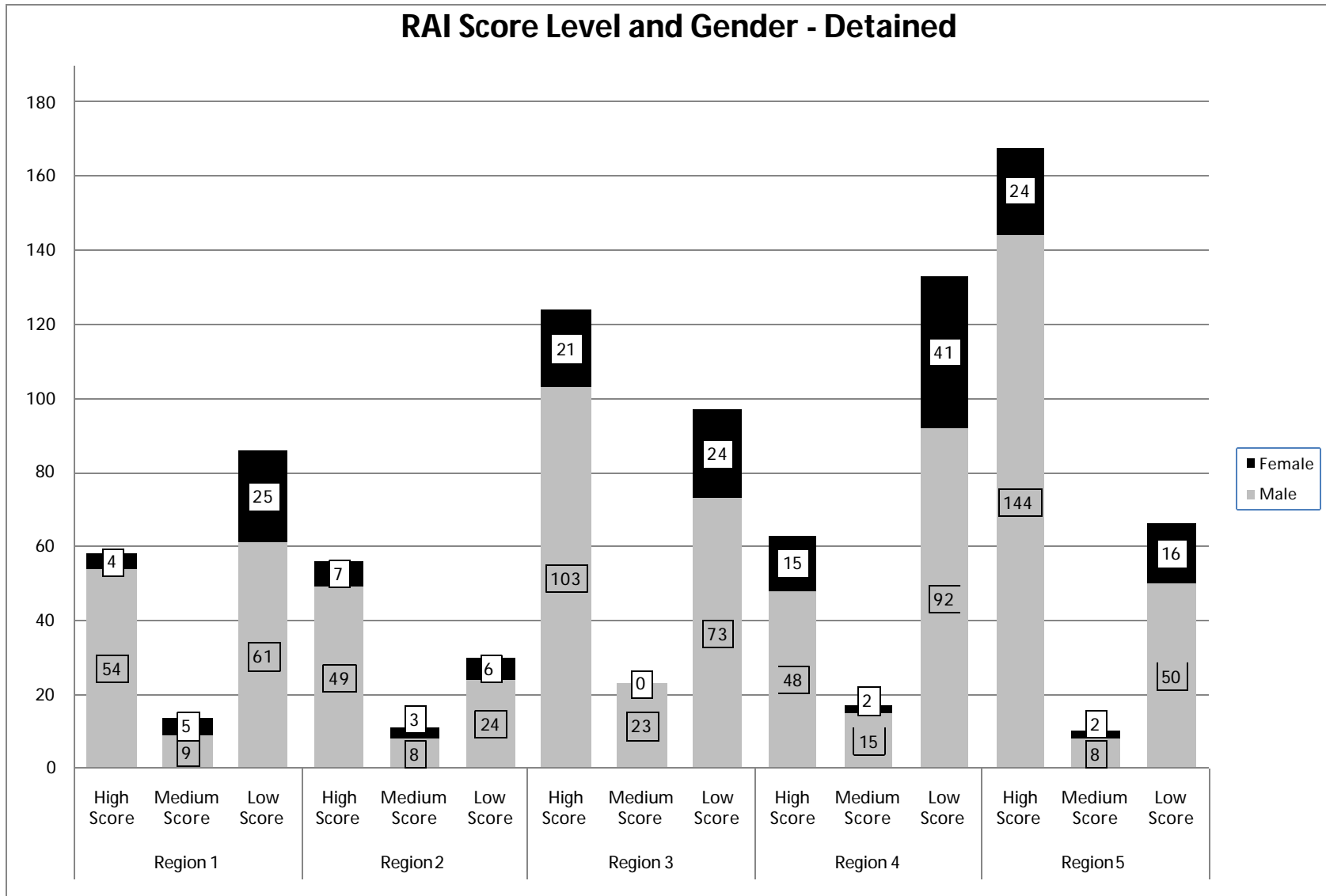


⁸Across all regions, males made up approximately 66.1% and females 33.3% of the total number of pre-disposition cases on the last day of the quarter.

Source: CbyW 09-30-10 Extract 1

⁸ In the graph above pre-disposition counts for individuals with missing gender were not included. Less than 1% of cases were missing gender.

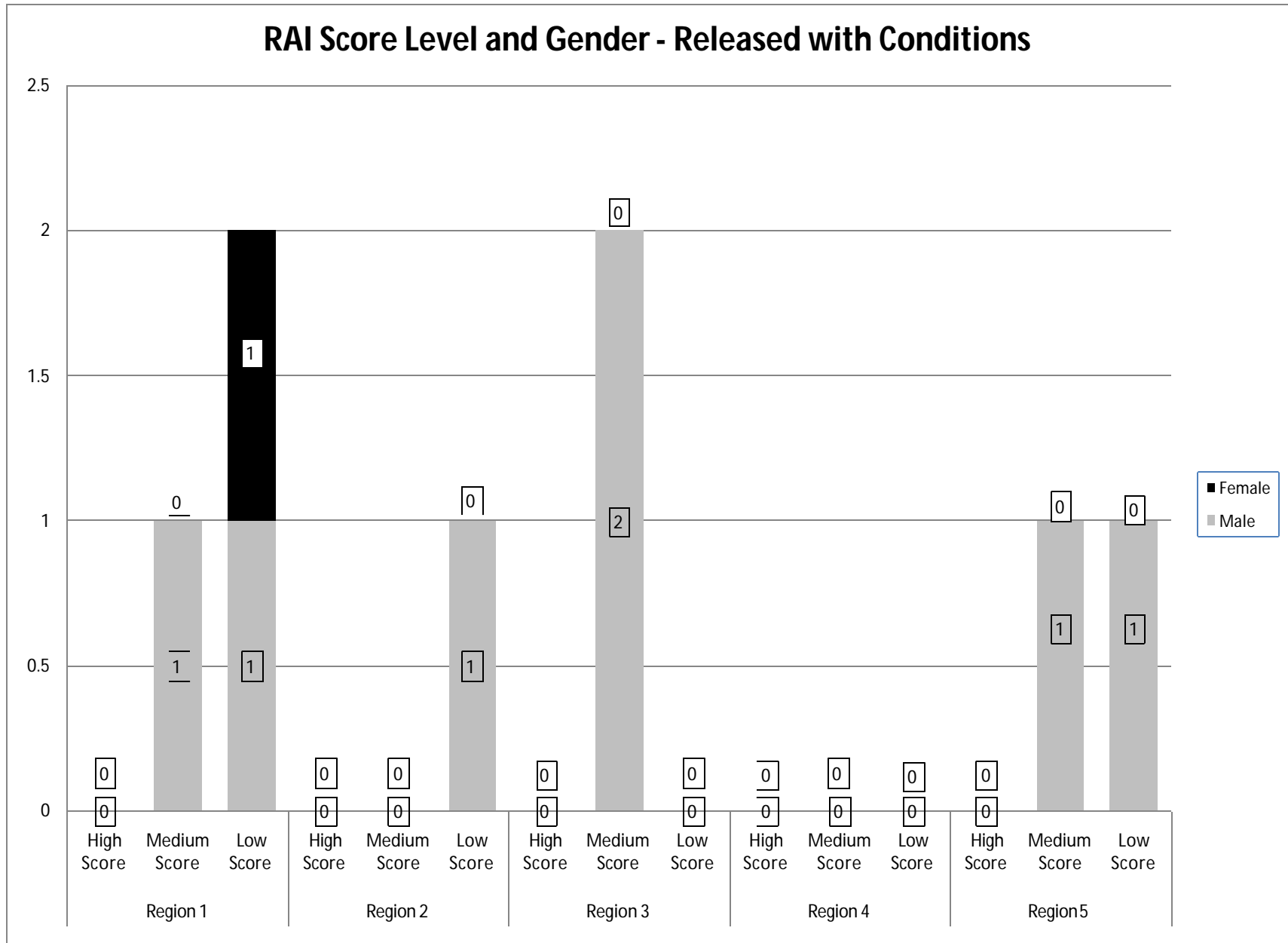
RAI Score Level and Gender – Detained



High, medium, and low score levels resulted in detention 99.2%, 86.2%, and 43.1% of the time, respectively, for all RAI's that were screened statewide.

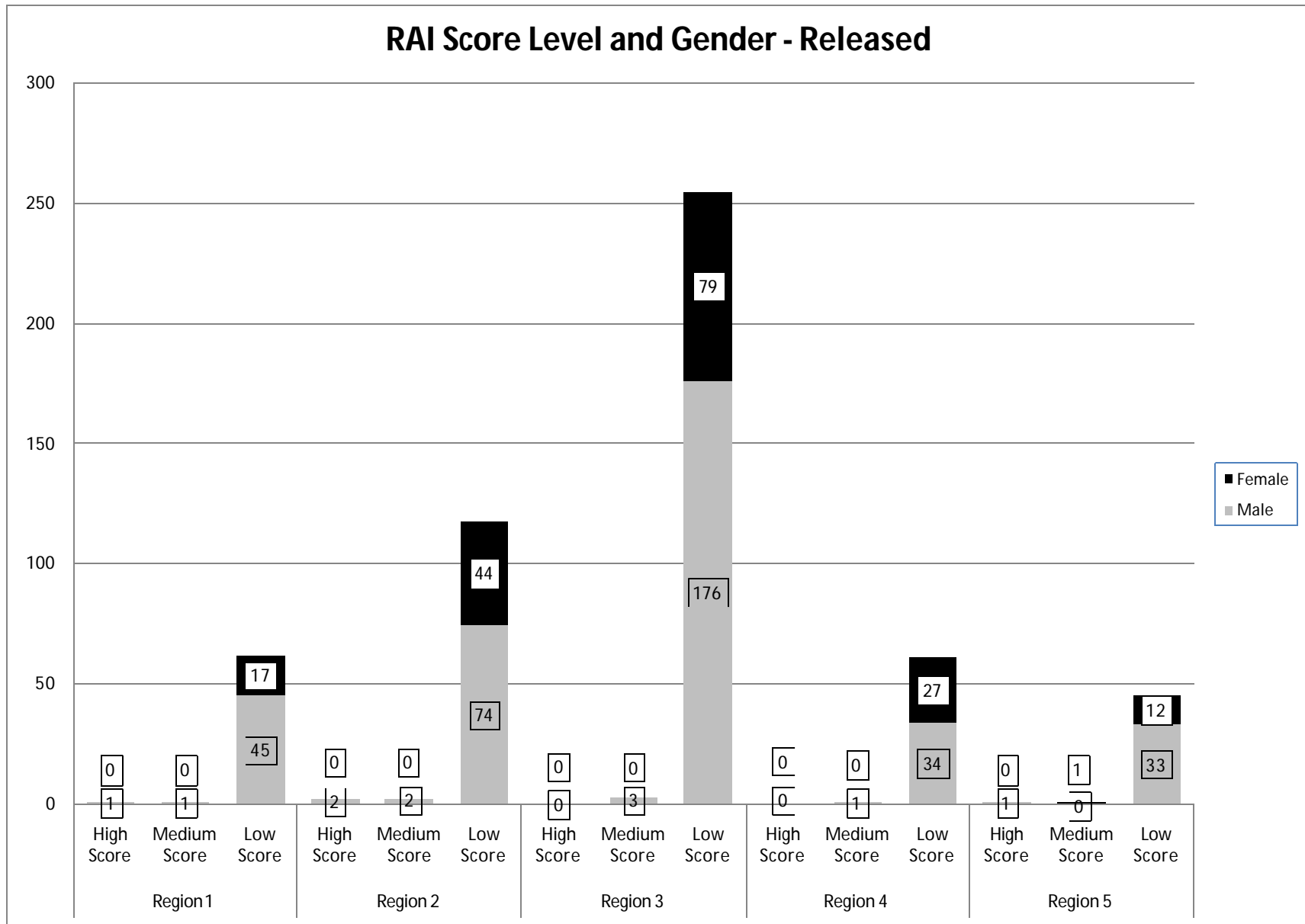
Source: Screening, Admissions and Releases Application (SARA) RAI Extract

RAI Score Level and Gender – Released with Conditions



Source: Screening, Admissions and Releases Application (SARA) RAI Extract

RAI Score Level and Gender – Released



Source: Screening, Admissions and Releases Application (SARA) RAI Extract

FY11 Q1 Detentions by Ethnicity

FY11 Q1 Detention Decision by Ethnicity										
Region	County	American Indian or Alaskan Native	Hispanic	2 or more	Black or African American	Asian	Native Hawaiian/Pacific Islander	Unknown	White	Total
1	Cibola	3	7	2	1	0	0	0	2	15
	Mckinley	14	16	2	1	0	0	5	3	41
	San Juan	27	15	4	1	0	2	1	11	61
	Sandoval	3	25	1	4	0	0	0	11	44
	Valencia	0	28	0	2	0	0	0	11	41
Region 1 Total		47	91	9	9	0	2	6	38	202
2	Colfax	0	2	0	0	0	0	0	2	4
	Union	0	2	0	0	0	0	0	0	2
	Guadalupe	0	1	0	0	0	0	0	0	1
	Mora	0	1	0	0	0	0	0	0	1
	Rio Arriba	1	35	0	0	0	0	1	0	37
	San Miguel	0	12	0	0	0	0	0	0	12
	Santa Fe	2	35	1	1	0	0	1	5	45
Taos	3	10	0	0	0	0	0	1	14	
Region 2 Total		6	98	1	1	0	0	2	8	116
3	Bernalillo	12	208	7	15	1	0	0	60	303
Region 3 Total		12	208	7	15	1	0	0	60	303
4	Chaves	0	30	0	0	0	0	0	12	42
	Curry	0	65	2	6	0	0	2	25	100
	De Baca	0	1	0	0	0	0	0	0	1
	Eddy	0	33	0	0	0	0	0	15	48
	Lea	0	30	1	10	0	0	1	12	54
	Quay	0	3	0	2	0	0	0	2	7
Roosevelt	0	6	0	0	0	0	0	5	11	
Region 4 Total		0	168	3	18	0	0	3	71	263
5	Dona Ana	1	106	1	2	1	0	2	12	125
	Grant	0	19	0	0	0	0	0	6	25
	Hidalgo	0	12	0	0	0	0	3	0	15
	Lincoln	2	5	0	0	0	0	0	7	14
	Luna	0	25	1	0	0	0	0	2	28
	Otero	0	37	2	1	0	0	0	6	46
	Sierra	0	5	0	0	0	0	0	7	12
	Socorro	0	8	0	0	0	0	0	0	8
Torrance	0	0	0	0	0	0	0	1	1	
Region 5 Total		3	217	4	3	1	0	5	41	274
Total		68	782	24	46	2	2	16	218	1158

Source: Screening, Admissions and Releases Application (SARA) RAI Extract

FY11 Q1 Detentions by Gender

FY11 Q1 Detention Decision by Gender				
Region	County	Female	Male	Total
1	Cibola	5	10	15
	Mckinley	9	32	41
	San Juan	15	46	61
	Sandoval	8	36	44
	Valencia	8	31	39
Region 1 Total		45	155	200
2	Colfax	0	4	4
	Union	0	2	2
	Guadalupe	0	1	1
	Mora	0	1	1
	Rio Arriba	6	31	37
	San Miguel	2	10	12
	Santa Fe	6	39	45
	Taos	3	11	14
Region 2 Total		17	99	116
3	Bernalillo	55	244	299
Region 3 Total		55	244	299
4	Chaves	11	30	41
	Curry	20	78	98
	De Baca	0	1	1
	Eddy	18	30	48
	Lea	10	44	54
	Quay	0	7	7
	Roosevelt	4	7	11
Region 4 Total		63	197	260
5	Dona Ana	19	105	124
	Grant	2	23	25
	Hidalgo	2	13	15
	Lincoln	7	7	14
	Luna	9	19	28
	Otero	7	37	44
	Sierra	1	11	12
	Socorro	3	5	8
	Torrance	0	1	1
Region 5 Total		50	221	271
Total		230	916	1146

Source: Screening, Admissions and Releases Application (SARA) RAI Extract

FY11 Q1 Overrides by Reason

FY11 Q1 Overrides by Reason for Referral									
Region	County	Delinquent offense	Delinquent offense + Probation Violation (no warrant)	Probation Violation	Probation Violation (Warrant)	Warrant - arrest	Warrant - Bench	Warrant - FTA	Total
1	Cibola	2	0	0	2	2	1	0	7
	Mckinley	27	0	0	0	1	0	2	30
	San Juan	16	1	10	3	3	3	0	36
	Sandoval	12	1	0	3	3	0	1	20
	Valencia	1	2	0	0	3	1	4	11
Region 1 Total		58	4	10	8	12	5	7	104
2	Colfax	0	1	0	0	0	0	0	1
	Rio Arriba	13	1	0	1	2	0	0	17
	San Miguel	1	1	0	0	0	0	0	2
	Santa Fe	15	1	1	2	3	0	1	23
	Taos	0	1	0	0	0	0	0	1
Region 2 Total		29	5	1	3	5	0	1	44
3	Bernalillo	51	29	0	28	2	1	12	123
Region 3 Total		51	29	0	28	2	1	12	123
4	Chaves	10	2	0	6	4	0	0	22
	Curry	19	3	6	12	29	2	4	75
	Eddy	5	0	0	2	6	0	0	13
	Lea	12	0	0	5	5	3	3	28
	Quay	4	0	0	2	0	0	0	6
	Roosevelt	5	0	0	0	2	0	0	7
Region 4 Total		55	5	6	27	46	5	7	151
5	Dona Ana	17	7	0	2	5	1	0	32
	Grant	5	1	0	2	2	0	0	10
	Hidalgo	5	0	1	1	0	0	0	7
	Lincoln	2	0	0	0	1	0	0	3
	Luna	7	0	0	1	0	0	0	8
	Otero	0	0	0	1	5	1	0	7
	Sierra	4	0	0	1	1	0	0	6
	Socorro	0	1	0	1	3	0	0	5
Torrance	1	0	0	0	0	0	0	1	
Region 5 Total		41	9	1	9	17	2	0	79
Total		234	52	18	75	82	13	27	501

Source: Screening, Admissions and Releases Application (SARA) RAI Extract

Admissions and Releases by Center and Region

FY11 Q1 Admissions and Releases by Center			
Detention Center	Admissions	Releases	Change
Adult Facility	42	38	-4
Bernco Juv Det/Youth Services Ctr	312	306	-6
Chaves County JDC	46	48	2
Curry County JDC	89	84	-5
Dona ana County JDC	127	136	9
Eddy County JDC	33	35	2
Grant County JDC	0	0	0
Hobbs PD	0	0	0
Lea County JDC	40	37	-3
Los Alamos PD	0	0	0
Luna County JDC	77	76	-1
McKinley County JDC	41	37	-4
Quay County JDC	7	10	3
San Juan County JDC	51	54	3
Santa Fe Youth Development Ctr	80	88	8
Taos County JDC	13	12	-1
Total	958	961	3

FY11 Q1 Admissions and Releases by Region			
Region	Admissions	Releases	Change
1	159	155	4
2	96	105	-9
3	248	245	3
4	213	206	7
5	242	250	-8
Total	958	961	-3

Source: Screening, Admissions and Releases Application (SARA) RAI Extract

Average Length of Stay and Daily Population by Center and Region

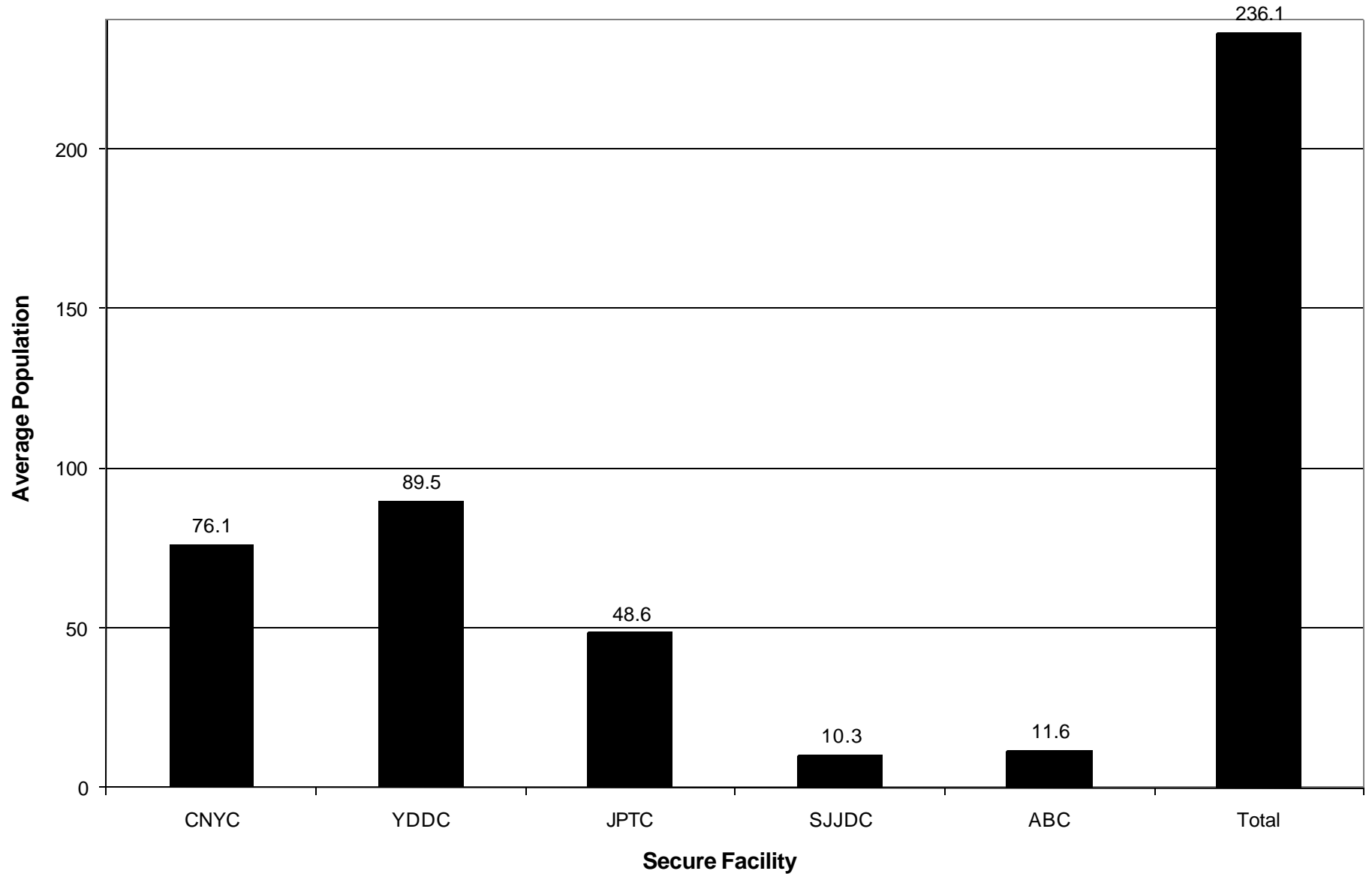
FY11 Q1 Average Length of Stay and Daily Population by Center		
Detention Center	ALOS	ADP
Adult Facility	13.82	16
Bernco Juv Det/Youth Services Ctr	18.71	83
Chaves County JDC	17.81	12
Curry County JDC	9.57	10
Dona ana County JDC	13.95	22
Eddy County JDC	26.46	13
Grant County JDC	0	0
Hobbs PD	0	1
Lea County JDC	23.97	9
Los Alamos PD	0	0
Luna County JDC	12.54	11
McKinley County JDC	14.22	9
Quay County JDC	22.2	4
San Juan County JDC	17	15
Santa Fe Youth Development Ctr	21.44	17
Taos County JDC	17.08	1

FY11 Q1 Average Length of Stay and Daily Population by Region		
Region	ALOS	ADP
1	18.49	46
2	20.58	20
3	17.48	64
4	17.88	55
5	13.35	38

Source: Screening, Admissions and Releases Application (SARA) ADP/ALOS Extract

Average JJS Secure Facility Population

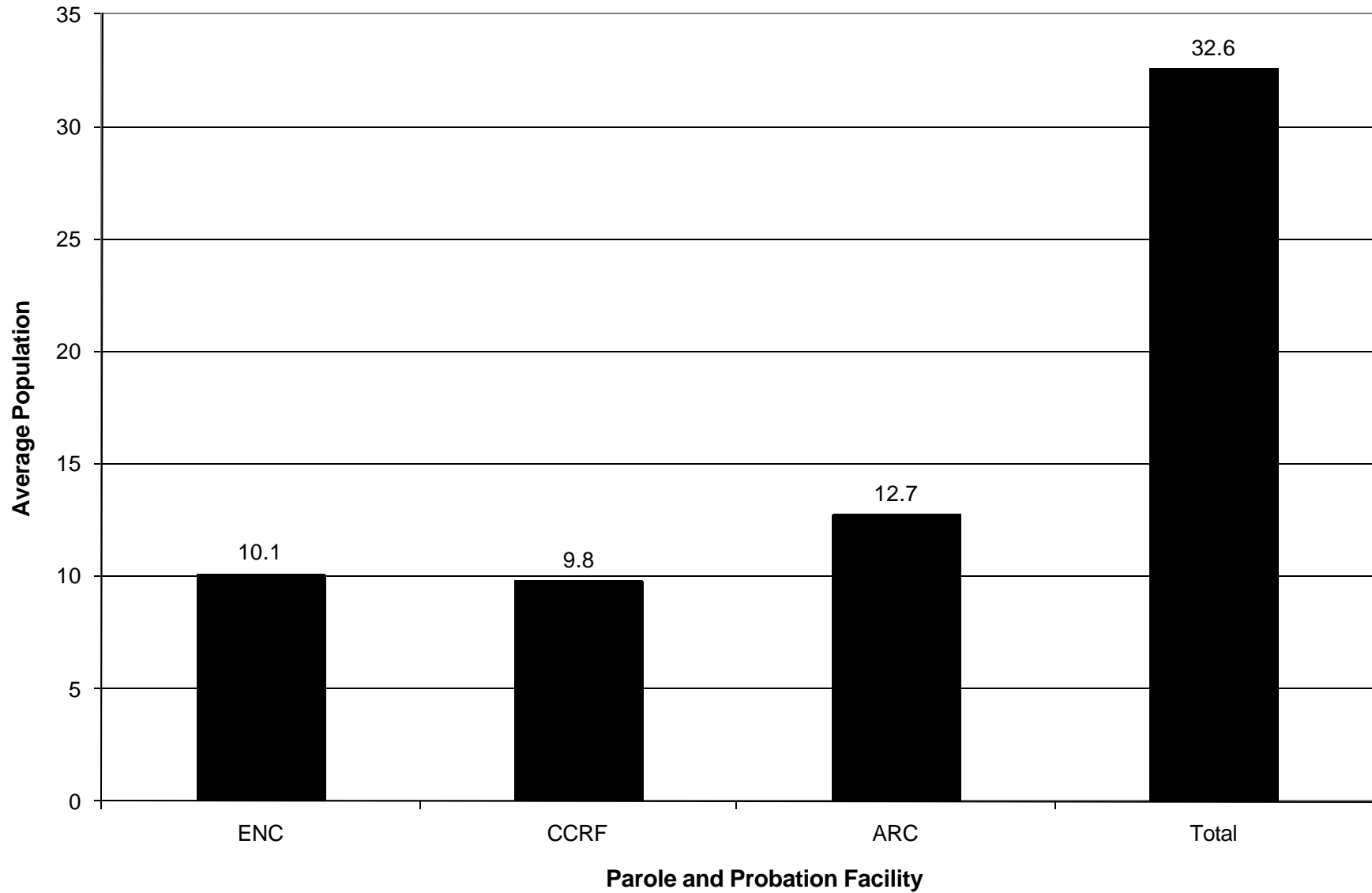
Average Population (FY11 Q1)



Source: T-Population with Facility SDM and Status

Average Reintegration Center Population

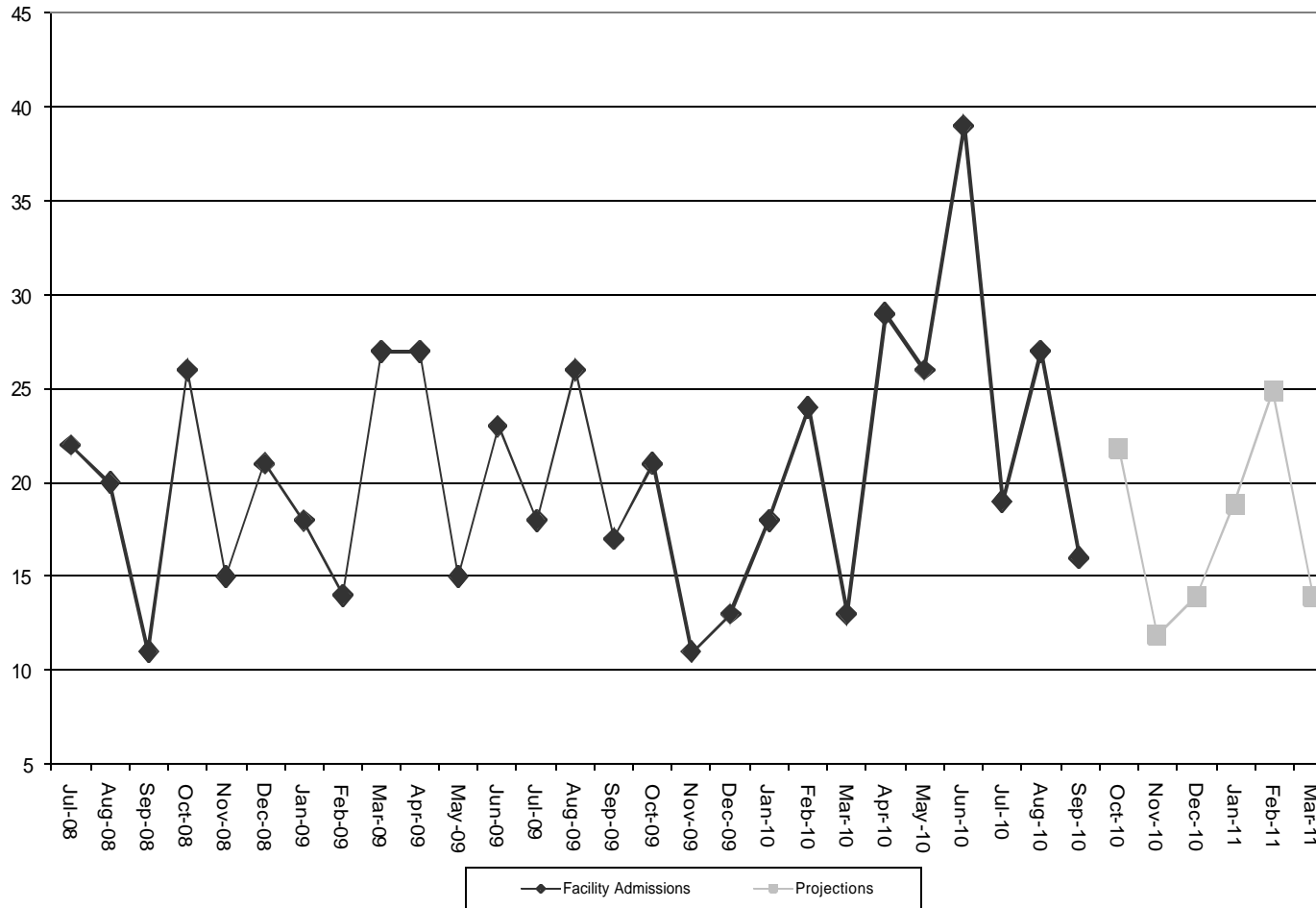
Average Population (FY11 Q1)



Source: T-Population with Facility SDM and Status

Monthly Facility Admission Projections

Facility Admissions for Term/Term Concurrent Commitments - Historical & 6 Month Projection



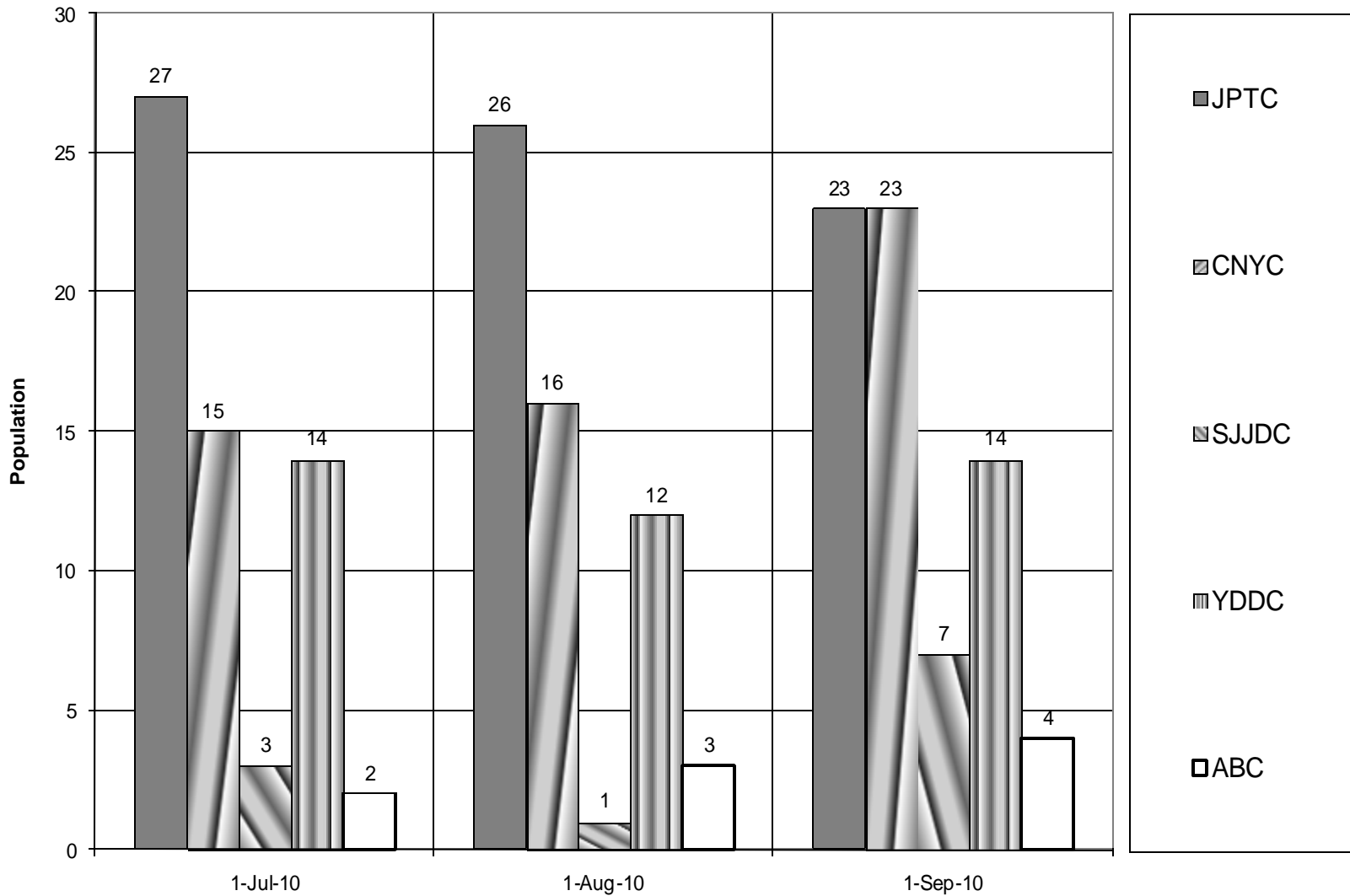
Time Period	Facility Admissions	Projections
July-08	22	
August-08	20	
September-08	11	
October-08	26	
November-08	15	
December-08	21	
January-09	18	
February-09	14	
March-09	27	
April-09	27	
May-09	15	
June-09	23	
July-09	18	
August-09	26	
September-09	17	
October-09	21	
November-09	11	
December-09	13	
January-10	18	
February-10	24	
March-10	13	
April-10	29	
May-10	26	
June-10	39	
July-10	19	
August-10	27	
September-10	16	
October-10		22
November-10		12
December-10		14
January-11		19
February-11		25
March-11		14

Note: Chart and Table do not include counts for Diagnostic or RTC Admissions.

Source: FY02 - FY06 Commitments Updated/FY07 Commitments Combined Final/FY08-11 Admissions

Facility Population, by Low Risk Level on Specified Date

Low Risk

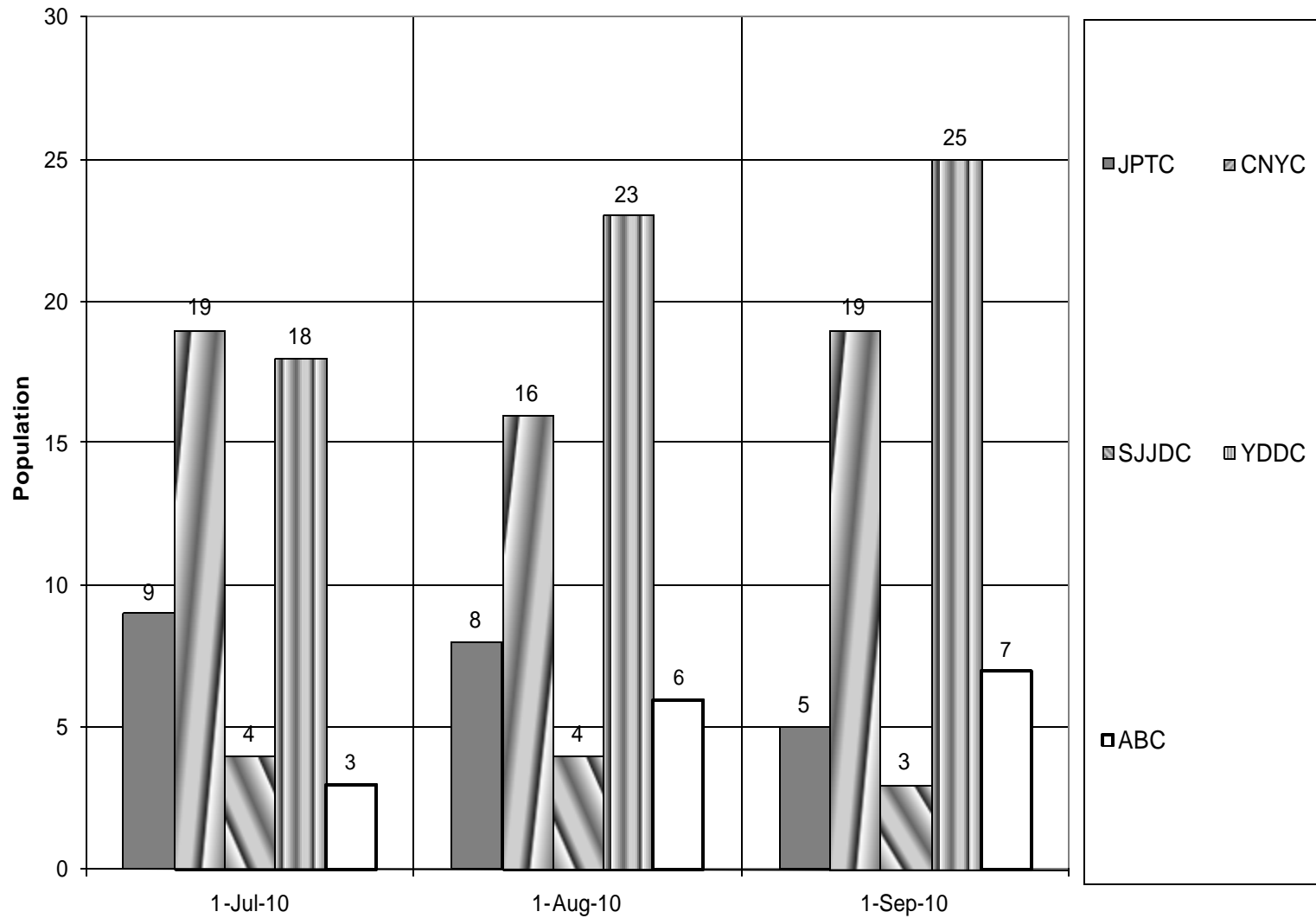


Note: Population counts are calculated from snapshots taken at the beginning of each month.

Source: T-Population with Facility SDM and Status

Facility Population, by Medium Risk Level on Specified Date

Medium Risk

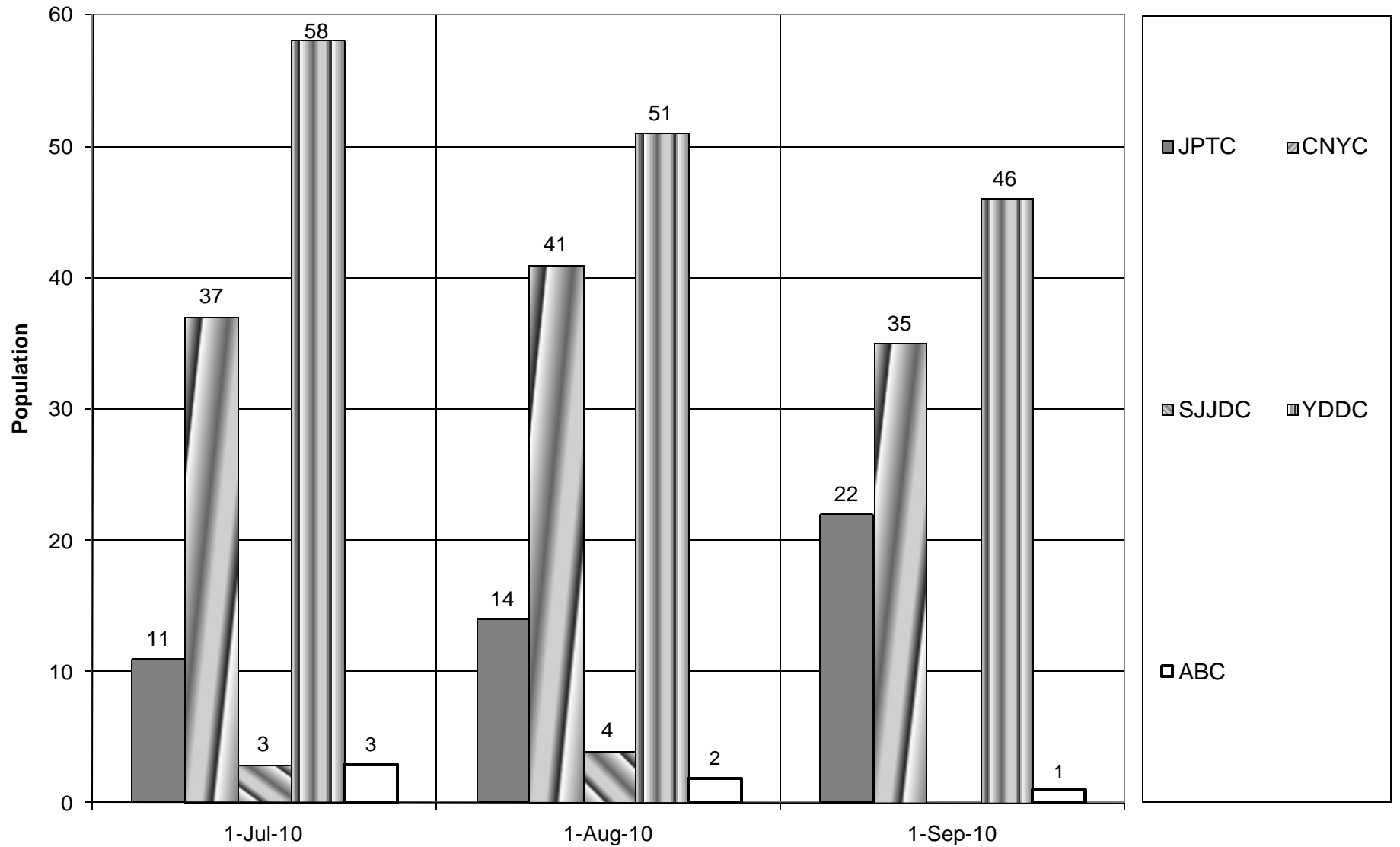


Note: Population counts were derived from snapshots taken at the beginning of each month.

Source: T-Population with Facility SDM and Status

Facility Population, by High Risk Level on Specified Date

High Risk

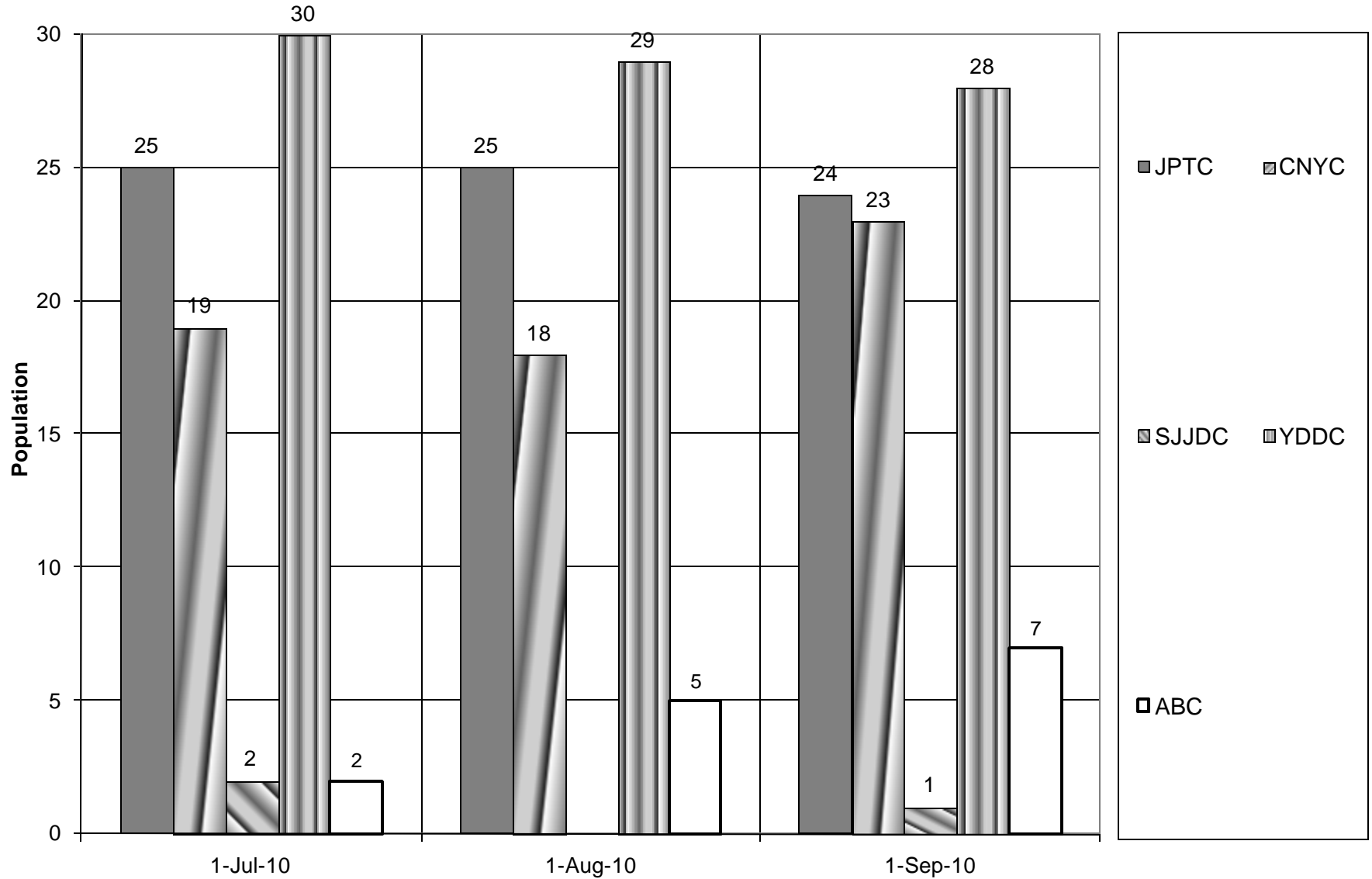


Note: Population counts were derived from snapshots taken at the beginning of each month.

Source: T-Population with Facility SDM and Status

Facility Population, by Low Needs Level on Specified Date

Low Needs

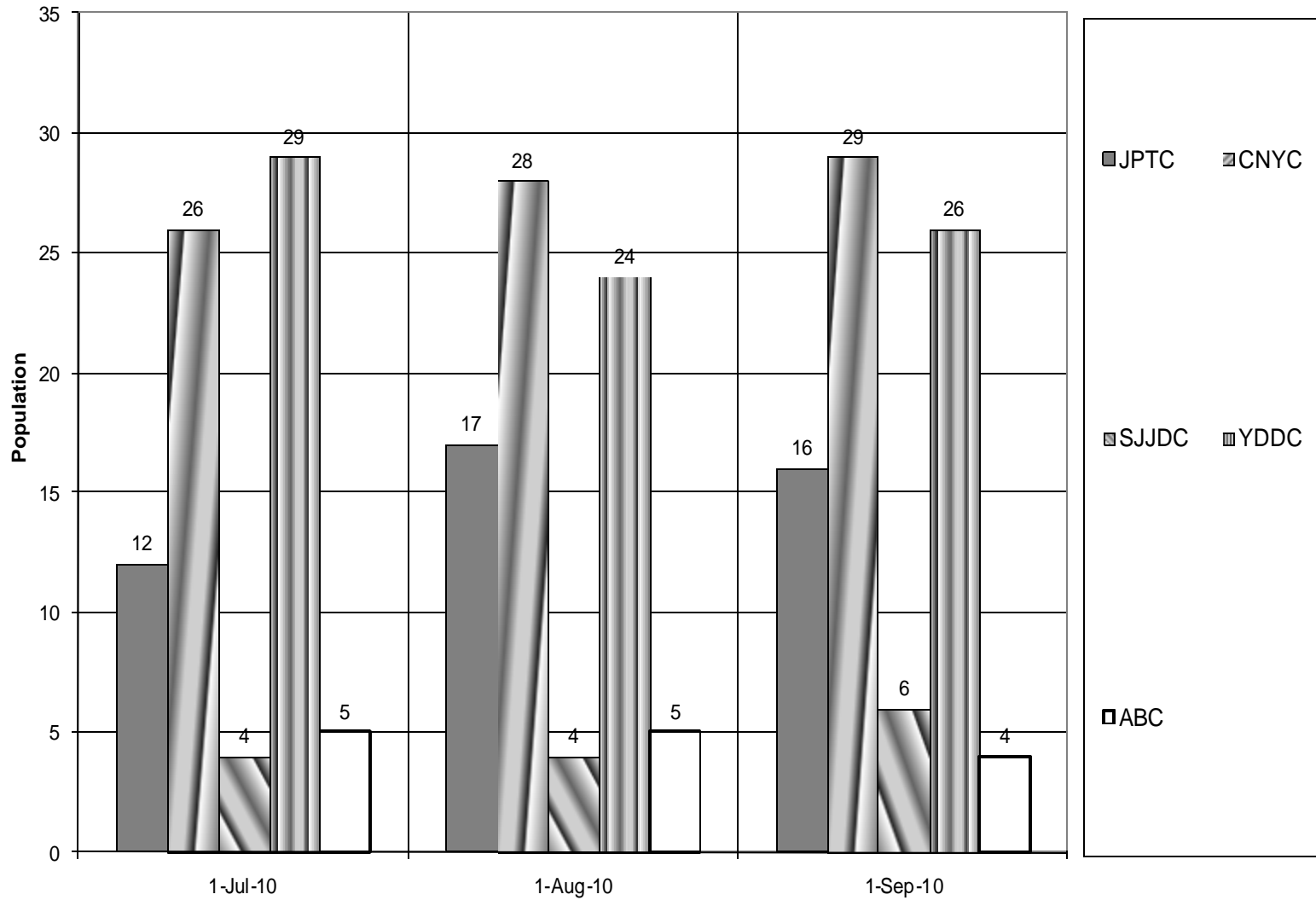


Note: Population counts were derived from snapshots taken at the beginning of each month.

Source: T-Population with Facility SDM and Status

Facility Population, by Moderate Needs Level on Specified Date

Moderate Needs

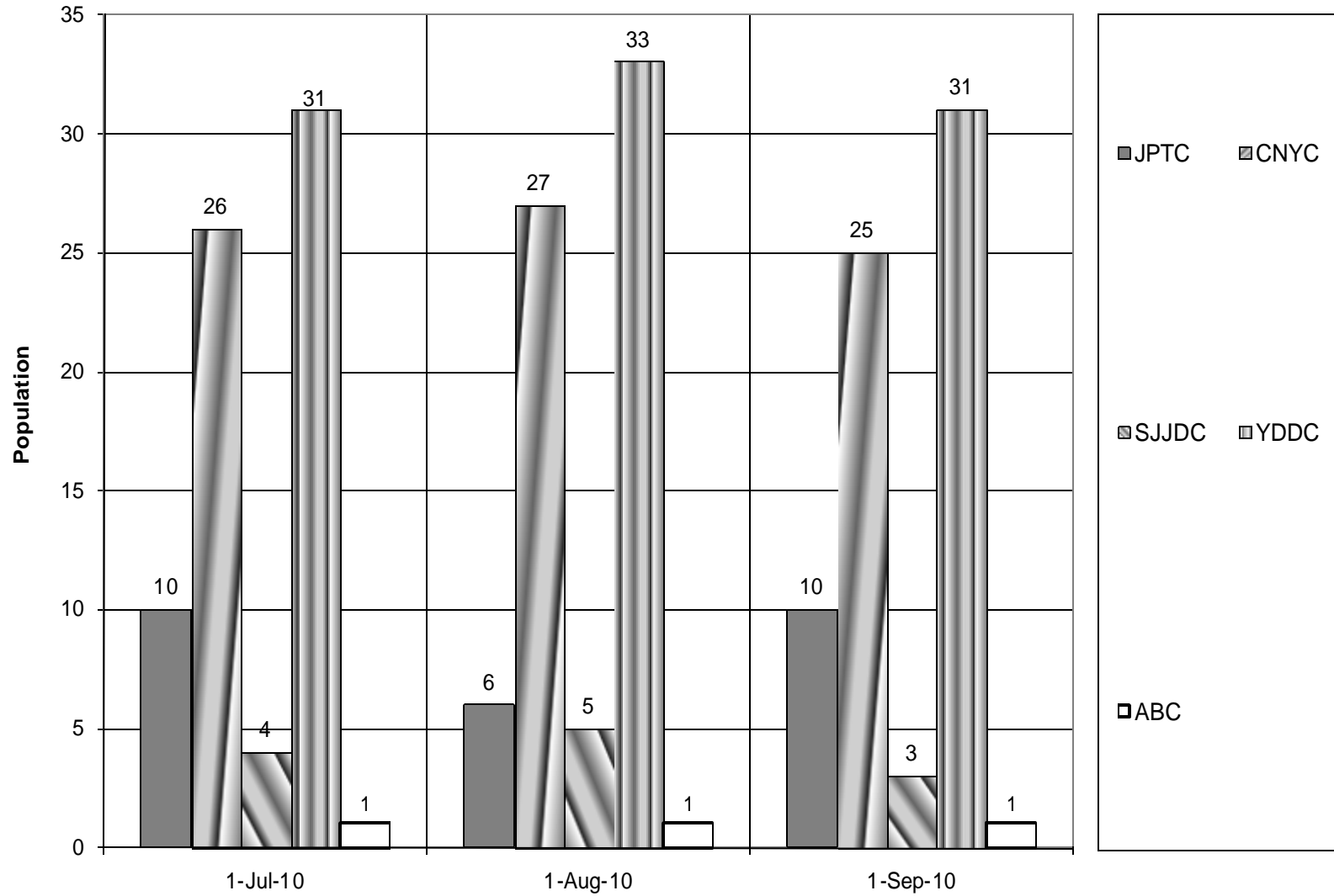


Note: Population counts were derived from snapshots taken at the beginning of each month.

Source: T-Population with Facility SDM and Status

Facility Population, by High Needs Level on Specified Date

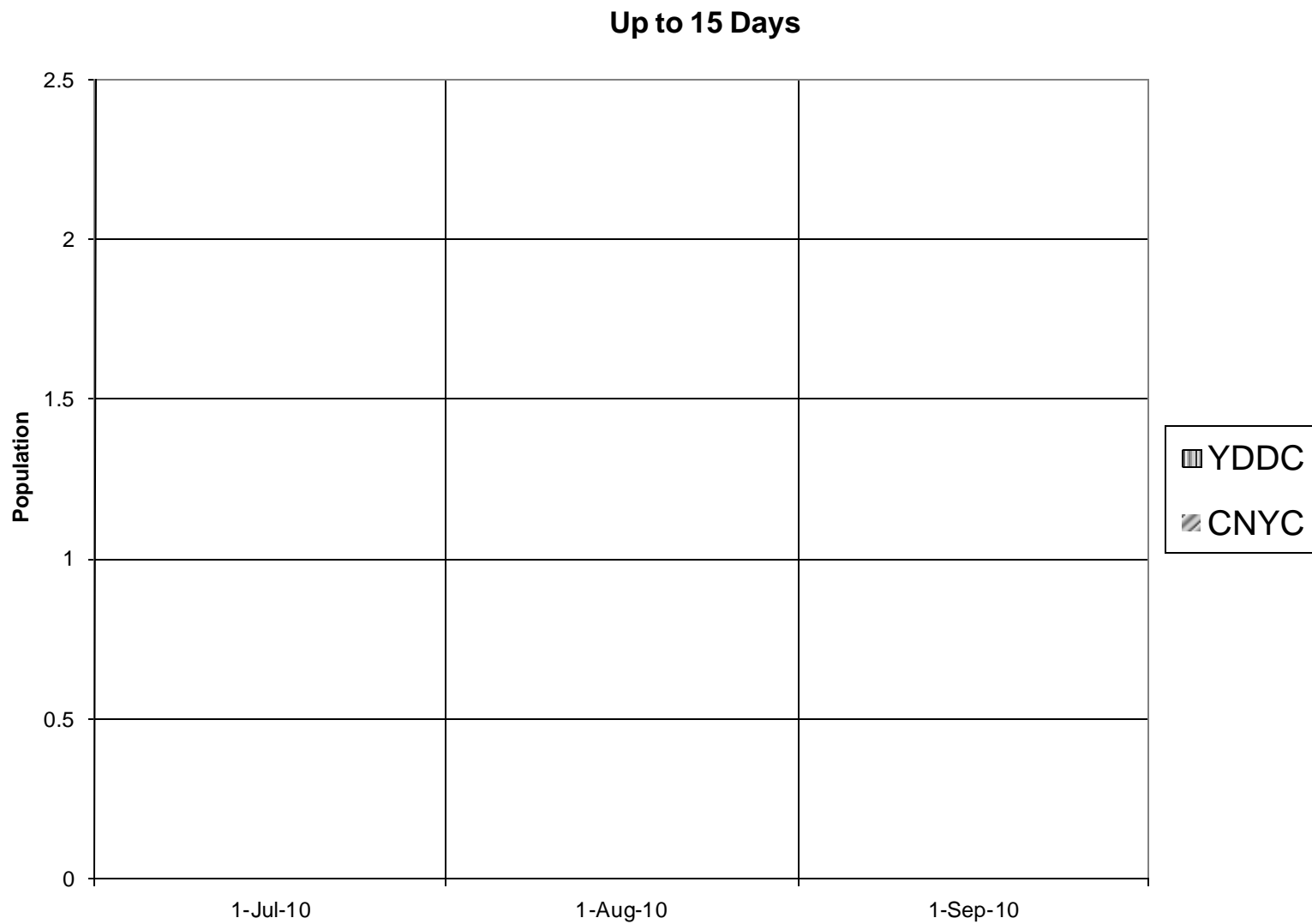
High Needs



Note: Population counts were derived from snapshots taken at the beginning of each month.

Source: T-Population with Facility SDM and Status

Facility Population, by Commitment Length (Up to 15 Days) on Specified Date

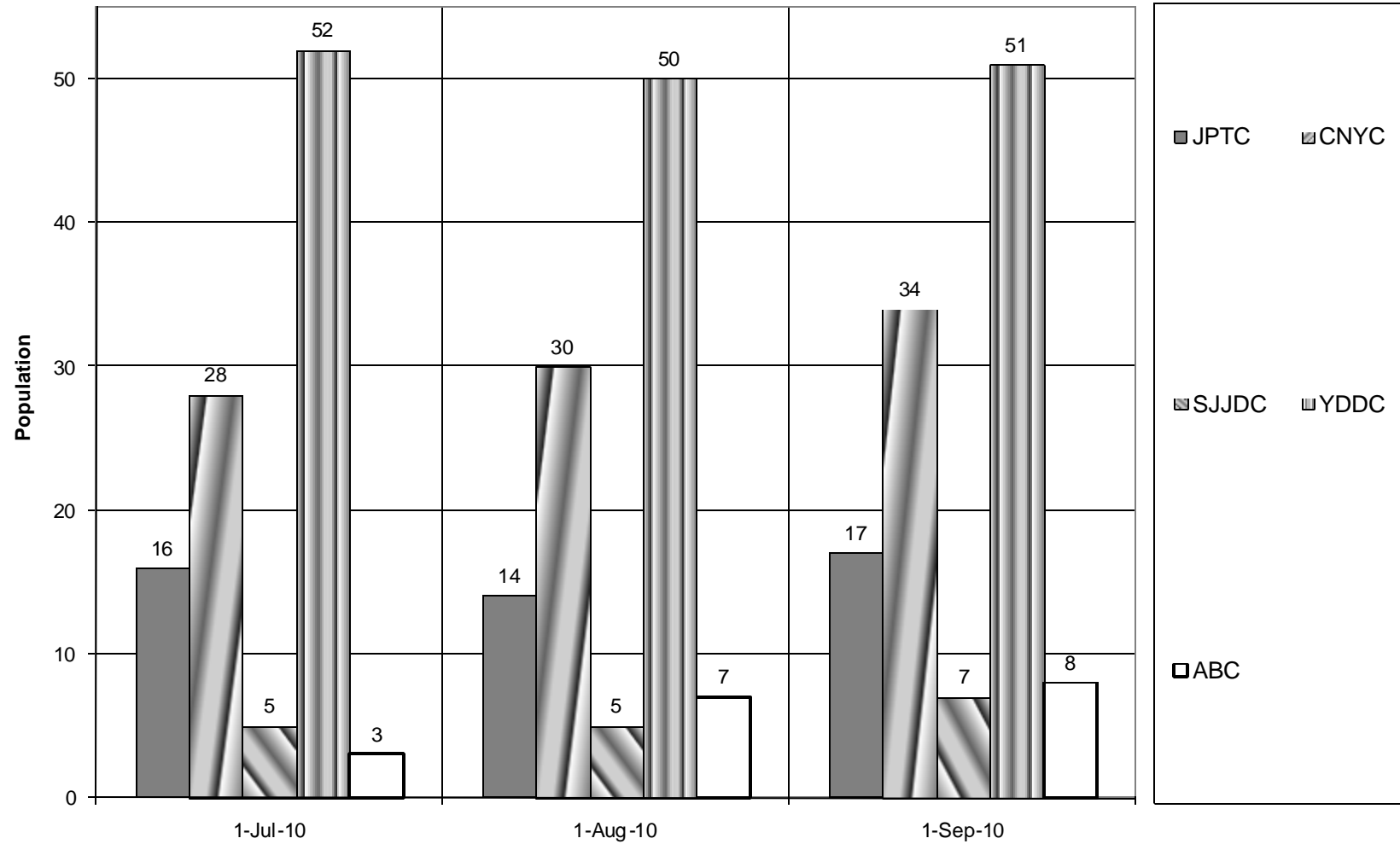


Note: Population counts were derived from snapshots taken at the beginning of each month.

Source: T-Population with Facility SDM and Status

Facility Population, by Commitment Length (Up to 1 Year) on Specified Date

Up to 1 Year

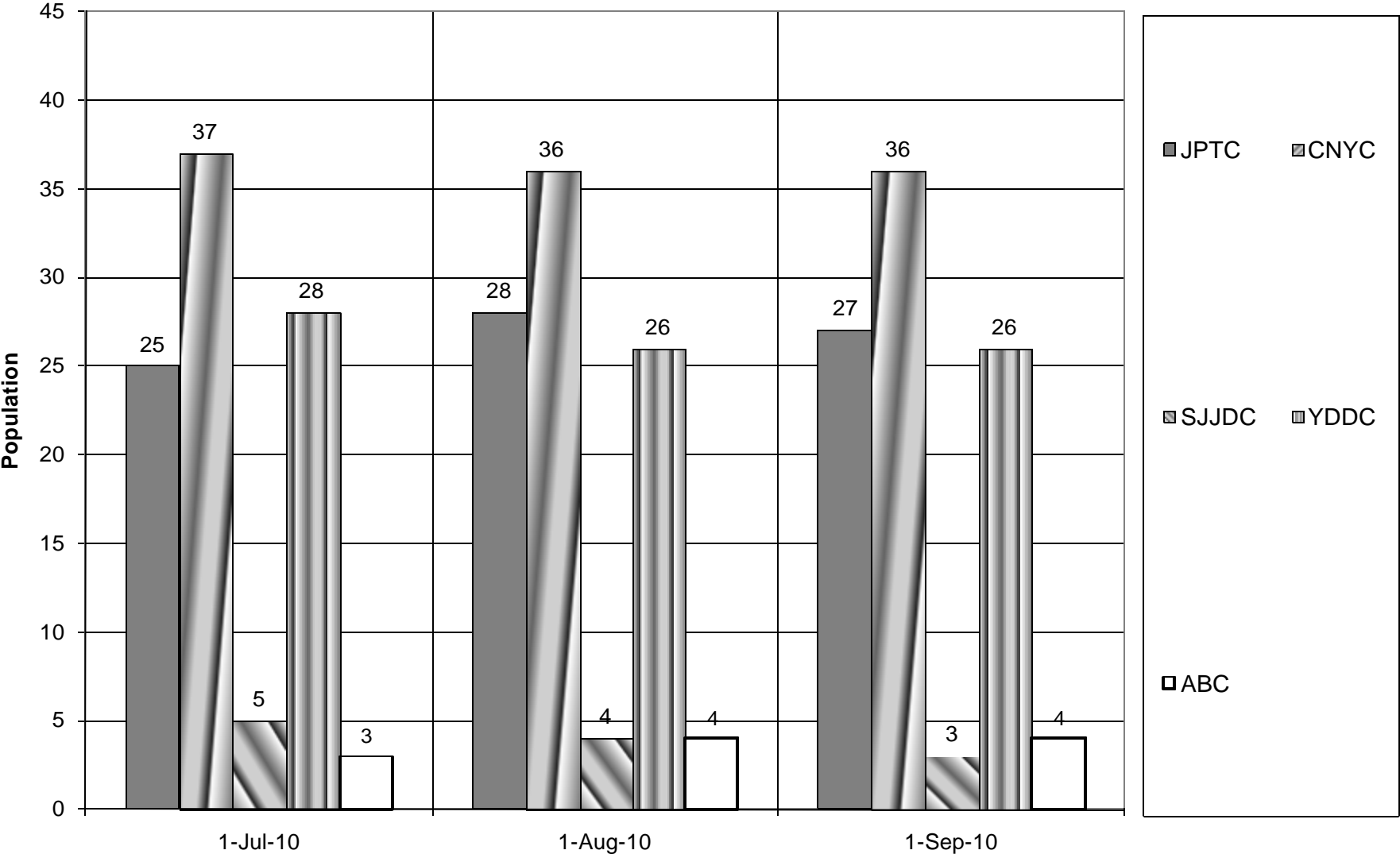


Note: Population counts were derived from snapshots taken at the beginning of each month.

Source: T-Population with Facility SDM and Status

Facility Population, by Commitment Length (Up to 2 Years) on Specified Date

Up to 2 Years

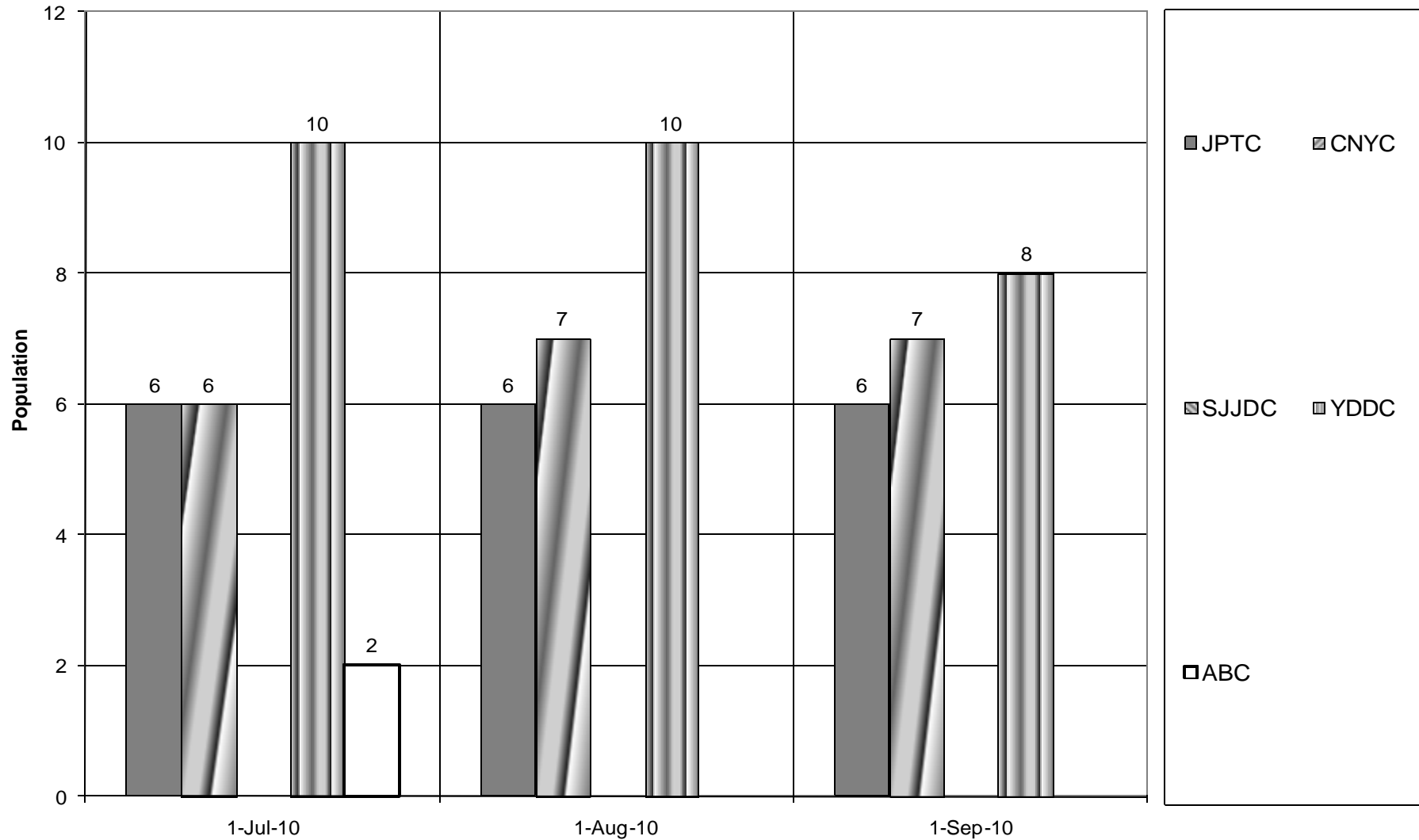


Note: Population counts were derived from snapshots taken at the beginning of each month.

Source: T-Population with Facility SDM and Status

Facility Population, by Commitment Length (Up to Age 21) on Specified Date

Up to Age 21



Note: Population counts were derived from snapshots taken at the beginning of each month.

Source: T-Population with Facility SDM and Status

Admissions & Discharges, by Commitment Type and Ethnicity

FY11 Q1 Admissions					
Ethnicity	Diagnostic	RTC	Term	Term-Concurrent	Total
American Indian or Alaskan Native			8		8
Asian			1		1
Black or African American			3	1	4
Hispanic	2	8	44	2	56
White		2	6		8
Total	2	10	62	3	77

FY11 Q1 Discharges				
Ethnicity	Diagnostic	RTC	Term	Total
2 or more			1	1
American Indian or Alaskan Native		2	3	5
Hispanic	1	7	54	62
White		3	7	10
Total	1	12	65	78

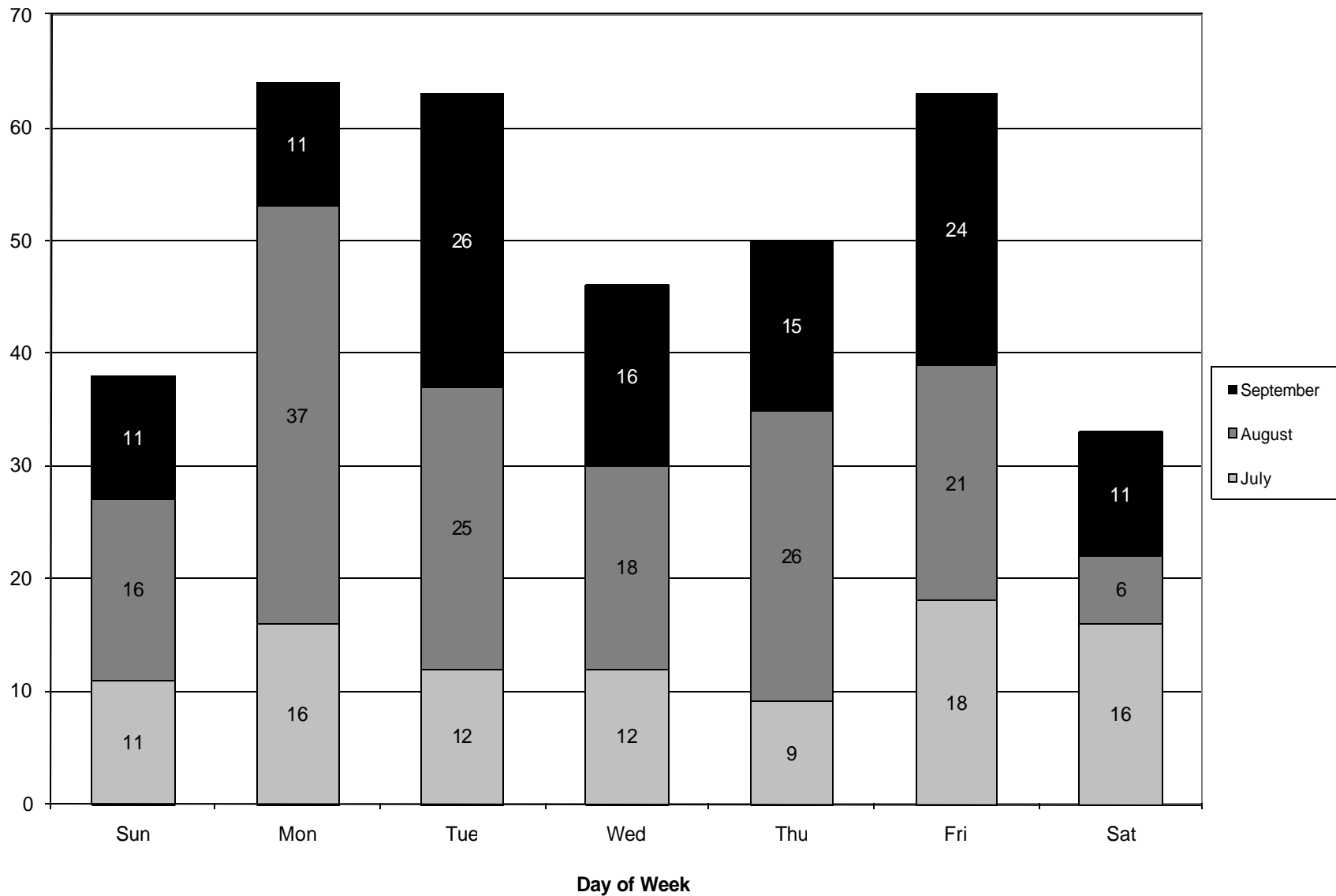
⁹From FY10 Q4 to FY11 Q1 admissions decreased by 28% and discharges increased by 4%.

Source: Admissions Final with SDM Ref Count & 9-Releases Final

⁹ Note that diagnostic evaluations were excluded from the admissions and discharges tables.

Disciplinary Incident Reports by Month & Day of the Week, FY11 Q1

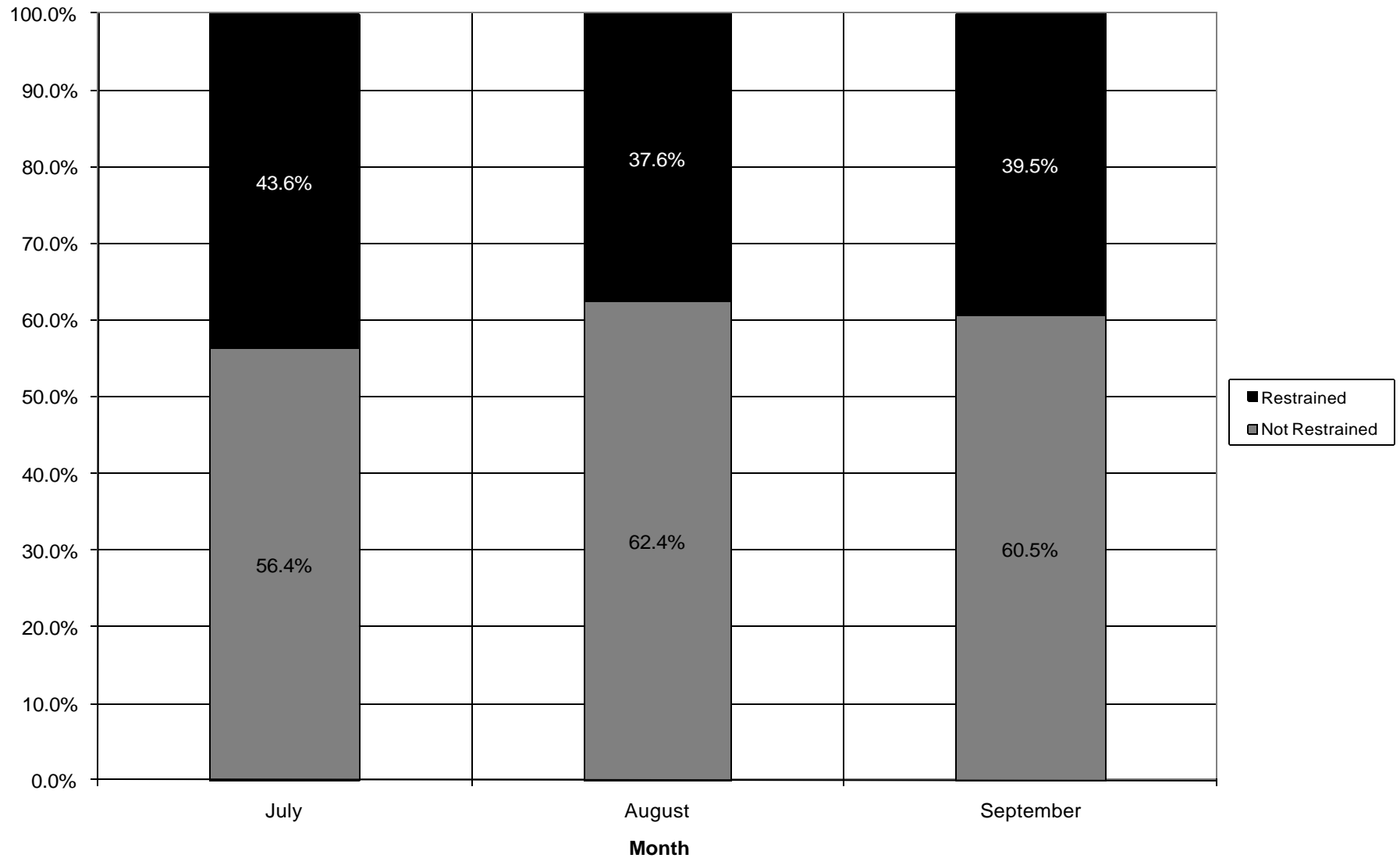
Unique DIR's by Month and Day of Week - FY11 Q1



Source: FACTS Incidents – Client Data

Incidents Involving Client Restraint, FY11 Q1

Percentage of Clients Restrained During an Incident - FY11 Q1



During the 1st quarter of fiscal year 2011, 39.8% of clients involved in incidents were restrained. The types of restraints included mechanical, therapeutic, and other.

Source: FACTS Incidents – Client Data