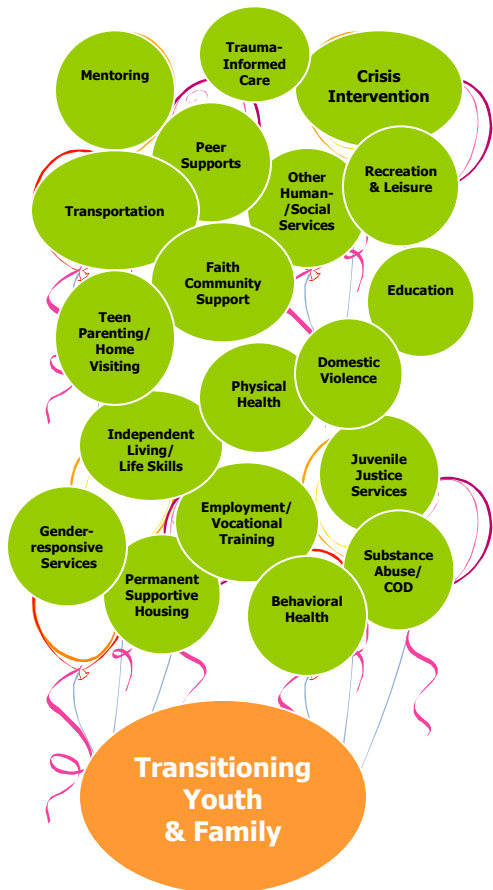


Linking Youth with New Mexico's System of Care

The Transition Services team facilitates youth choice, linkage, access to and engagement with New Mexico's comprehensive system of care in multiple domains, including...



Transition Services Locations and Staffing

Main Office

CYFD
Youth and Family Services
300 San Mateo, NE - Suite 110
Albuquerque, NM 87108

Transition Services Manager

Robert Gerlock
Phone: (505) 383-0110
Fax: (505) 383-0111

Transition Services Coordinators

Albuquerque/Bernalillo County

- Barbara McRae (505) 383-0112
- Don Shapiro (505) 383-0117
- Kelli Vigil (505) 383-0121
- Doreen Vigil-Chavez (505) 383-0120
- Community Services Review-Vacant

Clovis

- Becky Gear (575) 742-3998

Farmington

- Carol Leuenhagen (505) 325-1631 x116

Hobbs

- Tracy Haynes (575) 397-2478

Las Cruces

- Vacant

Raton

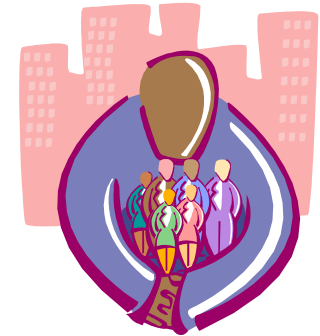
- Vacant

Santa Fe

- Rosemary Nowak (505) 827-4550

Transition Services

*An Intensive Reintegration
Services Program ...*



*...for youth exiting CYFD Juvenile
Justice facilities...*

*... to actively promote their
successful return to the community*



Our Purpose...

- Prepare committed JJS youth for re-entry into their communities
- Work collaboratively with the youth, their families, JJS facility staff, juvenile probation officers, community providers and natural supports.
- Establish the necessary linkages and partnerships with the full range of public and private sector agencies and natural supports.
- Support delivery of comprehensive services across multiple domains.
- Continue to promote thoughtful, responsive and creative “wraparound” services to meet the diverse needs of the young people and their families.
- Support youth leadership and advocacy development.

Youth may choose to continue with their Transition Services Coordinator beyond their supervised release period & until age 21

What does the Transition Services Coordinator do?

Transition Services Coordinators offer empowering client-centered support to youth and their family by facilitating their choice, access to and engagement with New Mexico’s system of care.

- Caseload Average: 10-15 youth
- Engages the youth and their family soon after admission to a CYFD facility
- Develops a helpful alliance with the youth and their family to identify and respond to needs
- Partners with youth, families, JJS facility staff, juvenile probation officers, and other team members in transition plan development
- Identifies and supports access to and engagement with community providers
- Administers emergency wraparound funds to support transition related needs

Family Inclusion

(Even if youth is not returning home to family)

- Collaboratively conducts Home Studies with JPO staff.
- Participates in Home Visits with families.
- Encourages family/youth participation and input at team meetings.
- Utilizes teleconferencing to increase family inclusion.

Our Valued Strategic Partners

- All CYFD Service Areas
- Behavioral Health Collaborative Partners
- Local Collaboratives
- Statewide Single Entity (OptumHealth New Mexico)
- Consumer and Family Advocacy Groups
- Community Providers
- Juvenile Justice Advisory Committee
- Faith-Based Organizations
- Volunteers
- Mentors
- Secondary Education Providers
- Law Enforcement
- Juvenile Public Safety Advisory Board