

New Mexico

Juvenile Justice Services

Fact Book

(Field Services Only)

Data Analysis Unit



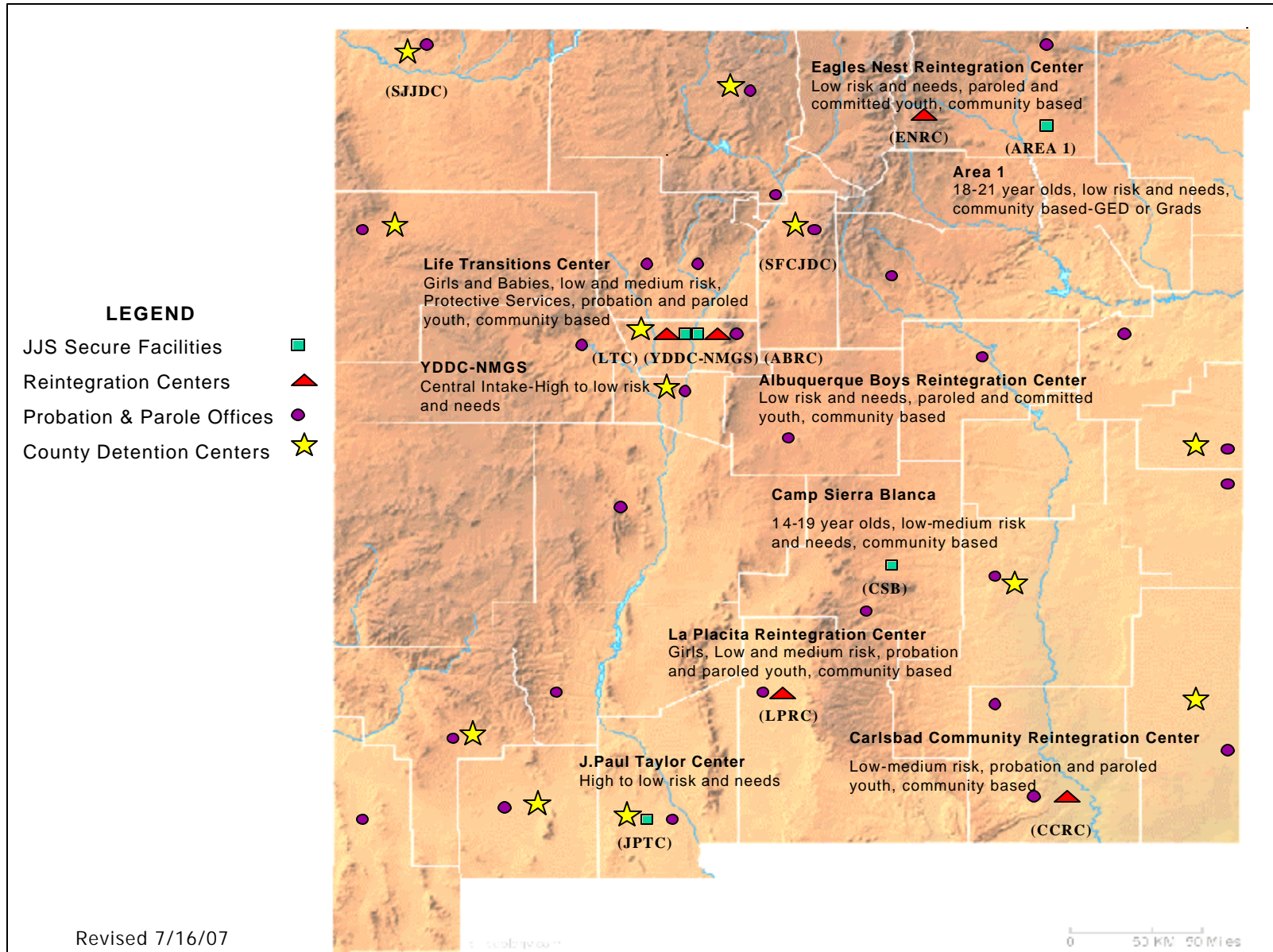
Fiscal Year 2007

Table of Contents

JJS FACILITIES AND DESCRIPTIONS.....	4
MONTHLY REFERRAL PROJECTIONS	5
REFERRALS BY ETHNICITY, BY COUNTY	6
REFERRALS BY AGE AND SEX, BY COUNTY.....	7
REFERRALS BY TYPE, BY REGION	8
JPPO PRELIMINARY INQUIRY DECISIONS.....	9
SEX OFFENSE COUNT AND PERCENT, BY COUNTY	10
OFFENSES REFERRED BY DEGREE, BY DISTRICT AND MOST SERIOUS SDM, BY COUNTY.....	11
OFFENSES REFERRED BY GENDER, BY REGION	12
FORMAL COURT DISPOSITIONS, BY ETHNICITY, AND BY GENDER	13
FORMAL COURT DISPOSITIONS, BY AGE, AND BY LENGTH OF COMMITMENT	14
CASE PROCESSING TIME - DISPOSITION TYPE AND FINDING OF DELINQUENCY OR NOT, BY AVERAGE DAYS	15
CASE PROCESSING TIME - TOP 15 OFFENSES, BY AVERAGE DAYS	16
CASE PROCESSING TIME – PETITION TYPE, BY AVERAGE DAYS	17
MONTHLY FIELD SUPERVISION BY TYPE.....	18
PAROLE AND PROBATION CASES BY SUPERVISION LEVEL (SNAPSHOT ON THE LAST DAY OF THE FISCAL YEAR)	19
PRE-DISPOSITION CASES FOR PRIMARY ASSIGNMENTS, BY ETHNICITY, BY COUNTY (SNAPSHOT ON THE LAST DAY OF THE FISCAL YEAR).....	20
PRE-DISPOSITION CASES FOR PRIMARY ASSIGNMENT, BY GENDER, BY REGION	21
PERCENTAGE OF TOP 15 OFFENSES BEING DETAINED AND NOT DETAINED, FY07.....	22
RAI REFERRALS SCREENED FOR DETENTION, BY SCORE LEVEL, BY OUTCOME.....	23
PERCENTAGE OF LOW AND MEDIUM SCORES OVERRIDDEN INTO DETENTION, BY GENDER, BY COUNTY	24
PERCENTAGE OF LOW SCORES OVERRIDDEN INTO DETENTION, BY ETHNICITY, BY COUNTY	25
PERCENTAGE OF MEDIUM SCORES OVERRIDDEN INTO DETENTION, BY ETHNICITY, BY COUNTY.....	26

PERCENTAGE OF LOW SCORES OVERRIDDEN INTO DETENTION, BY REASON, BY COUNTY..... 27
PERCENTAGE OF MEDIUM SCORES OVERRIDDEN INTO DETENTION, BY REASON, BY COUNTY..... 28
PERCENTAGE OF REASON FOR REFERRAL, BY WARRANT (COURT ORDERED HOLDS), BY REGION..... 29
PERCENTAGE OF REASON FOR REFERRAL, BY WARRANT (PROBATION VIOLATIONS), BY REGION 30

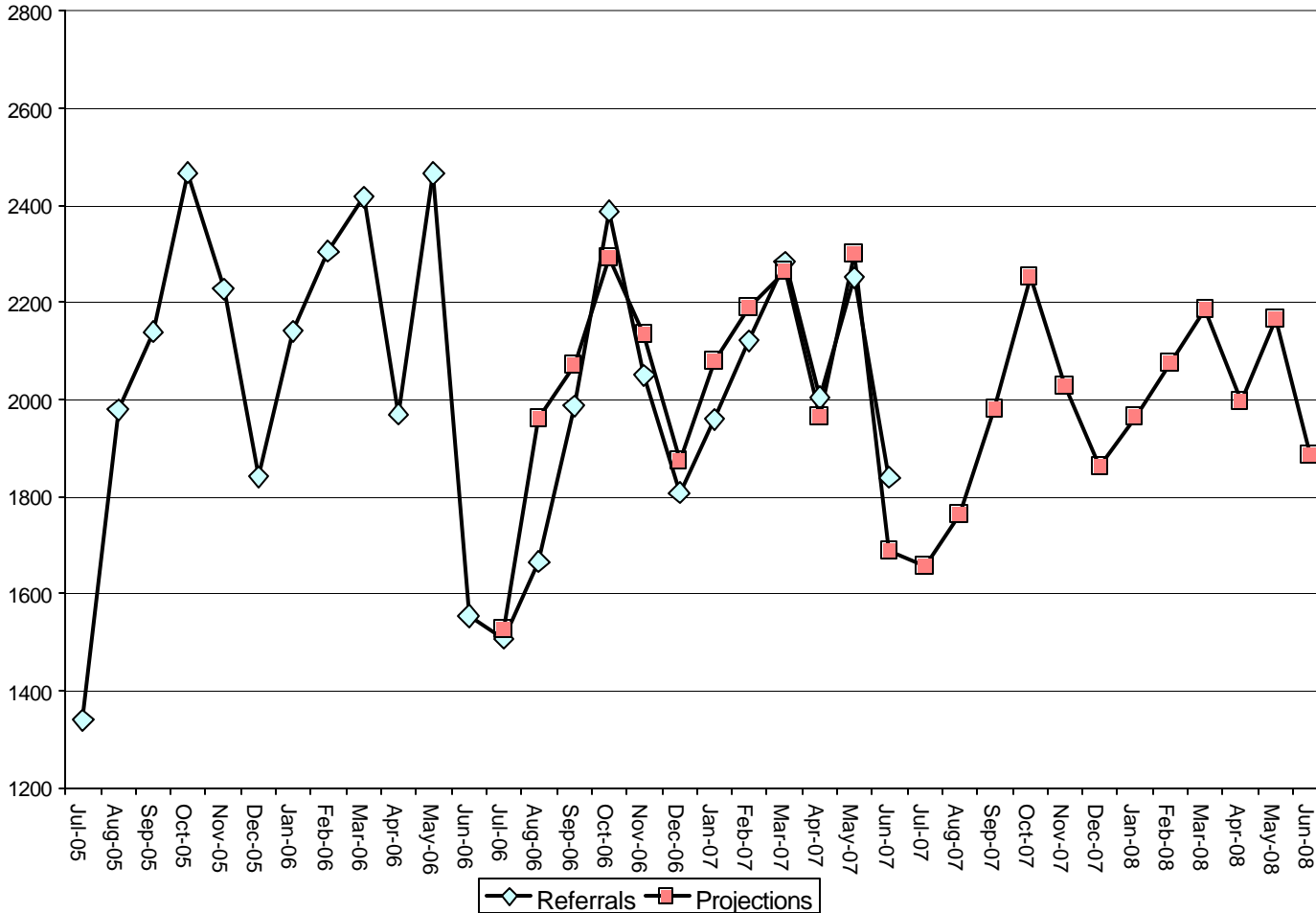
JJS Facilities and Descriptions



Source: JJS Facilities and Descriptions on Map

Monthly Referral Projections

JJS Referrals - Historical & 1 Year Projection



Time Period	Referrals	Projections
July-05	1340	
August-05	1980	
September-05	2139	
October-05	2467	
November-05	2228	
December-05	1841	
January-06	2141	
February-06	2305	
March-06	2417	
April-06	1969	
May-06	2466	
June-06	1554	
July-06	1507	1527
August-06	1666	1961
September-06	1988	2071
October-06	2388	2294
November-06	2051	2134
December-06	1807	1874
January-07	1959	2078
February-07	2121	2190
March-07	2283	2267
April-07	2004	1965
May-07	2252	2302
June-07	1840	1686
July-07		1656
August-07		1764
September-07		1982
October-07		2253
November-07		2026
December-07		1862
January-08		1965
February-08		2075
March-08		2185
April-08		1997
May-08		2165
June-08		1887

Source: FY05-07 Referrals

Referrals by Ethnicity, by County

Referrals by Ethnicity FY07								
County	2 or more	AI or AN	Asian	B or AA	Hispanic	NH or PI	White	Total
Rio Arriba	5	4			436		27	484
Los Alamos		1		4	22		91	118
Santa Fe	7	31		4	824	2	192	1066
Bernalillo	131	325	29	316	4543	4	1742	7199
Dona Ana	32	17	1	36	2415	3	514	3040
Guadalupe	2	4		1	101		10	119
Mora	1				46		5	52
San Miguel	1			4	423		31	461
Lea	13	4		72	667		247	1015
Grant		1		2	226		70	301
Hidalgo		1			30		14	45
Luna	1	2		4	230		40	278
Sierra		1		3	59		66	145
Catron		1			14		7	22
Socorro	2	4		1	268		31	309
Torrance	3	3		5	99		106	235
Colfax					150		38	189
Union					45		17	62
Taos	5	16		1	348		63	435
Curry	12	1		114	462	2	230	827
Roosevelt		3		4	117		58	187
Quay				6	90		40	137
De Baca					4			4
Harding					2			2
McKinley	12	336		6	108	1	35	508
San Juan	32	456	1	9	353		350	1238
Lincoln	6	31			91		135	263
Otero	7	18	6	95	521	4	346	997
Cibola	2	66	1		137		45	255
Sandoval	24	80	3	47	551		527	1249
Valencia	12	9		12	481		159	674
Chaves	4	4		24	739		269	1043
Eddy	4	6		13	567	1	305	907
Total	318	1425	41	783	15169	17	5810	23866
AI or AN - American Indian or Alaskan Native, B or AA - Black or African American, NH or PI - Native Hawaiian or other Pacific Islander								

¹From FY06 to FY07 the number of referrals received decreased for all ethnic groups except Native Hawaiian/Pacific Islander and Missing.

Source: FY07 Referrals

¹ The counts may not sum to the total because referrals with missing ethnicity were not included in the chart. 1.3% of referrals in fiscal year 2007 were missing ethnicities.

Referrals by Age and Sex, by County

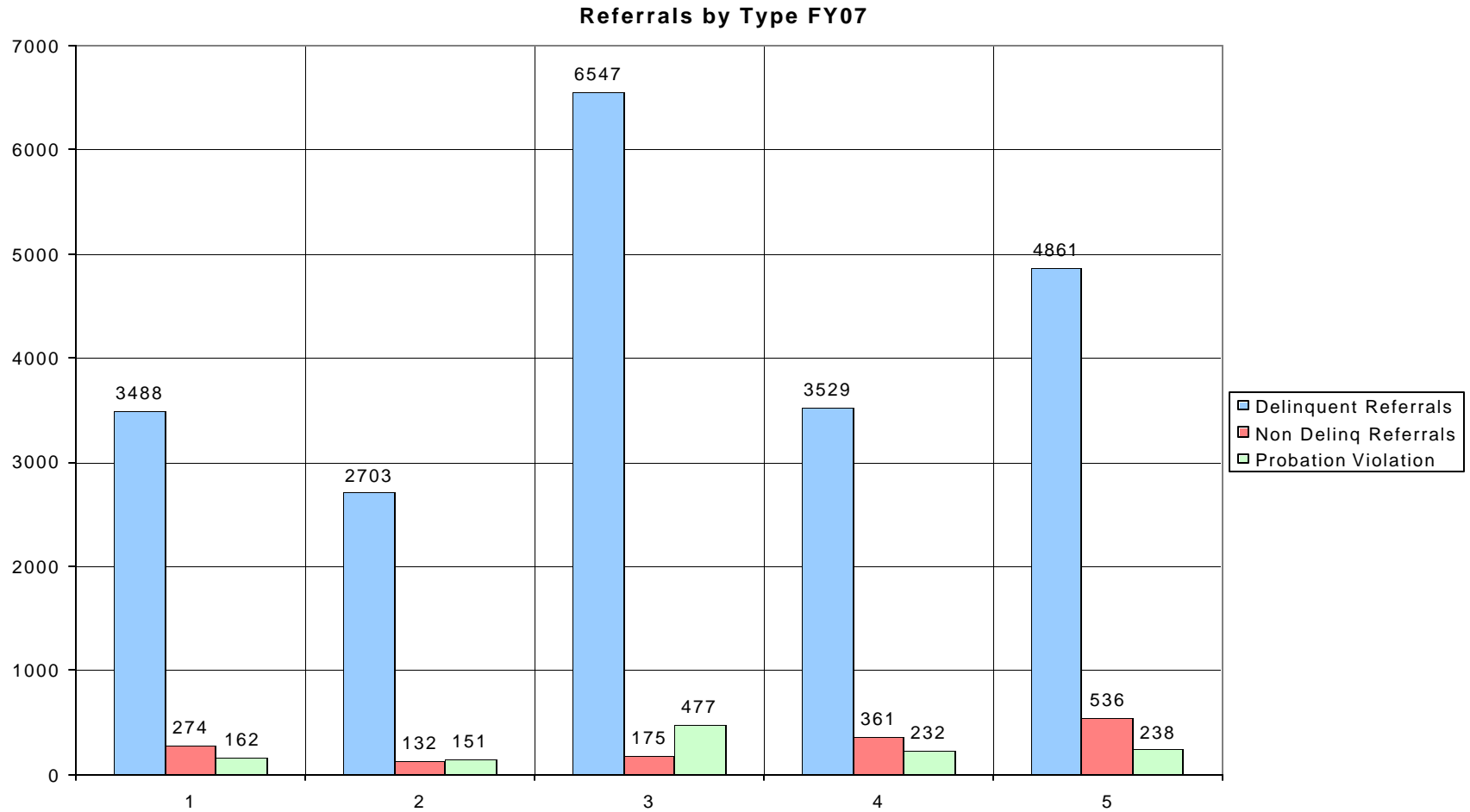
Referrals by Age (10-17) FY07										Referrals by Sex FY07			
County	10	11	12	13	14	15	16	17	Total	County	Female	Male	Total
Rio Arriba	2	2	17	44	60	90	140	117	484	Rio Arriba	128	351	484
Los Alamos		2	2	4	6	24	31	49	118	Los Alamos	30	87	117
Santa Fe	6	6	26	90	152	236	257	271	1066	Santa Fe	289	770	1065
Bernalillo	59	134	299	511	947	1361	1774	1916	7199	Bernalillo	2253	4895	7183
Dona Ana	20	64	185	375	482	644	654	551	3039	Dona Ana	917	2109	3038
Guadalupe	4	4	2	4	10	25	34	27	119	Guadalupe	59	59	119
Mora	1			2	7	10	12	20	52	Mora	6	46	52
San Miguel	4	4	9	31	61	103	114	125	461	San Miguel	147	308	461
Lea	6	12	46	59	158	199	268	256	1015	Lea	325	686	1015
Grant	4	4	17	15	46	68	63	78	301	Grant	84	216	301
Hidalgo	2	1	5	6	11	3	5	10	45	Hidalgo	11	34	45
Luna	6	4	15	25	38	46	74	59	278	Luna	83	194	278
Sierra	1	1	7	24	22	21	29	36	145	Sierra	42	101	144
Catron		2		5	8	3	4		22	Catron	2	20	22
Socorro	6	14	14	15	33	61	80	71	309	Socorro	100	207	307
Torrance	3	5	12	15	34	39	70	49	235	Torrance	53	181	234
Colfax	2	4	8	9	28	48	47	39	189	Colfax	51	138	189
Union		1		1	9	7	12	30	62	Union	16	46	62
Taos	5	9	10	31	78	89	99	94	435	Taos	152	280	435
Curry	5	11	37	98	143	162	146	207	827	Curry	229	593	826
Roosevelt		1	10	38	27	32	40	36	187	Roosevelt	59	126	187
Quay		1		3	12	29	42	49	137	Quay	20	117	137
De Baca							3	1	4	De Baca	2	2	4
Harding							1	1	2	Harding	2		2
McKinley	7	12	15	44	68	112	123	117	508	Mckinley	175	332	507
San Juan	17	15	47	92	221	249	283	283	1238	San Juan	401	822	1230
Lincoln	1	4	16	36	36	50	54	63	263	Lincoln	93	170	263
Otero	14	33	55	90	174	206	197	201	997	Otero	320	675	996
Cibola	4	1	10	22	39	32	57	85	255	Cibola	83	172	255
Sandoval	9	17	53	100	197	235	256	361	1249	Sandoval	293	953	1249
Valencia	13	24	24	67	117	122	160	130	674	Valencia	194	479	674
Chaves	3	6	77	85	192	204	231	236	1043	Chaves	314	698	1041
Eddy	2	26	55	74	140	156	207	237	907	Eddy	256	651	907
Total	206	424	1073	2015	3556	4666	5567	5805	23865	Total	7189	16518	23829

²From fiscal year 06 to fiscal year 07 the total number of referrals for males & females decreased by 570 and 297 respectively.

Source: FY07 Referrals

² Note: In the table on the right the sum of male and female clients may not equal the total because referral counts for clients with an unknown gender were excluded. These referrals accounted for less than 1.0% of the total. In the table entitled "Referrals by age (10-17) FY07" referral counts were excluded for clients whose age was less than 10 or greater than 17. However, the totals include the counts for all age groups.

Referrals by Type, by Region



Across all regions delinquent referrals made up approximately 88.5%, non-delinquent referrals 6.2%, and probation violations 5.3% of the total number of referrals that were received.

Source: FY07 Referrals

JPPO Preliminary Inquiry Decisions

JPPO Decision by County FY07				
Referral County	Handle Informally		Refer to CCA	
	#	%	#	%
Rio Arriba	220	44.7%	272	55.3%
Los Alamos	76	63.3%	44	36.7%
Santa Fe	571	52.1%	524	47.9%
Bernalillo	3254	47.6%	3586	52.4%
Dona Ana	1800	61.2%	1140	38.8%
Guadalupe	80	66.7%	40	33.3%
Mora	24	46.2%	28	53.8%
San Miguel	254	55.9%	200	44.1%
Lea	543	54.0%	462	46.0%
Grant	151	56.3%	117	43.7%
Hidalgo	28	56.0%	22	44.0%
Luna	167	62.8%	99	37.2%
Sierra	67	50.0%	67	50.0%
Catron	8	30.8%	18	69.2%
Socorro	124	39.7%	188	60.3%
Torrance	137	61.4%	86	38.6%
Colfax	112	58.9%	78	41.1%
Union	27	39.7%	41	60.3%
Taos	224	50.5%	220	49.5%
Curry	432	53.5%	376	46.5%
Roosevelt	97	51.3%	92	48.7%
Quay	69	51.5%	65	48.5%
De Baca	4	100.0%		0.0%
Harding	2	100.0%		0.0%
McKinley	312	58.6%	220	41.4%
San Juan	682	54.7%	564	45.3%
Lincoln	156	60.2%	103	39.8%
Otero	541	54.7%	448	45.3%
Cibola	114	53.0%	101	47.0%
Sandoval	550	45.9%	648	54.1%
Valencia	367	54.0%	313	46.0%
Chaves	679	65.0%	366	35.0%
Eddy	609	67.4%	295	32.6%
Total	12481	53.6%	10823	46.4%

Source: FY07 JPPO PI Decisions

Sex Offense Count and Percent, by County

Sex Offenses by County FY07			
County	No	Yes	% of So's
Rio Arriba	871	1	0.1%
Los Alamos	167	2	1.2%
Santa Fe	1699	6	0.4%
Bernalillo	11444	59	0.5%
Dona Ana	4690	10	0.2%
Guadalupe	179		
Mora	69		
San Miguel	658	4	0.6%
Lea	1263	1	0.1%
Grant	456		
Hidalgo	66		
Luna	461	1	0.2%
Sierra	201		
Catron	30		
Socorro	526	4	0.8%
Torrance	358		
Colfax	260		
Union	114	4	3.4%
Taos	608		
Curry	1153	8	0.7%
Roosevelt	300	3	1.0%
Quay	237	1	0.4%
De Baca	4		
Harding	8		
McKinley	738	3	0.4%
San Juan	1805	21	1.2%
Lincoln	430		
Otero	1497	2	0.1%
Cibola	444		
Sandoval	1811	7	0.4%
Valencia	1119	6	0.5%
Chaves	1422	5	0.4%
Eddy	1331	6	0.4%
Total	36419	154	0.4%

During last fiscal year there were 288 total sex offenses statewide.

Offenses Referred by Degree, by District and Most Serious SDM, by County

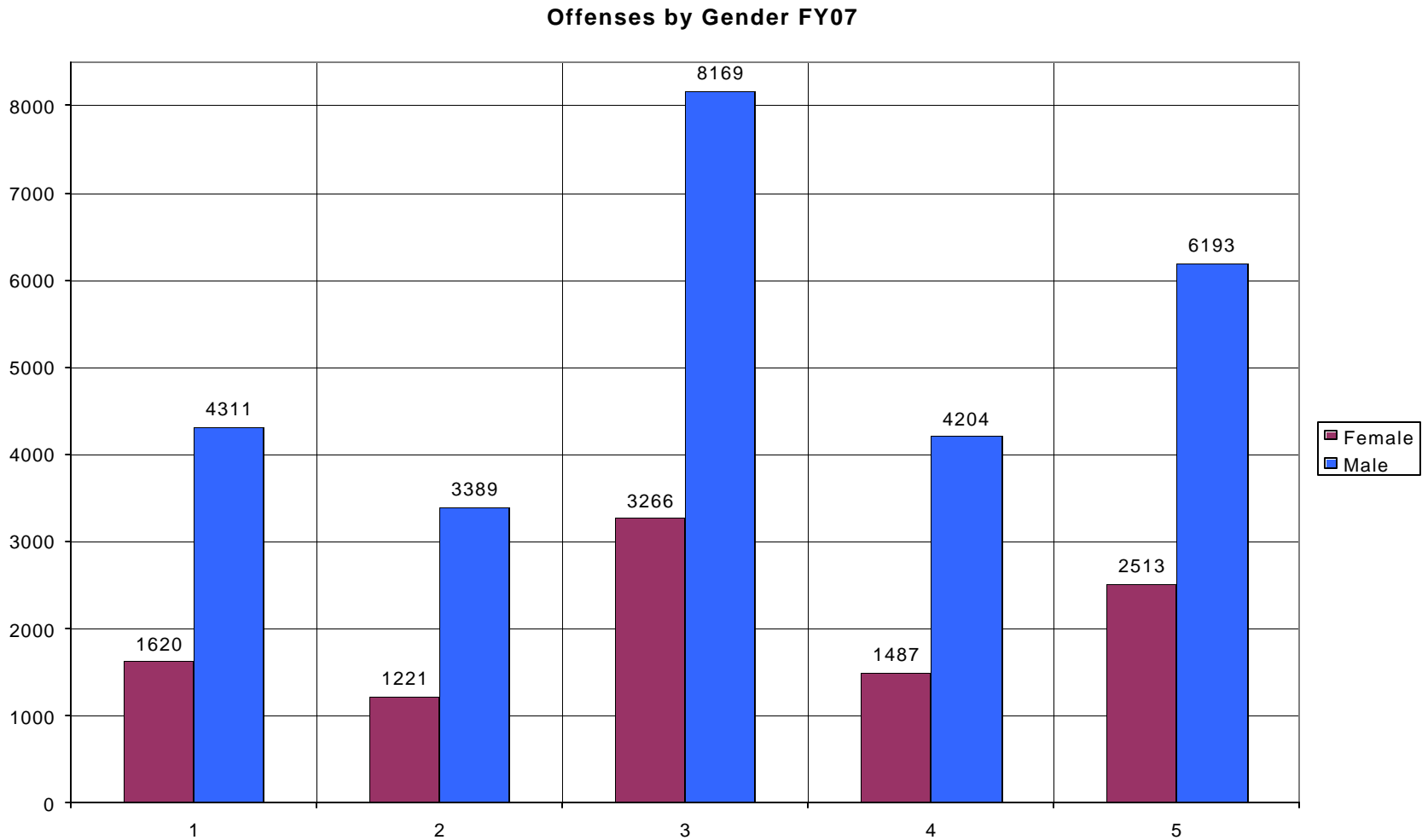
Offenses by Degree FY07						
District	City Ordinance	Felony	Misdemeanor	Probation Violation	Status Offense	Total
1	15	538	1997	187	9	2746
2	564	2052	7434	1430	23	11503
3	32	701	3013	258	696	4700
4	13	120	667	81	29	910
5	1	187	757	59	260	1264
6	2	303	656	23		984
7	2	209	681	150	77	1119
8	4	155	602	127	98	986
9		211	956	253	44	1464
10		47	175	18	10	250
11	1	530	1664	109	263	2567
12	5	348	1263	170	143	1929
13	32	769	2179	320	87	3387
14	11	228	2164	294	67	2764
Total	682	6398	24208	3479	1806	36573

Offenses by Most Serious SDM Category FY07						
County	Assaultive	Drugs	Other	Property	Weapon	Total
Rio Arriba	247	228	210	174	13	872
Los Alamos	21	88	25	33	2	169
Santa Fe	306	560	387	404	48	1705
Bernalillo	2304	1770	4302	2811	316	11503
Dona Ana	987	881	1695	1002	135	4700
Guadalupe	20	47	101	8	3	179
Mora	22	30	10	6	1	69
San Miguel	132	246	159	111	14	662
Lea	225	230	503	274	32	1264
Grant	87	142	52	155	20	456
Hidalgo	22	8	14	21	1	66
Luna	73	109	143	131	6	462
Sierra	54	53	44	45	5	201
Catron	1	6	6	16	1	30
Socorro	133	99	219	74	5	530
Torrance	60	93	112	89	4	358
Colfax	66	58	69	61	6	260
Union	28	34	42	12	2	118
Taos	115	141	253	86	13	608
Curry	296	150	403	289	23	1161
Roosevelt	66	68	116	48	5	303
Quay	37	62	66	64	9	238
De Baca		1		3		4
Harding		8				8
McKinley	128	244	181	177	11	741
San Juan	393	402	568	412	51	1826
Lincoln	71	99	145	112	3	430
Otero	255	315	448	418	63	1499
Cibola	87	73	213	54	17	444
Sandoval	409	549	430	359	71	1818
Valencia	329	213	244	274	65	1125
Chaves	322	369	440	244	52	1427
Eddy	262	472	347	237	19	1337
Total	7558	7848	11947	8204	1016	36573

The “Offenses by Degree FY07” table shows that district 2 had the highest number of referred offenses in each category except for Status Offenses.

Source: FY07 Charges

Offenses Referred by Gender, by Region



³Across all regions males made up approximately 71.8% and females 27.6% of the total number of referred offenses during this quarter.

³ Above graph does not include counts for referred offenses when the individual's gender was unknown. The unknown gender category accounted for less than one percent of the total.

Formal Court Dispositions, by Ethnicity, and by Gender

Disposition Type by Gender FY07			
Disposition	Female	Male	Total
Adult Sanctions - DOC Facility		11	11
Adult Sanctions – DOC Probation		3	3
Adult Sanctions – Jail		6	6
Adult Sanctions - Prob. and Incarc.		3	3
Affirmed		6	6
Consent Decree	499	1545	2048
Dismissed	184	764	950
Judgment - CYFD Commitment	29	199	228
Judgment – Detention	30	186	216
Judgment – Fines		6	6
Judgment Probation	370	1480	1854
Nolle Prosequi or Time Expired	117	365	482
Time Waiver	270	672	943
YO Judgment – CYFD Commitment		2	2
YO Judgment - Detention	1	4	5
YO Judgment - Probation		3	3
Total	1500	5255	6766

⁴Of all the dispositions Consent Decree was the most common for both males and females. Consent Decree accounted for approximately 33% of the female and 29% of the male dispositions.

Disposition	Disposition Type by Ethnicity							Total
	2 or more	AI or AN	Asian	B or AA	Hispanic	NH or PI	White	
Adult Sanctions - DOC Facility		1		1	7		2	11
Adult Sanctions - DOC Probation					2		1	3
Adult Sanctions - Jail					3		3	6
Adult Sanctions - Prob. and Incarc.					2		1	3
Affirmed		1			1		4	6
Consent Decree	27	89	6	83	1315	3	501	2048
Dismissed	23	44	1	49	637		191	950
Judgment - CYFD Commitment	5	16		10	158		36	228
Judgment - Detention	1	23		8	146		38	216
Judgment - Fines		3			2		1	6
Judgment Probation	24	155	4	64	1226	2	360	1854
Nolle Prosequi or Time Expired	5	61	2	18	288	1	105	482
Time Waiver	14	46	2	40	576		251	943
YO Judgment - CYFD Commitment					1			2
YO Judgment - Detention					5			5
YO Judgment - Probation					3			3
Total	99	439	15	273	4372	6	1494	6766

AI or AN - American Indian or Alaskan Native, B or AA - Black or African American, NH or PI - Native Hawaiian or other Pacific Islander

⁵In the chart entitled “Disposition Type by Ethnicity” there were more dispositions for Hispanics than all other ethnicities combined.

⁴ Note that the counts for males and females, when added together, may not sum to the total. This is because dispositions for individuals with missing genders are never included in the chart.

Formal Court Dispositions, by Age, and by Length of Commitment

Disposition	Disposition Type by Length				
	Up To 15 Days	Up to 6 Months	Up to 1 Yr.	Up to 2 Yrs.	Up to age 21
Consent Decree	1	1311	731	1	4
Judgment - CYFD Commitment	13		123	85	7
Judgment - Detention	216				
Judgment Probation	5	32	850	959	8
YO Judgment - CYFD Commitment	1				1
YO Judgment - Detention	5				
YO Judgment - Probation				3	
Total	241	1343	1704	1048	20

Across all the dispositions that were made in FY07 the most common commitment length was up to one year. Of the categories listed in the table this commitment length was given 39.1% of the time.

Disposition	Disposition by Age (10-17) FY07								
	10	11	12	13	14	15	16	17	Total
Adult Sanctions - DOC Facility							1	2	11
Adult Sanctions - DOC Probation								1	3
Adult Sanctions - Jail								1	6
Adult Sanctions - Prob. and Incarc.								1	3
Affirmed							3	1	6
Consent Decree	1	8	37	108	283	377	539	555	2048
Dismissed	4	3	12	40	78	140	224	271	950
Judgment - CYFD Commitment				5	12	32	60	69	228
Judgment - Detention						5	13	60	216
Judgment - Fines					1		2	1	6
Judgment Probation	2	6	23	81	195	337	491	552	1854
Nolle Prosequi or Time Expired	5	5	7	15	50	73	106	119	482
Time Waiver	3	17	38	80	121	145	219	197	943
YO Judgment - CYFD Commitment									2
YO Judgment - Detention						1			5
YO Judgment - Probation							1	1	3
Total	15	39	117	329	740	1110	1659	1831	6766

⁶Juveniles age 15, 16, and 17 had the most dispositions by age. Clients in this age range accounted for 68.0% of the total number of dispositions.

⁵ The counts may not sum to the total because dispositions for individuals with missing ethnicities were not included in the chart. They account for approximately 1.0% of the total.

⁶ Note: A disposition for clients whose age was less than 10 or greater than 17 were excluded from the counts. Therefore, when the rows are summed they may not equal the total.

Case Processing Time - Disposition Type and Finding of Delinquency or Not, by Average Days

Disposition Type by Average Days FY07				
Disposition	Avg Days Inc To Ref	Avg Days Ref to JPPO Dec	Avg Days JPPO Dec to Filed	Avg Days Filed to Disp
Adult Sanctions - DOC Facility	148	2	35	549
Adult Sanctions - DOC Probation	36	0	17	351
Adult Sanctions - Jail	9	2	40	432
Adult Sanctions - Prob. and Incarc.	2	1	1	188
Affirmed	41	2	9	296
Consent Decree	18	15	31	74
Dismissed	20	15	29	132
Judgment - CYFD Commitment	25	4	13	96
Judgment - Detention	42	10	29	129
Judgment - Fines	19	22	26	72
Judgment - Probation	21	9	18	95
Judgment Probation	19	1	8	87
Nolle Prosequi or Time Expired	26	20	40	166
Time Waiver	23	25	40	98
YO Judgment - CYFD Commitment	38		6	290
YO Judgment - Detention	111	11	62	58
YO Judgment - Probation	3	1	35	264
Overall Average	22	14	28	100

Finding of Delinquency or Not by Average Days FY07				
Charge Disp	Avg Days Inc To Ref	Avg Days Ref to JPPO Dec	Avg Days JPPO Dec to Filed	Avg Days Filed to Disp
Dismissed	20	15	29	109
Admitted	20	11	24	80
No Contest	28	12	23	97
Pending	27	25	41	98
Found to Have Committed	26	9	23	177
Found to Have Not Committed	26	10	29	173
Overall Average	22	14	28	100

<p>Avg Days Inc Ref – Average number of days from the incident to the referral. Avg Days Ref to JPPO Dec – Average number of days from the referral to the JPPO decision. Avg Days JPPO Dec to Filed – Average number of days from the JPPO decision to when the petition is filed. Avg Days Filed to Disp – Average number of days from the petition being filed to the disposition.</p>
--

Case Processing Time - Top 15 Offenses, by Average Days

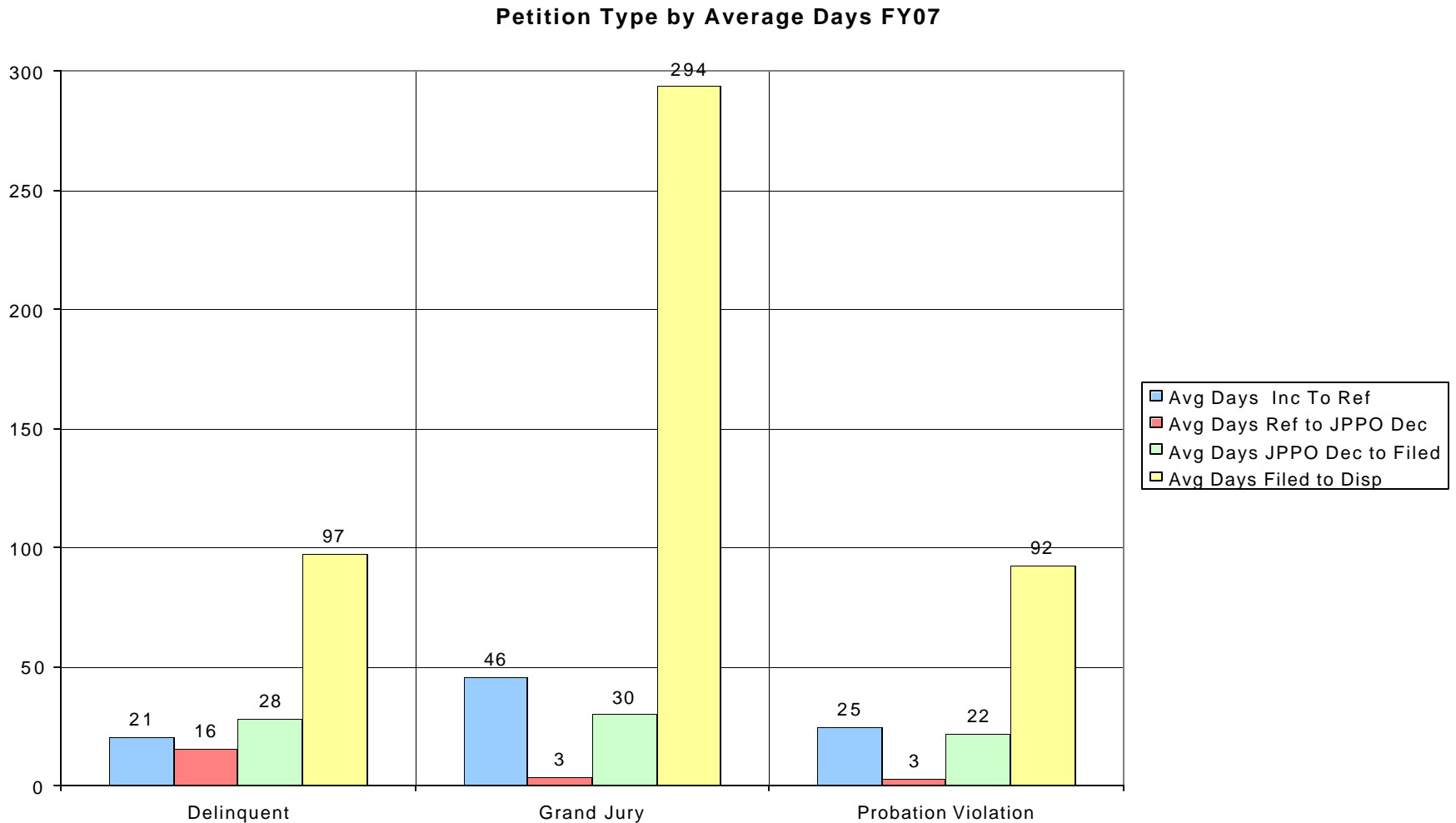
Top 15 Offenses by Average Days FY07				
Offense	Avg Days Inc To Ref	Avg Days Ref to JPPO Dec	Avg Days JPPO Dec to Filed	Avg Days Filed to Disp
Probation Violation	25	3	21	82
Possession of Marijuana (One Ounce or Less)	12	23	41	99
Criminal Damage to Property	18	17	30	100
Resisting, Evading or Obstructing an Officer	7	12	19	102
Possession of Alcoholic Beverages by a Minor	16	18	33	96
Battery	20	19	31	106
Use or Possession of Drug Paraphernalia	11	21	35	85
Unlawful Carrying of a Deadly Weapon on School Premises	16	20	33	91
Battery (Household Member)	11	10	21	76
Disorderly Conduct	11	17	27	112
Driving Under the Influence of Liquor or Drugs (1st Offense)	9	12	24	81
Tampering with Evidence	11	14	25	125
Burglary (Dwelling House)	23	14	35	106
Aggravated Assault (Deadly Weapon)	18	10	20	128
Shoplifting (\$250 or less)	10	22	33	62
Overall Average	18	12	26	92

From the time the incident occurred to the date of disposition, on average, an individual with Burglary (Dwelling House) had to wait the longest amount of time while someone charged with Battery (Household Member) had to wait the shortest. On average it took 61 more days to get through the major decision points for someone charged with Burglary (Dwelling House) rather than Battery (Household Member).

Note: The counts in the table above only include those cases in which a formal disposition occurred.

Avg Days Inc Ref – Average number of days from the incident to the referral.
 Avg Days Ref to JPPO Dec – Average number of days from the referral to the JPPO decision.
 Avg Days JPPO Dec to Filed – Average number of days from the JPPO decision to when the petition is filed.
 Avg Days Filed to Disp – Average number of days from the petition being filed to the disposition.

Case Processing Time – Petition Type, by Average Days



Note: The counts in the graph only include those cases in which a formal disposition occurred.

Source: FY07 Disp Charges-Case Processing

Avg Days Inc Ref – Average number of days from the incident to the referral.
 Avg Days Ref to JPPO Dec – Average number of days from the referral to the JPPO decision.
 Avg Days JPPO Dec to Filed – Average number of days from the JPPO decision to when the petition is filed.
 Avg Days Filed to Disp – Average number of days from the petition being filed to the disposition.

Monthly Field Supervision by Type

Field Supervision by Type (Last Day of the Month)												
	Jul, 06	Aug, 06	Sept, 06	Oct, 06	Nov, 06	Dec, 06	Jan, 07	Feb, 07	Mar, 07	Apr, 07	May, 07	Jun, 07
Conditional Release	175	180	182	151	171	162	181	168	193	197	183	175
Interstate Compact Parole	10	11	13	14	13	12	14	15	13	11	10	10
Interstate Compact Probation	48	56	56	62	72	68	69	74	74	67	61	53
Informal Conditions	634	571	640	660	777	715	775	816	888	898	948	904
Informal Supervision	115	96	80	95	118	117	134	129	144	155	167	156
Parole	74	59	53	53	59	62	57	54	55	49	50	51
Parole After Discharge	0	1	1	1	1	0	0	0	0	0	0	0
Pre-Parole Release	0	0	0	0	0	0	0	0	0	0	1	0
Probation Male	2144	2137	2045	2100	2052	1990	1989	1965	1904	1914	1919	1878
Probation Female	573	565	543	565	541	533	543	535	519	517	542	532
Time Waiver	<u>480</u>	<u>495</u>	<u>496</u>	<u>473</u>	<u>481</u>	<u>476</u>	<u>403</u>	<u>412</u>	<u>415</u>	<u>418</u>	<u>444</u>	<u>442</u>
Total Count Supervision Type	4253	4171	4109	4174	4285	4152	4165	4168	4205	4226	4325	4201

Source: JJS Desktop Report

Probation – JPPO will supervise a client found to have committed a delinquent offense and ordered supervision by the court. The client may be supervised several times a day down to once a month. The court order may be a consent decree, judgment or Youthful Offender.

Interstate Compact Probation – Interstate agreement in which a probation client from another state is supervised by one of our JPPO officers.

Time Waiver – An agreement between the public defender and the District Attorney’s Office that the client will not incur another referral for six months. The JPPO monitors any conditions associated with the agreement.

Conditional Release – JPPO supervises and monitors court-ordered conditions for a client who has been released from detention.

Informal Supervision – JPPO supervises a client handled informally through contact with the client at least once each month. This client is more at risk of re-offending than a client on informal conditions and needs additional supervision.

Informal Conditions – JPPO monitors progress of conditions a client handled informally who is required to complete specific tasks given by the JPPO.

Parole – Supervision by JPPOs for clients that have been paroled from a juvenile facility by the Juvenile Parole Board.

Interstate Compact Parole – Interstate agreement in which a parole client from another state is supervised by one of our JPPO offices.

Pre-Parole Release – Client is released from a facility on a “furlough” or pass.

Parole After Discharge – 90 day mandatory parole after client has completed their commitment.

Interstate Compact Parole – Interstate agreement in which a parole client from another state is supervised by one of our JPPO offices.

Parole and Probation Cases by Supervision Level (Snapshot on the Last Day of the Fiscal Year)

Parole and Probation Cases by Supervision Level									
County	ICJ Out	Inactive	Intensive	Maximum	Medium	Minimum	Monitoring	Warrant	Total
RIO ARRIBA		1	11	55	42	10	4	2	125
SANTA FE		3	16	53	44	11	1	3	131
BERNALILLO	76	93	187	466	393	143	81	122	1561
DONA ANA	10	8	63	102	195	73	8	31	490
GUADALUPE			1	5	10				16
SAN MIGUEL LEA		2	7	20	51	10	1		91
GRANT	1		2	18	41	20	4	11	97
HIDALGO	1		8	7	28	4	1		49
LUNA	2		5	9	4	5			25
SIERRA	2		6	5	9	2		2	26
SOCORRO		1	2	5	13	1	1	2	25
TORRANCE	2	4	25	43	46	12	1	5	138
COLFAX								1	1
UNION	1		3	12	26	12	1		55
TAOS			1	2	8	4			15
CURRY	1	1	17	36	20	10		8	93
ROOSEVELT	3	4	25	61	54	28	2	13	190
QUAY	1		1	6	17	7	2	8	42
MCKINLEY			5	11	10	4	1		31
SAN JUAN	2		4	14	21	5	2	4	52
LINCOLN	4	2	41	66	67	18	4	7	209
OTERO	2		7	16	26	5	2	9	67
CIBOLA	7		21	67	87	33	12	11	238
SANDOVAL			5	12	24	6		6	53
VALENCIA		9	14	56	82	38	1	7	207
CHAVES		5	10	22	45	18	1	19	120
EDDY			14	49	36	17	3	6	125
Total	116	133	527	1264	1442	526	138	277	4423

⁷For each supervision level listed Bernalillo County had the most parole and probation cases. Across all supervision levels Bernalillo County had slightly over 35% of all the clients who were on parole or probation statewide on the last day of the fiscal year.

Source: CbyW 6-30-07 Extract 1

⁷ The chart includes clients whose status is ICJ Parole, Parole, ICJ Probation, Probation Courtesy, or Probation.

Pre-Disposition Cases for Primary Assignments, by Ethnicity, by County (Snapshot on the Last Day of the Fiscal Year)

JJD Pre-Disposition Cases for Primary Assignments								
County	2 or more	AI or AN	Asian	B or AA	Hispanic	NH or PI	White	Total
RIO ARRIBA		1			66		3	74
SANTA FE	1			3	94		44	144
BERNALILLO	31	84	9	60	1056	2	397	1779
DONA ANA	6	1		8	666		132	836
GUADALUPE		1			8			10
SAN MIGUEL LEA	1			10	43 92		5 30	50 141
GRANT					31		15	46
HIDALGO					3		1	4
LUNA					11		3	14
SIERRA					7		11	21
SOCORRO		4			40		8	67
COLFAX					12		4	17
UNION					14		4	19
TAOS	1	1			32		8	43
CURRY	1			16	56		29	107
ROOSEVELT					15		7	24
QUAY				1	10		5	16
MCKINLEY	5	85		1	38		17	157
SAN JUAN	2	38		2	30		15	107
LINCOLN		3			17		18	38
OTERO		2		8	53		27	90
CIBOLA		17			27		11	56
SANDOVAL	7	25	3	14	127		121	316
VALENCIA		2		1	78		30	116
CHAVES		1		1	61		25	92
EDDY		1		2	33		20	59
Total	55	266	12	127	2720	2	990	4443
AI or AN - American Indian or Alaskan Native, B or AA - Black or African American, NH or PI - Native Hawaiian or other Pacific Islander								

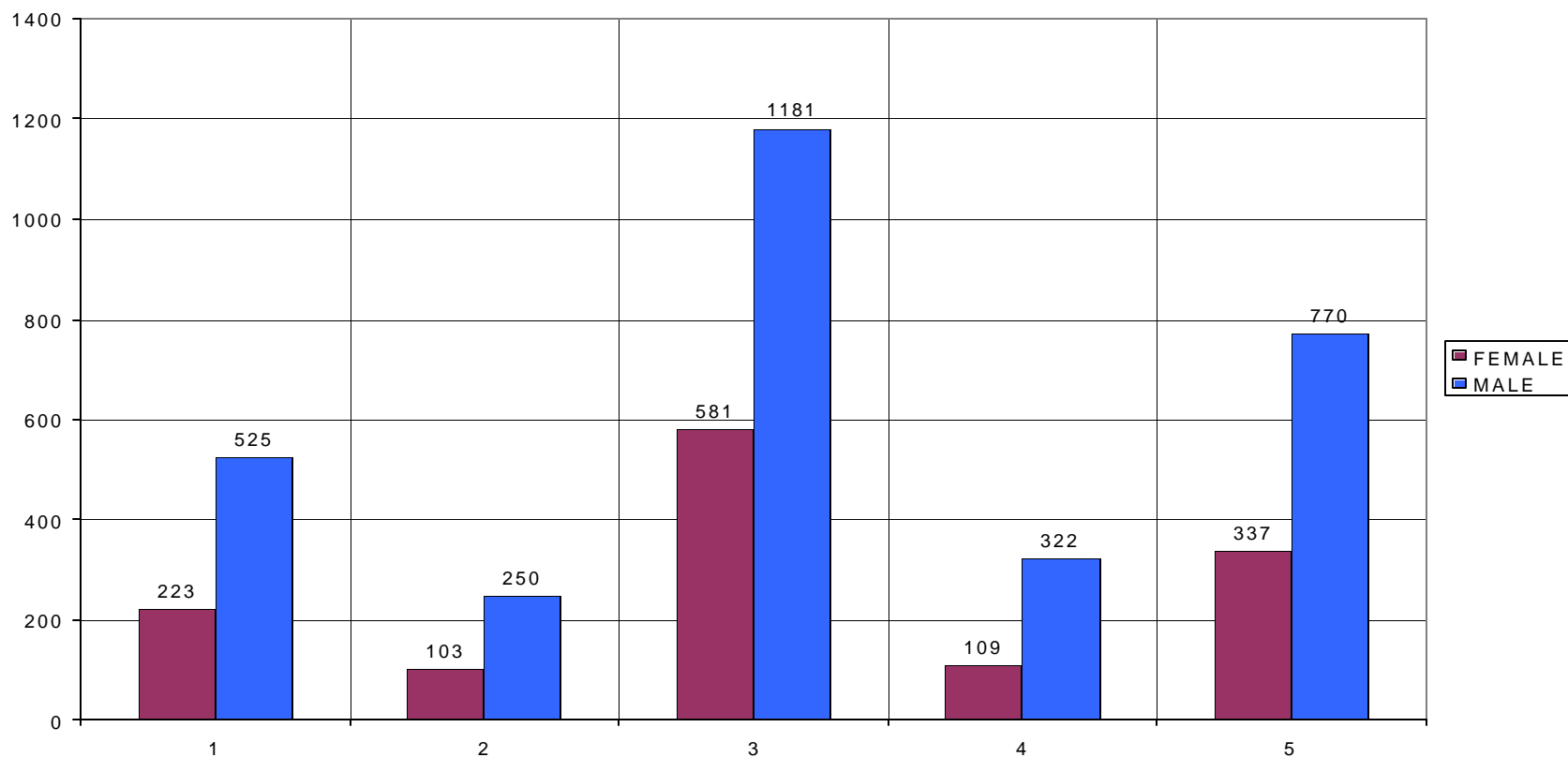
⁸Hispanics and Whites had the highest counts. These two ethnic groups comprise 83.5% of the total number of predisposition-cases statewide.

Source: CbyW 6-30-07 Extract 1

⁸ Pre-dispsotion counts for individuals with missing ethnicity were not included in the chart. Therefore, the counts may not always sum to the total. There was a total of 6.1% of cases that were missing ethnicity.

Pre-Disposition Cases for Primary Assignment, by Gender, by Region

JJD Pre-Disposition Cases for Primary Assignments Snapshot 6/30/07



⁹Across all regions males made up approximately 68.6% and females 30.5% of the total number of pre-disposition cases on the last day of the fiscal year.

Source: CbyW 6-30-07 Extract 1

⁹ In the graph above pre-disposition counts for individuals with missing gender were not included. Less than 1% of cases were missing gender.

Percentage of Top 15 Offenses Being Detained and Not Detained, FY07

Top 15 Offenses Being Detained and Not Detained (FY07)					
Referred Offense	Detain #	Detain %	Do Not Detain #	Do Not Detain %	Total
Probation Violation	831	99.0%	8	1.0%	839
Battery (Household Member)	147	46.4%	170	53.6%	317
Resisting, Evading or Obstructing an Officer	71	38.2%	115	61.8%	186
Possession of Alcoholic Beverages by a Minor	41	30.4%	94	69.6%	135
Possession of Marijuana (One Ounce or Less)	14	11.5%	108	88.5%	122
Battery	24	22.0%	85	78.0%	109
Shoplifting (\$250 or less)	23	23.5%	75	76.5%	98
Driving Under the Influence of Liquor or Drugs (1st Offense)	24	27.9%	62	72.1%	86
Burglary (Dwelling House)	44	54.3%	37	45.7%	81
Aggravated Assault (Deadly Weapon)	64	90.1%	7	9.9%	71
Unlawful Carrying of a Deadly Weapon on School Premises	30	44.1%	38	55.9%	68
Battery Upon a Peace Officer	51	76.1%	16	23.9%	67
Burglary (Commercial)	19	32.2%	40	67.8%	59
Unlawful Taking of a Motor Vehicle	33	58.9%	23	41.1%	56
Aggravated Battery (Deadly Weapon)	53	98.1%	1	1.9%	54
Total	1469	62.6%	879	37.4%	2348

Source: FY07 RAI Intakes

RAI Referrals Screened for Detention, by Score Level, by Outcome

RAI Referrals Screened for Detention Decision by Score Level and Outcome (FY07)									
County	High Score		Low Score			Med Score			Total
	Detain	Do Not Detain	Detain	Do Not Detain	Non-Secure Detention	Detain	Do Not Detain	Non-Secure Detention	
RIO ARRIBA	23	1	11	67	1	4	3	2	112
LOS ALAMOS				1					1
SANTA FE	59	4	38	178		19	11	2	311
BERNALILLO	2		1	1					4
DONA ANA	84	10	92	207	4	40	18	2	457
GUADALUPE	1			1					2
MORA				1					1
SAN MIGUEL	12		11	8		3			34
LEA	15	1	35	220		10	4		285
GRANT	9		18	17		4	1		49
HIDALGO	2		3	1					6
LUNA	7		11	4		2			24
SIERRA	3	1	3	12			2		21
CATRON			1						1
SOCORRO	8		18	11			2		39
TORRANCE	2		4	8		2			16
COLFAX	7	1	3	36		3	2		52
UNION	2			9		1			12
TAOS	23	1	14	92		5	3		138
CURRY	30	1	71	172		14	6	1	295
ROOSEVELT	5	1	3	16		1	3		29
QUAY	8	1	13	11			1		34
MCKINLEY	20		120	101	31	16			288
SAN JUAN	49		82	71	12	23	6		243
LINCOLN	3	1	4	7		2	2		19
OTERO	13		11	48		13	8	1	94
CIBOLA	11	2	19	28		3	2		65
SANDOVAL	30	3	31	89	1	13	3	1	171
VALENCIA	21	3	18	28		8	7	1	86
CHAVES	22		28	38		8		1	97
EDDY	15		11	19		3	1		49
Total	486	31	674	1502	49	197	85	11	3035

Source: FY07 RAI Intakes

Percentage of Low and Medium Scores Overridden into Detention, by Gender, by County

Percentage of Low Scores Overridden into Detention (FY07)					
County	Female		Male		Total
	#	%	#	%	
RIO ARRIBA	1	9.1%	10	90.9%	11
SANTA FE	12	31.6%	17	44.7%	38
BERNALILLO			1	100.0%	1
DONA ANA	17	18.5%	72	78.3%	92
SAN MIGUEL	3	27.3%	8	72.7%	11
LEA	6	17.1%	27	77.1%	35
GRANT	5	27.8%	11	61.1%	18
HIDALGO			3	100.0%	3
LUNA	5	45.5%	4	36.4%	11
SIERRA	2	66.7%	1	33.3%	3
CATRON			1	100.0%	1
SOCORRO	7	38.9%	11	61.1%	18
TORRANCE			2	50.0%	4
COLFAX	1	33.3%	2	66.7%	3
TAOS	3	21.4%	8	57.1%	14
CURRY	22	31.0%	45	63.4%	71
ROOSEVELT	2	66.7%	1	33.3%	3
QUAY	1	7.7%	11	84.6%	13
MCKINLEY	29	24.2%	74	61.7%	120
SAN JUAN	20	24.4%	60	73.2%	82
LINCOLN	2	50.0%	2	50.0%	4
OTERO	4	36.4%	7	63.6%	11
CIBOLA	8	42.1%	9	47.4%	19
SANDOVAL	5	16.1%	23	74.2%	31
VALENCIA	3	16.7%	14	77.8%	18
CHAVES	8	28.6%	19	67.9%	28
EDDY	1	9.1%	8	72.7%	11
Total	167	24.8%	451	66.9%	674

Percentage of Medium Scores Overridden into Detention (FY07)					
County	Female		Male		Total
	#	%	#	%	
RIO ARRIBA			4	100.0%	4
SANTA FE	4	21.1%	12	63.2%	19
DONA ANA	3	7.5%	36	90.0%	40
SAN MIGUEL			2	66.7%	3
LEA			10	100.0%	10
GRANT	1	25.0%	3	75.0%	4
LUNA	1	50.0%	1	50.0%	2
TORRANCE			2	100.0%	2
COLFAX	1	33.3%	2	66.7%	3
TAOS	2	40.0%	3	60.0%	5
CURRY	4	28.6%	10	71.4%	14
ROOSEVELT			1	100.0%	1
MCKINLEY	4	25.0%	10	62.5%	16
SAN JUAN	6	26.1%	15	65.2%	23
LINCOLN			2	100.0%	2
OTERO	5	38.5%	8	61.5%	13
CIBOLA			3	100.0%	3
SANDOVAL	4	30.8%	8	61.5%	13
VALENCIA	2	25.0%	6	75.0%	8
CHAVES	1	12.5%	7	87.5%	8
EDDY			3	100.0%	3
UNION			1	100.0%	1
Total	38	19.3%	149	75.6%	197

¹⁰A chart for high scores overridden in detention was not included because individuals with high scores do not fall in this category.

Source: FY07 RAI Intakes

¹⁰ Note that in both of the charts above counts when summed may not add to the total because and individuals with missing gender were not included. 8.3% of the low scores and 5.1% of the medium, overridden into detention, had clients with missing genders.

Percentage of Low Scores Overridden into Detention, by Ethnicity, by County

Percentage of Low Scores Overridden into Detention FY07													
Referral County	2 or more		AI or AN		B or AA		Hispanic		NH or PI		White		Total
	#	%	#	%	#	%	#	%	#	%	#	%	
RIO ARRIBA							11	100.0%					11
SANTA FE			1	2.6%	1	2.6%	20	52.6%	1	2.6%	5	13.2%	38
BERNALILLO							1	100.0%					1
DONA ANA	4	4.3%			1	1.1%	72	78.3%			12	13.0%	92
SAN MIGUEL					1	9.1%	10	90.9%					11
LEA	1	2.9%			3	8.6%	16	45.7%			13	37.1%	35
GRANT							12	66.7%			4	22.2%	18
HIDALGO							3	100.0%					3
LUNA							5	45.5%			4	36.4%	11
SIERRA							2	66.7%					3
CATRON											1	100.0%	1
SOCORRO							15	83.3%			3	16.7%	18
TORRANCE							1	25.0%			1	25.0%	4
COLFAX							3	100.0%					3
TAOS							11	78.6%					14
CURRY					10	14.1%	36	50.7%			21	29.6%	71
ROOSEVELT							2	66.7%			1	33.3%	3
QUAY					2	15.4%	7	53.8%			3	23.1%	13
MCKINLEY			72	60.0%	3	2.5%	21	17.5%			6	5.0%	120
SAN JUAN	1	1.2%	32	39.0%			23	28.0%			20	24.4%	82
LINCOLN							2	50.0%			2	50.0%	4
OTERO							8	72.7%			3	27.3%	11
CIBOLA			7	36.8%			7	36.8%			3	15.8%	19
SANDOVAL	2	6.5%					14	45.2%			11	35.5%	31
VALENCIA							13	72.2%			4	22.2%	18
CHAVES					2	7.1%	15	53.6%			10	35.7%	28
EDDY							6	54.5%			3	27.3%	11
Total	8	1.2%	112	16.6%	23	3.4%	336	49.9%	1	0.1%	130	19.3%	674

AI or AN - American Indian/Alaskan Native, B or AA- Black or African American, NH or PI - Native Hawaiian/Pacific Islander

¹¹McKinley had the highest number of individuals with low scores that were overridden into detention. This County made up approximately 17.8% of the total.

Source: FY07 RAI Intakes

¹¹ Counts for individuals with missing ethnicities were not included in the chart above. The individuals in this category statewide accounted for 9.5% of the total.

Percentage of Medium Scores Overridden into Detention, by Ethnicity, by County

Percentage of Medium Scores Overridden into Detention (FY07)											
County	2 or more		AI or AN		B or AA		Hispanic		White		Total
	#	%	#	%	#	%	#	%	#	%	
RIO ARRIBA							4	100.0%			4
SANTA FE			2	10.5%			14	73.7%			19
DONA ANA					1	2.5%	33	82.5%	5	12.5%	40
SAN MIGUEL							2	66.7%			3
LEA							9	90.0%	1	10.0%	10
GRANT							3	75.0%	1	25.0%	4
LUNA							2	100.0%			2
TORRANCE	1	50.0%							1	50.0%	2
COLFAX							3	100.0%			3
TAOS							5	100.0%			5
CURRY	1	7.1%			2	14.3%	8	57.1%	3	21.4%	14
ROOSEVELT					1	100.0%					1
MCKINLEY	1	6.3%	6	37.5%	1	6.3%	3	18.8%	1	6.3%	16
SAN JUAN	1	4.3%	12	52.2%			3	13.0%	4	17.4%	23
LINCOLN			1	50.0%					1	50.0%	2
OTERO			1	7.7%	2	15.4%	6	46.2%	4	30.8%	13
CIBOLA			2	66.7%			1	33.3%			3
SANDOVAL			1	7.7%	2	15.4%	1	7.7%	7	53.8%	13
VALENCIA							7	87.5%	1	12.5%	8
CHAVES							5	62.5%	3	37.5%	8
EDDY							1	33.3%	2	66.7%	3
UNION									1	100.0%	1
	4	2.0%	25	12.7%	9	4.6%	110	55.8%	35	17.8%	197

AI or AN - American Indian or Alaskan Native, B or AA - Black or African American

¹²In FY07 Dona Ana had the highest number of clients with medium scores that were overridden into detention. Dona Ana accounted for 20.3% of the total.

Source: FY07 RAI Intakes

¹²Counts for individuals with missing ethnicities were not included in the chart above. Statewide individuals with medium scores overridden into detention, who did not have an ethnicity listed, accounted for 7.1% of the total.

Percentage of Low Scores Overridden into Detention, by Reason, by County

Percentage of Low Scores Overridden into Detention by Reason (FY07)									
County	Delinquent offense		Delinquent offense + VOP, VCO or other violation		Probation/Parole Violation (with warrant)		Violation of court order/condition of release		Total
	#	%	#	%	#	%	#	%	
RIO ARRIBA	7	63.6%	1	9.1%	1	9.1%	2	18.2%	11
SANTA FE	25	65.8%	9	23.7%	1	2.6%	3	7.9%	38
BERNALILLO	1	100.0%							1
DONA ANA	66	71.7%	20	21.7%	1	1.1%	5	5.4%	92
SAN MIGUEL	7	63.6%	1	9.1%	2	18.2%	1	9.1%	11
LEA	21	60.0%	2	5.7%	11	31.4%	1	2.9%	35
GRANT	15	83.3%	3	16.7%					18
HIDALGO	2	66.7%	1	33.3%					3
LLUNA	7	63.6%	2	18.2%			2	18.2%	11
SIERRA	2	66.7%			1	33.3%			3
CATRON	1	100.0%							1
SOCORRO	13	72.2%	3	16.7%			2	11.1%	18
TORRANCE	3	75.0%	1	25.0%					4
COLFAX			1	33.3%	1	33.3%	1	33.3%	3
TAOS	13	92.9%					1	7.1%	14
CURRY	51	71.8%	11	15.5%	6	8.5%	3	4.2%	71
ROOSEVELT	1	33.3%	1	33.3%			1	33.3%	3
QUAY	12	92.3%	1	7.7%					13
MCKINLEY	109	90.8%	11	9.2%					120
SAN JUAN	50	61.0%	13	15.9%	5	6.1%	14	17.1%	82
LINCOLN	1	25.0%	2	50.0%	1	25.0%			4
OTERO	7	63.6%	4	36.4%					11
CIBOLA	18	94.7%					1	5.3%	19
SANDOVAL	27	87.1%	3	9.7%	1	3.2%			31
VALENCIA	16	88.9%			1	5.6%	1	5.6%	18
CHAVES	21	75.0%	5	17.9%			1	3.6%	28
EDDY	10	90.9%	1	9.1%					11
Total	506	75.1%	96	14.2%	32	4.7%	39	5.8%	674

Source: FY07 RAI Intakes

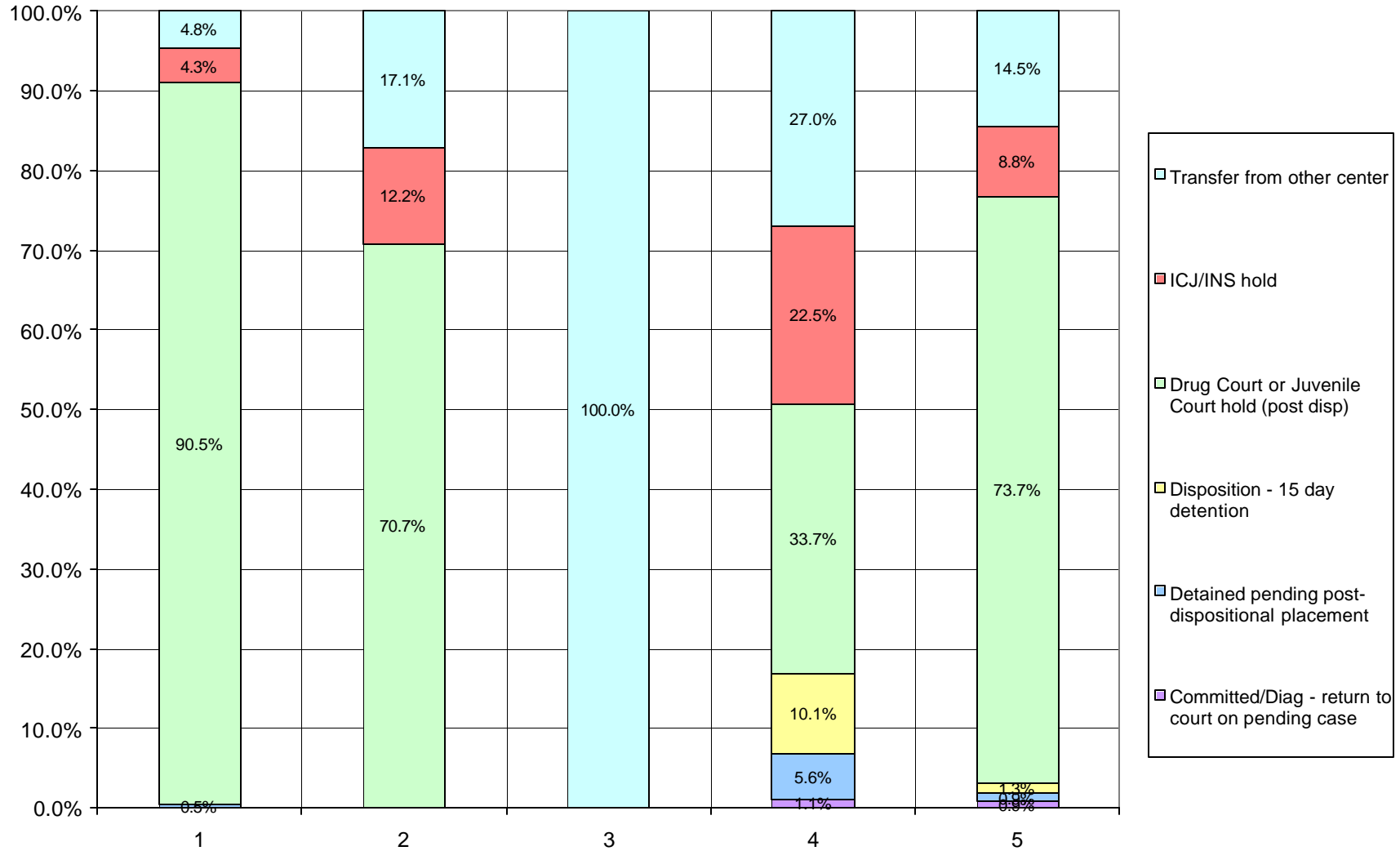
Percentage of Medium Scores Overridden into Detention, by Reason, by County

Percentage of Medium Scores Overridden into Detention by Reason (FY07)									
County	Delinquent offense		Delinquent offense + VOP, VCO or other violation		Probation/Parole Violation (with warrant)		Violation of court order/condition of release		Total
	#	%	#	%	#	%	#	%	
RIO ARRIBA	2	50.0%	2	50.0%					4
SANTA FE	14	73.7%	5	26.3%					19
DONA ANA	27	67.5%	13	32.5%					40
SAN MIGUEL	2	66.7%	1	33.3%					3
LEA	8	80.0%	2	20.0%					10
GRANT	4	100.0%							4
LUNA	2	100.0%							2
TORRANCE	1	50.0%			1	50.0%			2
COLFAX	2	66.7%	1	33.3%					3
TAOS	3	60.0%	2	40.0%					5
CURRY	11	78.6%	3	21.4%					14
ROOSEVELT	1	100.0%							1
MCKINLEY	14	87.5%	2	12.5%					16
SAN JUAN	17	73.9%	5	21.7%			1	4.3%	23
LINCOLN	1	50.0%	1	50.0%					2
OTERO	9	69.2%	2	15.4%			2	15.4%	13
CIBOLA	3	100.0%							3
SANDOVAL	10	76.9%	3	23.1%					13
VALENCIA	7	87.5%	1	12.5%					8
CHAVES	5	62.5%	2	25.0%			1	12.5%	8
EDDY	2	66.7%	1	33.3%					3
UNION	1	100.0%							1
Total	146	74.1%	46	23.4%	1	0.5%	4	2.0%	197

Source: FY07 RAI Intakes

Percentage of Reason for Referral, by Warrant (Court Ordered Holds), by Region

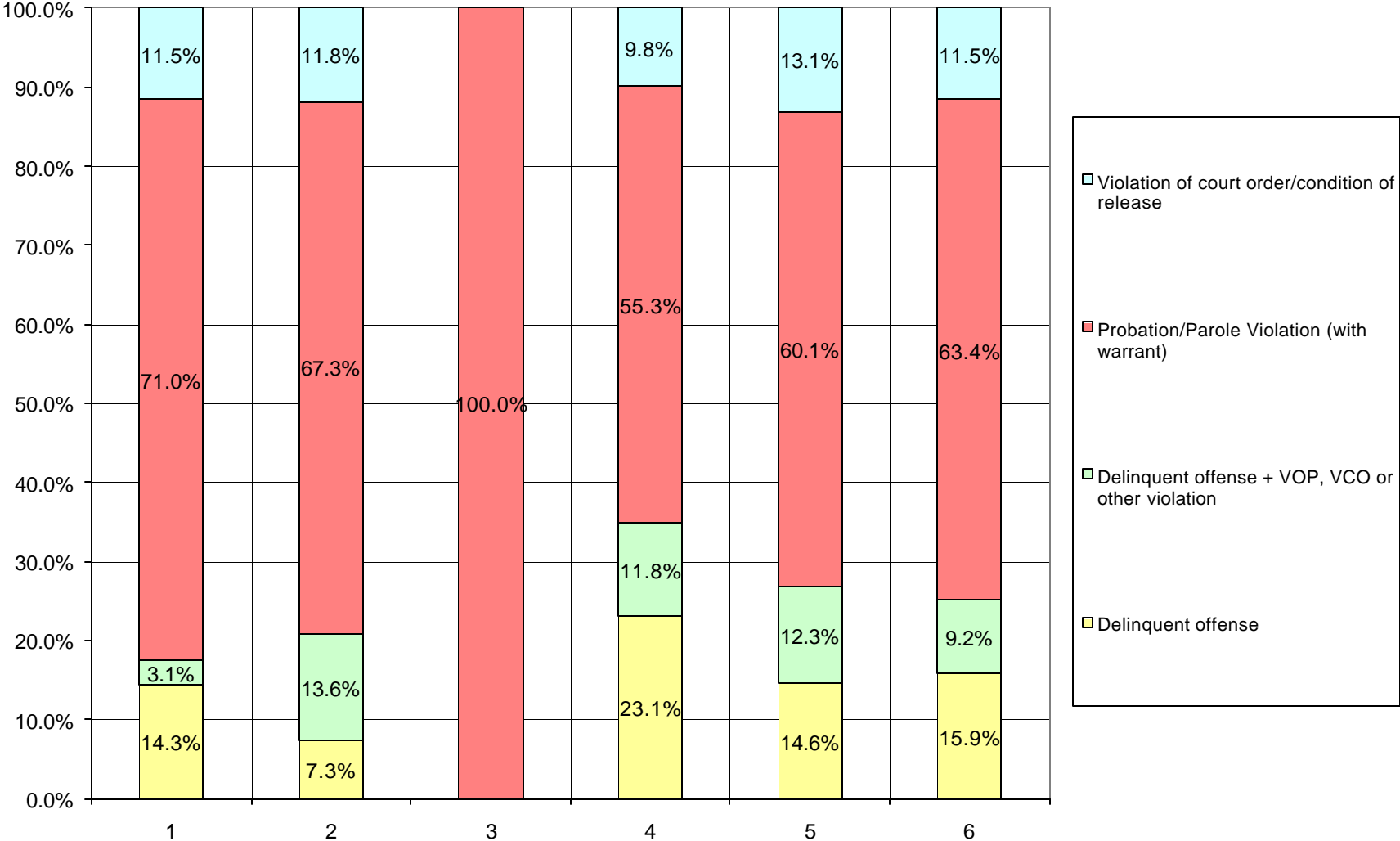
Percentage of Reason for Referral by Court Ordered Holds FY07



Source: FY07 RAI Intakes

Percentage of Reason for Referral, by Warrant (Probation Violations), by Region

Percentage of Reason for Referral by Probation Violations FY07



Source: FY07 RAI Intakes